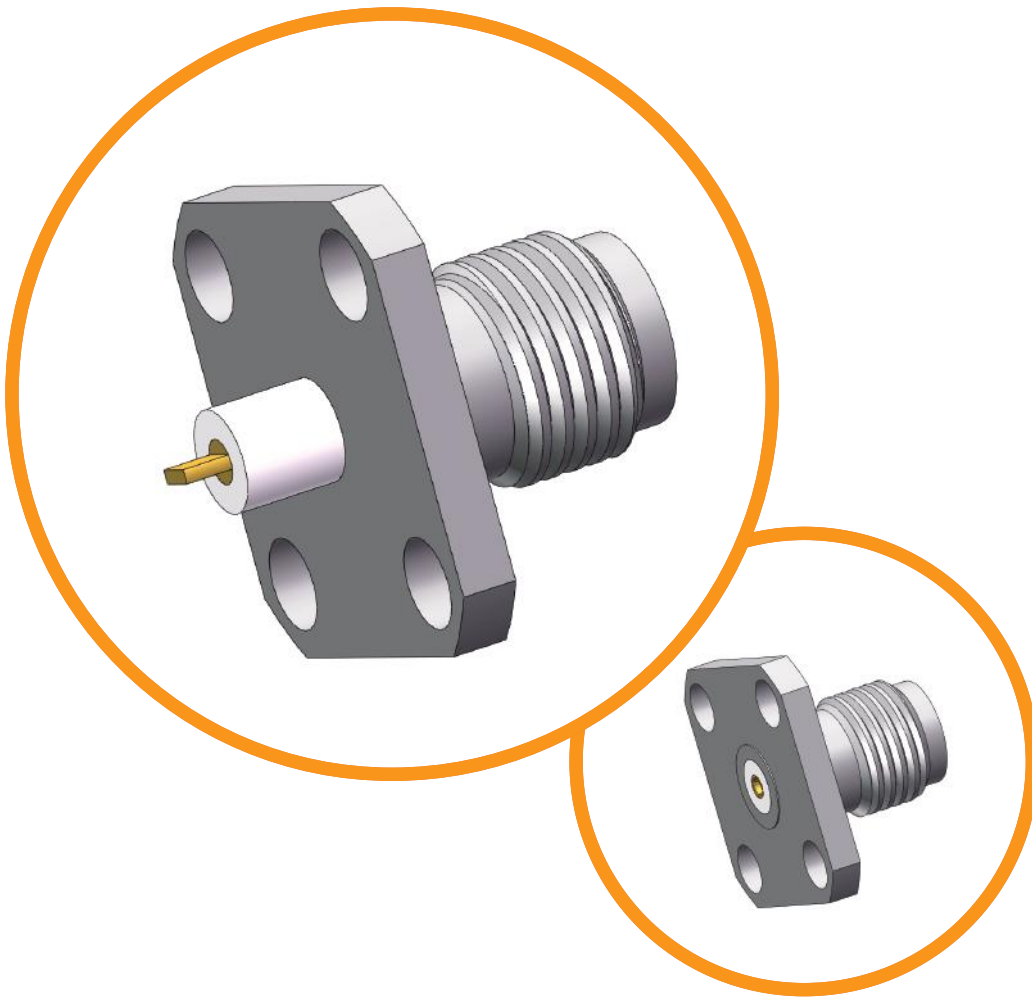


SMA

DC to 18 GHz



Low VSWR

Ultra-low loss

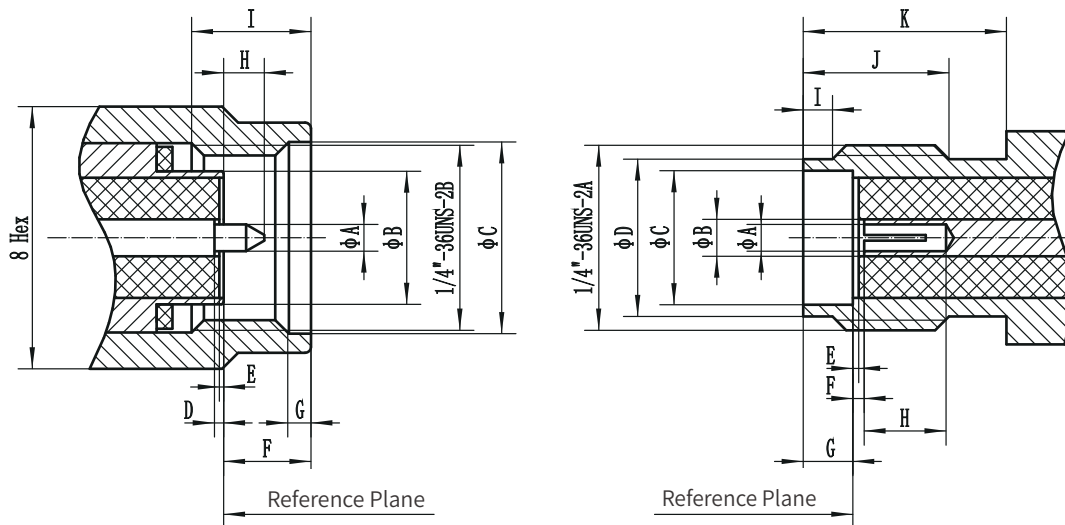
Durable & rugged

Extremely long service life

SMA Connector

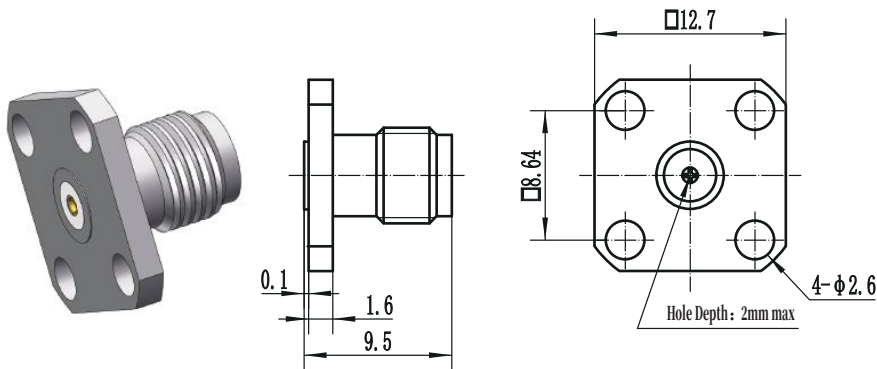
Electrical Data	Impedance	50 Ω
	Frequency Range	DC ~ 18 GHz
	VSWR	1.15 (Typical)
	IL	$\leq 0.06 \sqrt{F(\text{GHz})}$ dB
	Contact Resistance	Center Contact ≤ 3 mΩ Outer Contact ≤ 2 mΩ
	Insulation Resistance	≥ 5000 MΩ
	Dielectric Withstanding Voltage	≥ 500 Vrms
	Environmental Data	Temperature Range
Material / Plating	Bodies, Outer Contacts	Stainless Steel / Passivated; Brass / Gold, Nickel
	Center Contacts	Beryllium Copper, Brass / Gold
	Insulators	PTFE

Interface Dimensions

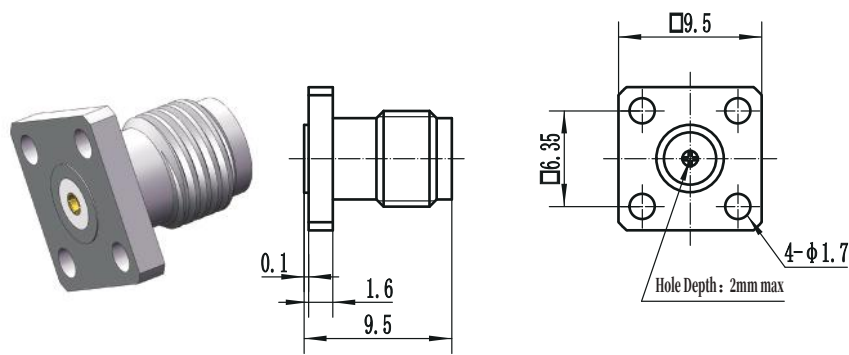


Plug (male)		
	Min (mm)	Max (mm)
A	0.902	0.94
B	-	4.592
C	6.35	-
D	0.00	0.25
E	0.00	0.25
F	-	3.43
G	0.38	1.14
H	-	2.54
I	3.30	-

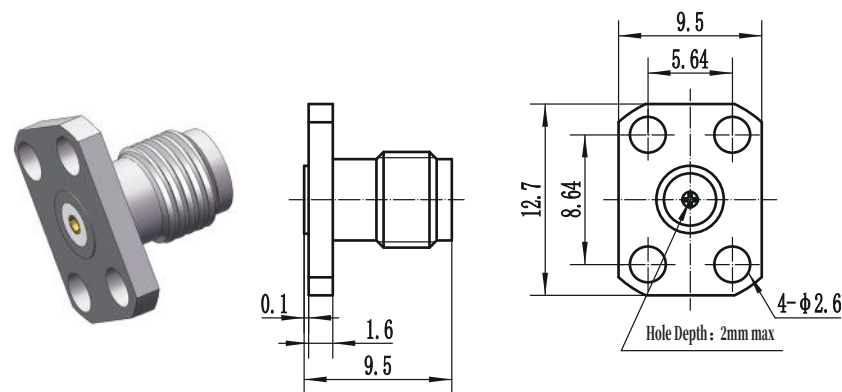
Jack (female)		
	Min (mm)	Max (mm)
A	0.902	0.94
B	1.24	1.30
C	4.597	-
D	5.28	5.49
E	0.00	0.25
F	0.00	0.25
G	1.88	1.98
H	2.67	-
I	0.38	1.14
J	4.32	-
K	5.54	-



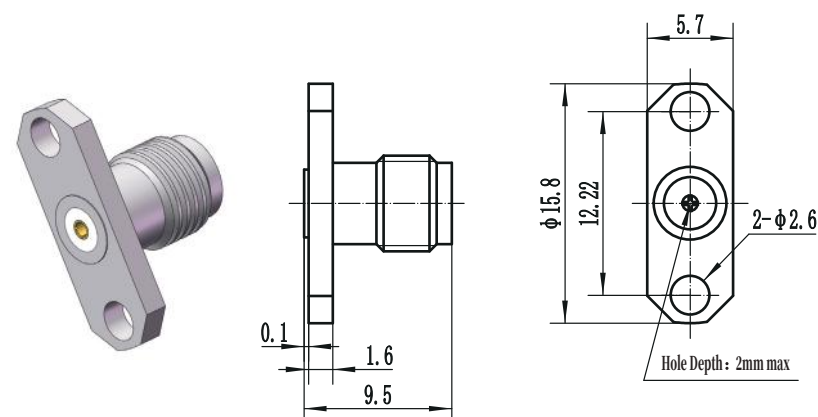
Accepts PIN DIA.	Model No.
Φ0.23mm	SMA-KFD1
Φ0.30mm	SMA-KFD2
Φ0.38mm	SMA-KFD3
Φ0.46mm	SMA-KFD4
Φ0.51mm	SMA-KFD5
Φ0.90mm	SMA-KFD6



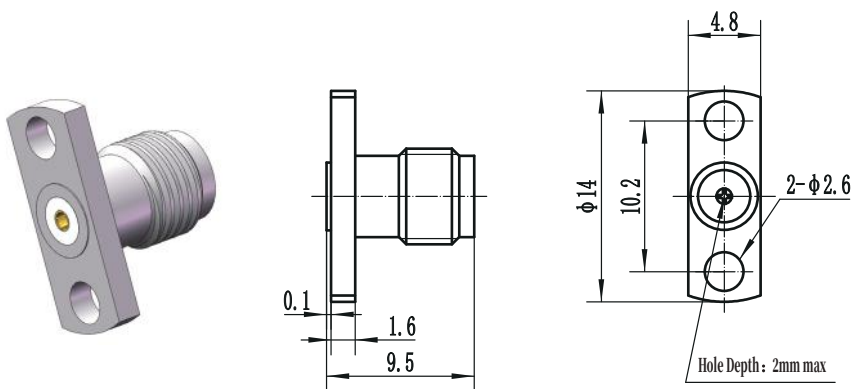
Accepts PIN DIA.	Model No.
Φ0.23mm	SMA-KFD7
Φ0.30mm	SMA-KFD8
Φ0.38mm	SMA-KFD9
Φ0.46mm	SMA-KFD10
Φ0.51mm	SMA-KFD11
Φ0.90mm	SMA-KFD12



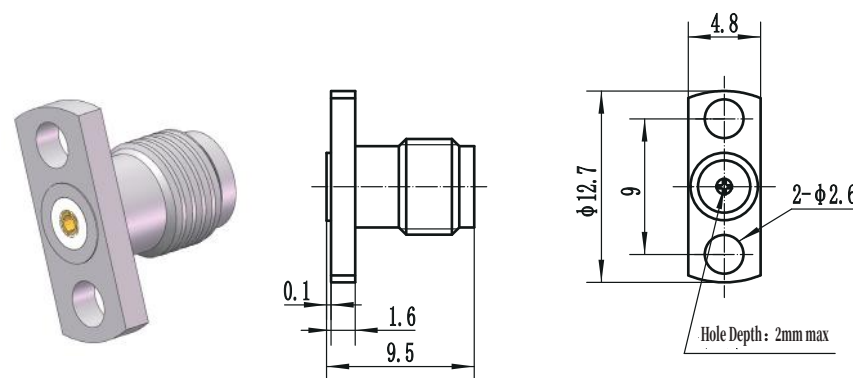
Accepts PIN DIA.	Model No.
Φ0.23mm	SMA-KFD13
Φ0.30mm	SMA-KFD14
Φ0.38mm	SMA-KFD15
Φ0.46mm	SMA-KFD16
Φ0.51mm	SMA-KFD17
Φ0.90mm	SMA-KFD18



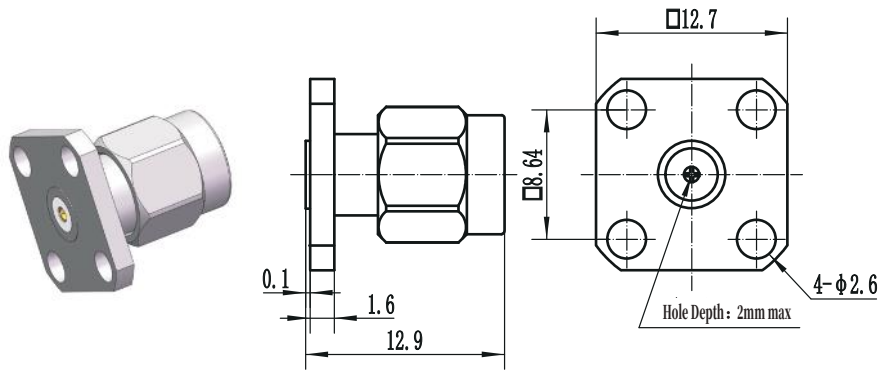
Accepts PIN DIA.	Model No.
Φ0.23mm	SMA-KFD19
Φ0.30mm	SMA-KFD20
Φ0.38mm	SMA-KFD21
Φ0.46mm	SMA-KFD22
Φ0.51mm	SMA-KFD23
Φ0.90mm	SMA-KFD24



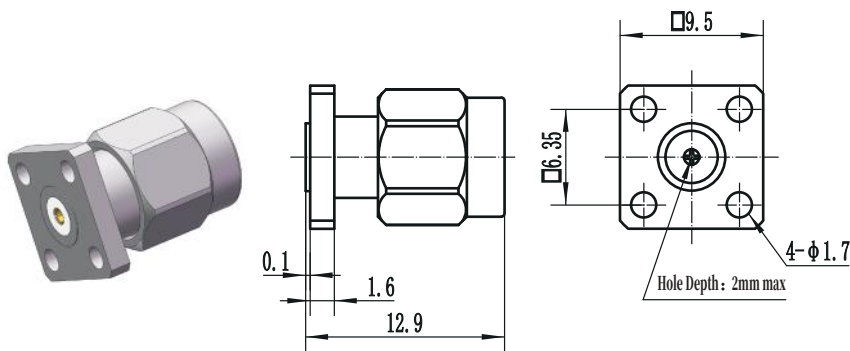
Accepts PIN DIA.	Model No.
Φ0.23mm	SMA-KFD25
Φ0.30mm	SMA-KFD26
Φ0.38mm	SMA-KFD27
Φ0.46mm	SMA-KFD28
Φ0.51mm	SMA-KFD29
Φ0.90mm	SMA-KFD30



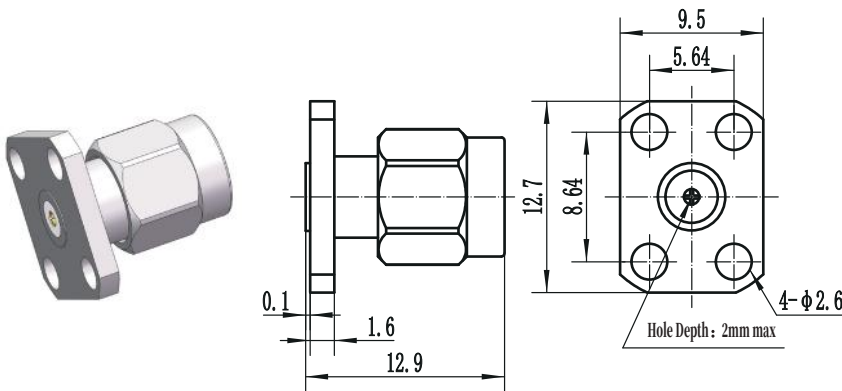
Accepts PIN DIA.	Model No.
Φ0.23mm	SMA-KFD31
Φ0.30mm	SMA-KFD32
Φ0.38mm	SMA-KFD33
Φ0.46mm	SMA-KFD34
Φ0.51mm	SMA-KFD35
Φ0.90mm	SMA-KFD36



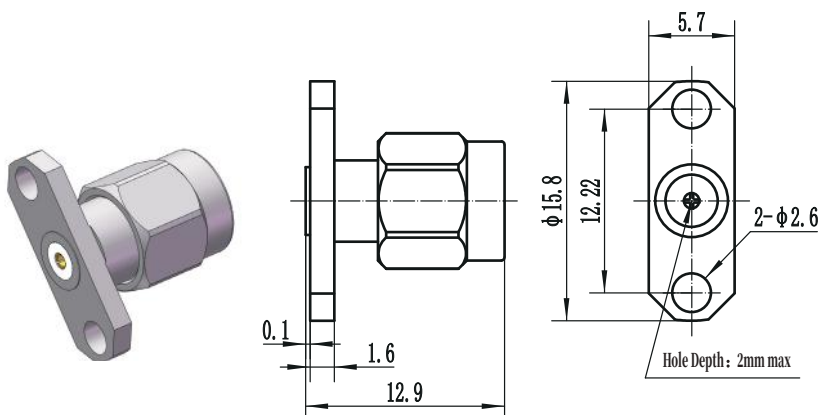
Accepts PIN DIA.	Model No.
Φ0.23mm	SMA-JFD1
Φ0.30mm	SMA-JFD2
Φ0.38mm	SMA-JFD3
Φ0.46mm	SMA-JFD4
Φ0.51mm	SMA-JFD5
Φ0.90mm	SMA-JFD6



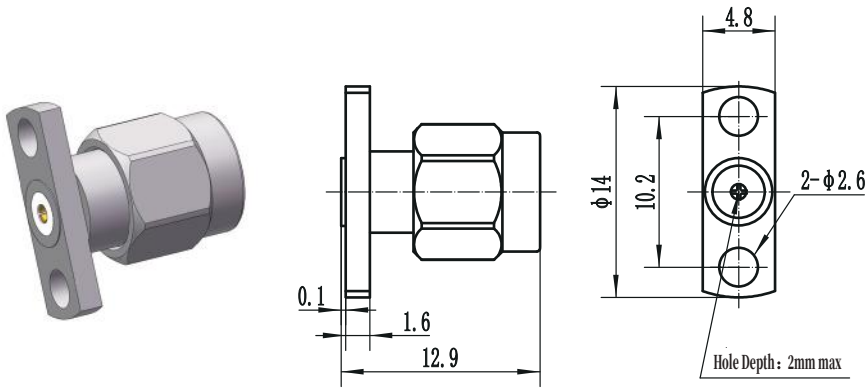
Accepts PIN DIA.	Model No.
Φ0.23mm	SMA-JFD7
Φ0.30mm	SMA-JFD8
Φ0.38mm	SMA-JFD9
Φ0.46mm	SMA-JFD10
Φ0.51mm	SMA-JFD11
Φ0.90mm	SMA-JFD12



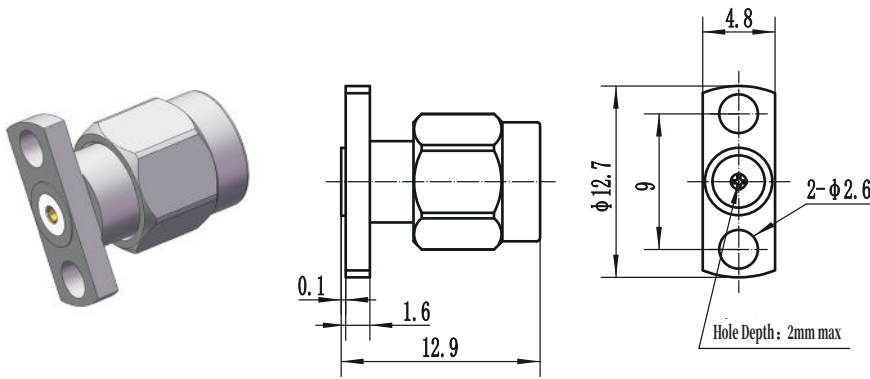
Accepts PIN DIA.	Model No.
Φ0.23mm	SMA-JFD13
Φ0.30mm	SMA-JFD14
Φ0.38mm	SMA-JFD15
Φ0.46mm	SMA-JFD16
Φ0.51mm	SMA-JFD17
Φ0.90mm	SMA-JFD18



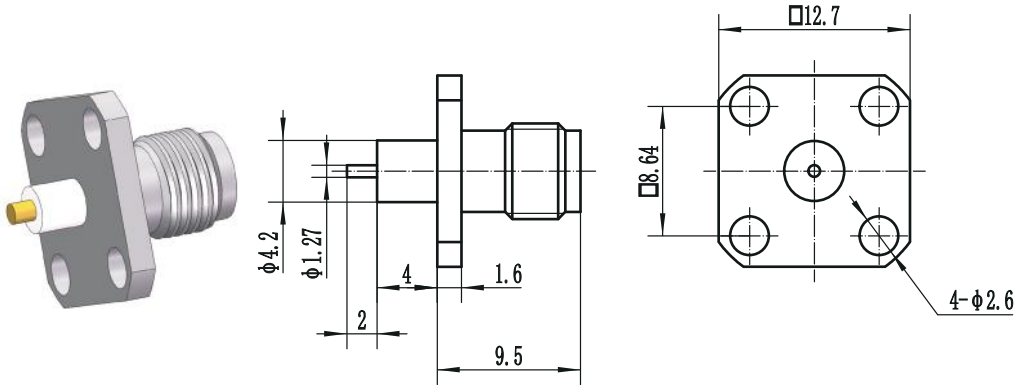
Accepts PIN DIA.	Model No.
Φ0.23mm	SMA-JFD19
Φ0.30mm	SMA-JFD20
Φ0.38mm	SMA-JFD21
Φ0.46mm	SMA-JFD22
Φ0.51mm	SMA-JFD23
Φ0.90mm	SMA-JFD24



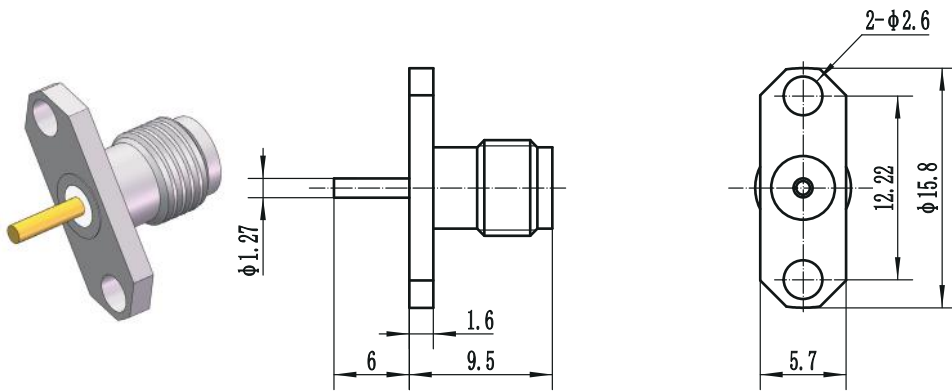
Accepts PIN DIA.	Model No.
Φ0.23mm	SMA-JFD25
Φ0.30mm	SMA-JFD26
Φ0.38mm	SMA-JFD27
Φ0.46mm	SMA-JFD28
Φ0.51mm	SMA-JFD29
Φ0.90mm	SMA-JFD30



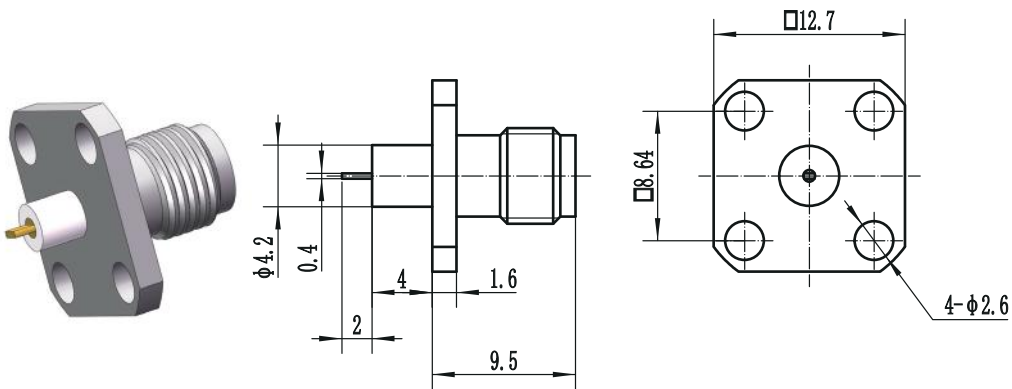
Accepts PIN DIA.	Model No.
Φ0.23mm	SMA-JFD31
Φ0.30mm	SMA-JFD32
Φ0.38mm	SMA-JFD33
Φ0.46mm	SMA-JFD34
Φ0.51mm	SMA-JFD35
Φ0.90mm	SMA-JFD36



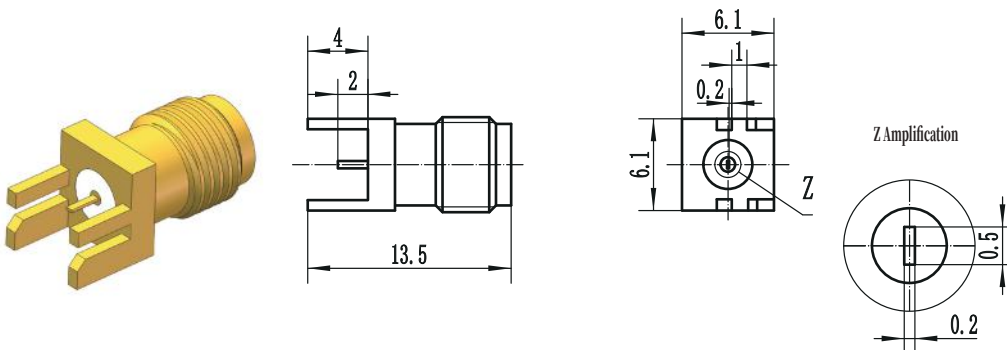
Model No.
SMA-KFD37



Model No.
SMA-KFD38



Model No.
SMA-KFD39



Model No.
SMA-KHD1