

Part Number	Length	Frequency Range	Insertion Loss	VSWR	Impedance
N-JJ1	45.5 mm	18 GHz	≤0.15dB @ 18 GHz	VSWR≤1.09 @ 18 GHz	50 Ω

Electrical, Mechanical and Environmental Characteristics:

- (1) Voltage Withstand: ≥500 V;
- (2) Insulation Resistance: ≥5000 MΩ;
- (3) Durability: ≥500 Times;
- (4) Operating Temperature Range: -55°C ~ +165°C.

Material Type:

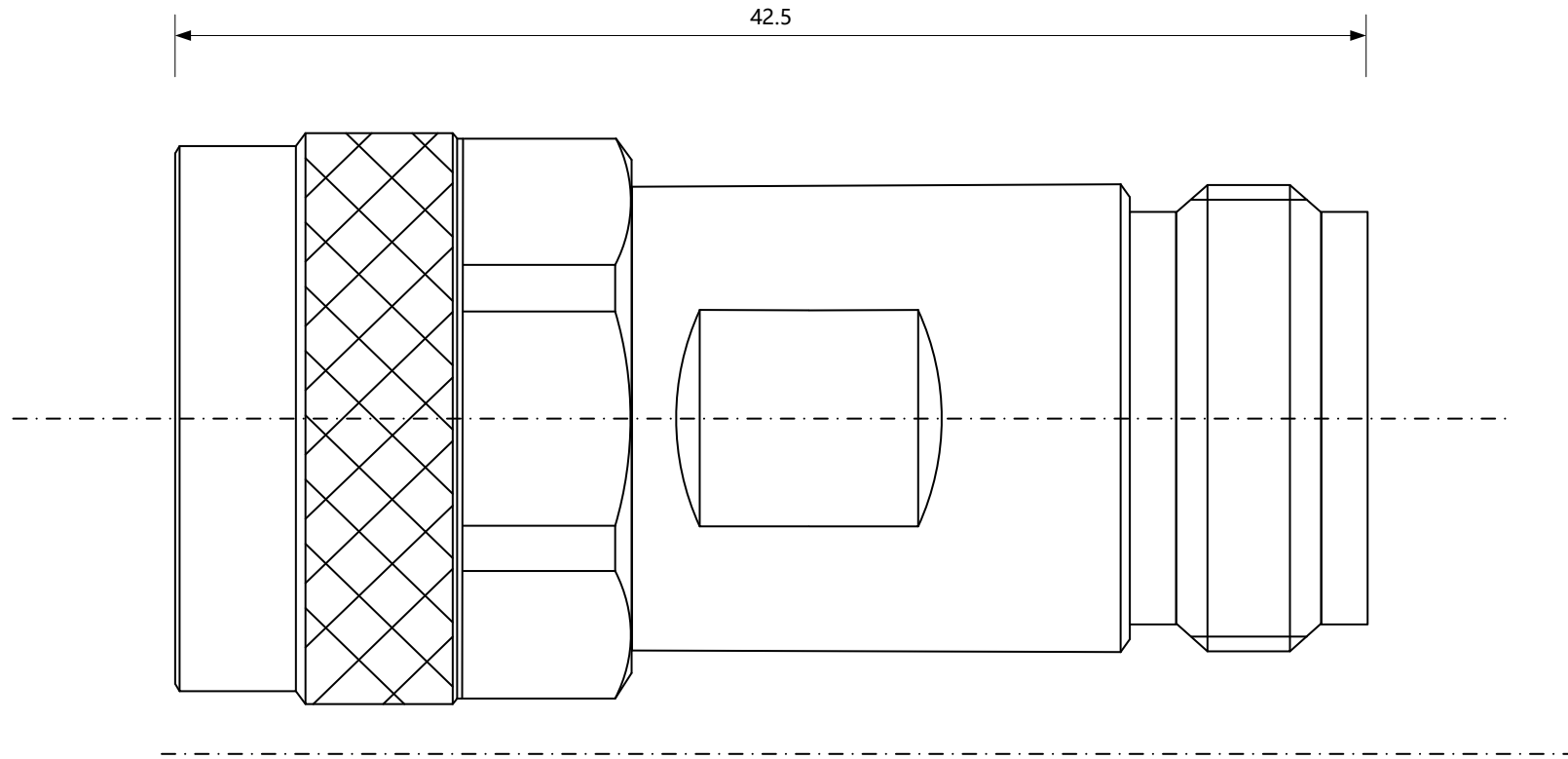
- (1) Inner Conductor: Beryllium Bronze/Gold PLated;
- (2) Insulator: PEI;
- (3) Outer conductor: Stainless Steel/Passivation.

Mechanc (Shanghai) Information Technology Co., Ltd.



www.mechanc.com

sales@mechanc.com



Part Number	Length	Frequency Range	Insertion Loss	VSWR	Impedance
N-JK1	42.5 mm	18 GHz	≤0.15dB @ 18 GHz	VSWR≤1.09 @ 18 GHz	50 Ω

Electrical, Mechanical and Environmental Characteristics:

- (1) Voltage Withstand: ≥500 V;
- (2) Insulation Resistance: ≥5000 MΩ;
- (3) Durability: ≥500 Times;
- (4) Operating Temperature Range: -55°C ~ +165°C.

Material Type:

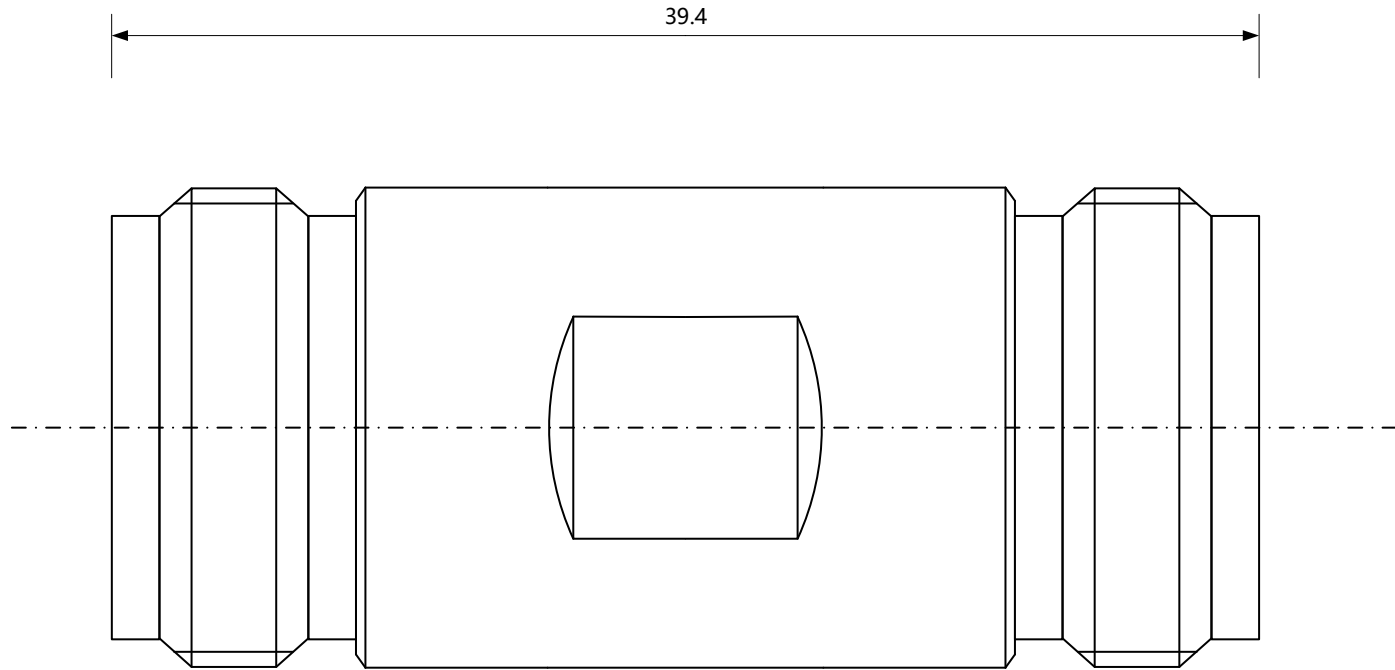
- (1) Inner Conductor: Beryllium Bronze/Gold PLated;
- (2) Insulator: PEI;
- (3) Outer conductor: Stainless Steel/Passivation.

Mechanc (Shanghai) Information Technology Co., Ltd.



www.mechanc.com

sales@mechanc.com



Part Number	Length	Frequency Range	Insertion Loss	VSWR	Impedance
N-KK1	39.4 mm	18 GHz	≤0.15dB @ 18 GHz	VSWR≤1.09 @ 18 GHz	50 Ω

Electrical, Mechanical and Environmental Characteristics:

- (1) Voltage Withstand: ≥500 V;
- (2) Insulation Resistance: ≥5000 MΩ;
- (3) Durability: ≥500 Times;
- (4) Operating Temperature Range: -55°C ~ +165°C.

Material Type:

- (1) Inner Conductor: Beryllium Bronze/Gold PLated;
- (2) Insulator: PEI;
- (3) Outer conductor: Stainless Steel/Passivation.

Mechanc (Shanghai) Information Technology Co., Ltd.



www.mechanc.com

sales@mechanc.com