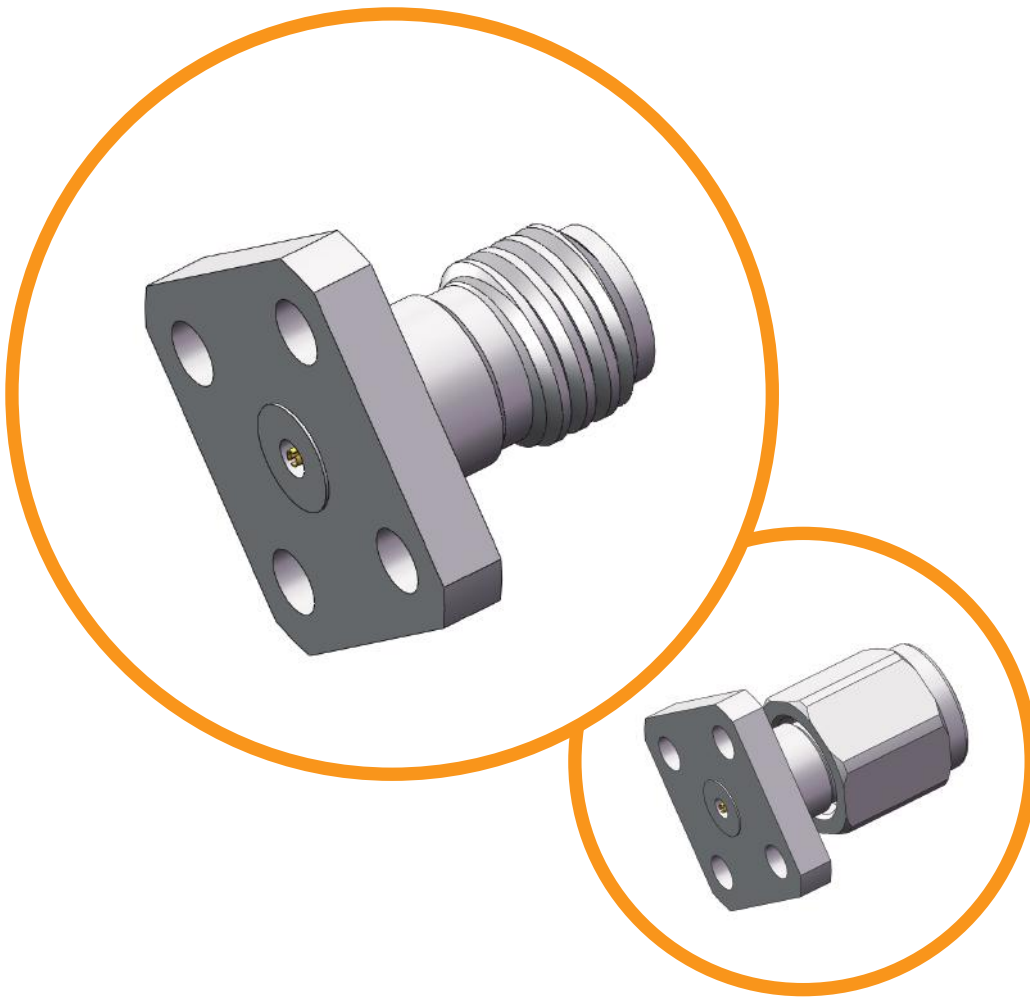


1.0mm DC to 110 GHz



Low VSWR

Ultra-low loss

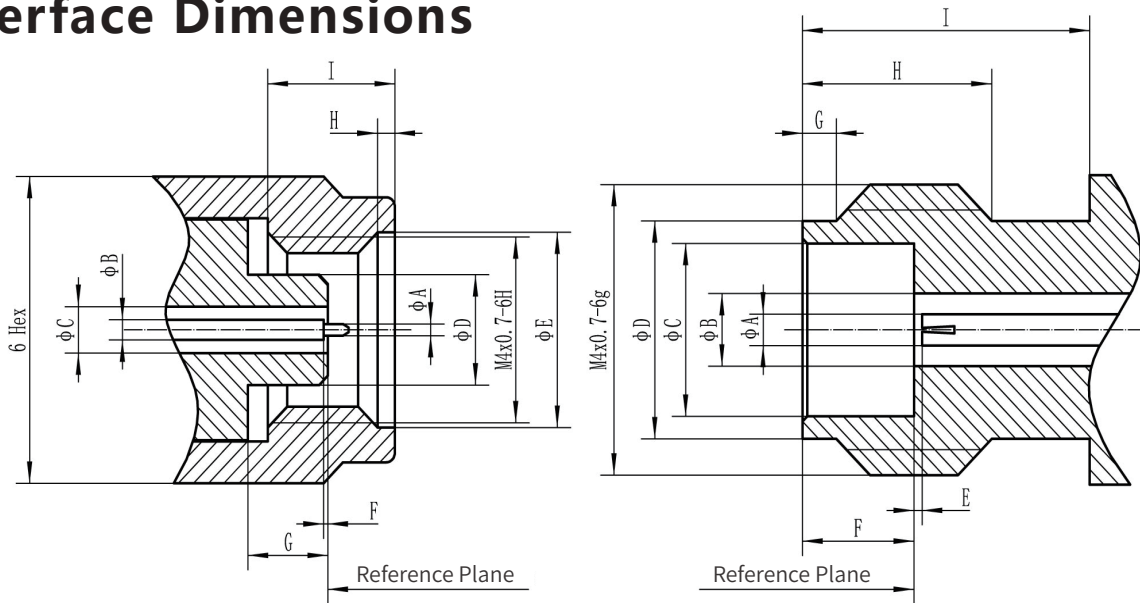
Durable & rugged

Extremely long service life

1.0mm Connector

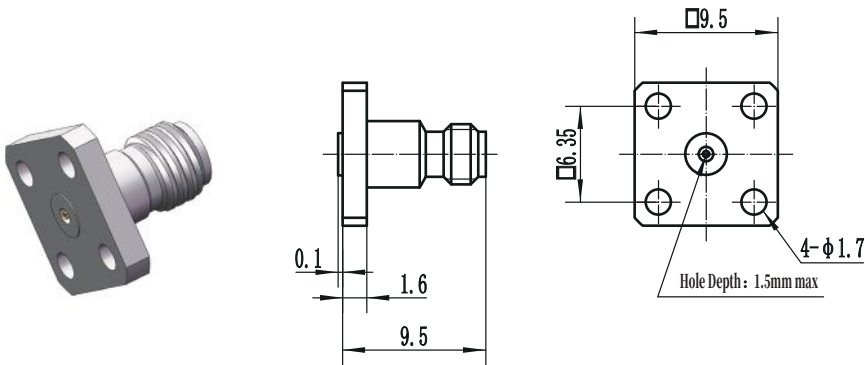
Electrical Data	Impedance	50 Ω	
	Frequency Range	DC ~ 110 GHz	
	VSWR	1.5 (Typical)	
	IL	$\leq 0.06 \sqrt{F(\text{GHz})}$ dB	
	Contact Resistance	Center Contact	≤ 6 m Ω
		Outer Contact	≤ 3 m Ω
	Insulation Resistance	≥ 5000 M Ω	
	Dielectric Withstanding Voltage	≥ 300 Vrms	
Environmental Data	Temperature Range	-55C° ~ +165C°	
Material / Plating	Bodies, Outer Contacts	Stainless Steel/Passivated; Brass /Gold, Nickel	
	Center Contacts	Beryllium Copper, Brass/Gold	
	Insulators	PEI, PTFE	

Interface Dimensions

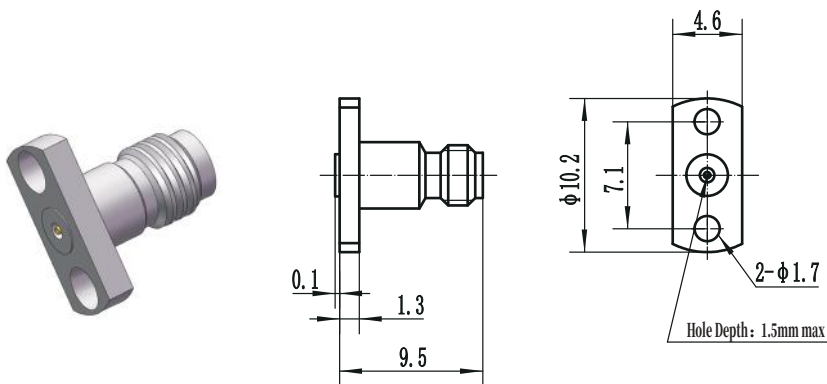


Plug (male)		
	Min (mm)	Max (mm)
A	0.245	0.255
B	0.429	0.439
C	0.995	1.005
D	2.362	2.372
E	4.15	4.25
F	0.000	0.051
G	1.8	1.9
H	0.3	0.5
I	2.84	3.04

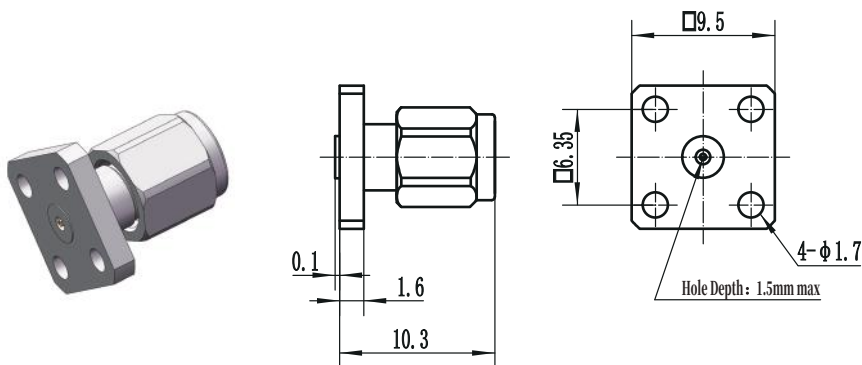
Jack (female)		
	Min (mm)	Max (mm)
A	0.429	0.439
B	0.995	1.005
C	2.38	2.39
D	2.95	3.05
E	0.000	0.051
F	1.6	1.7
G	0.45	0.55
H	2.7	2.9
I	3.75	----



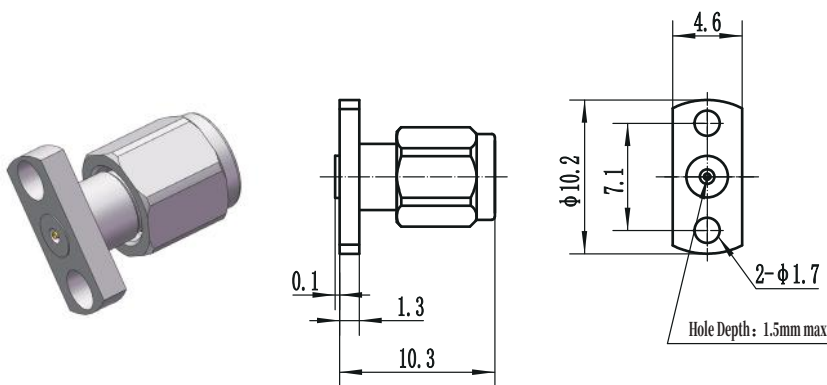
Accepts PIN DIA.	Model No.
Φ0.23mm	1.0-KFD1



Accepts PIN DIA.	Model No.
Φ0.23mm	1.0-KFD2

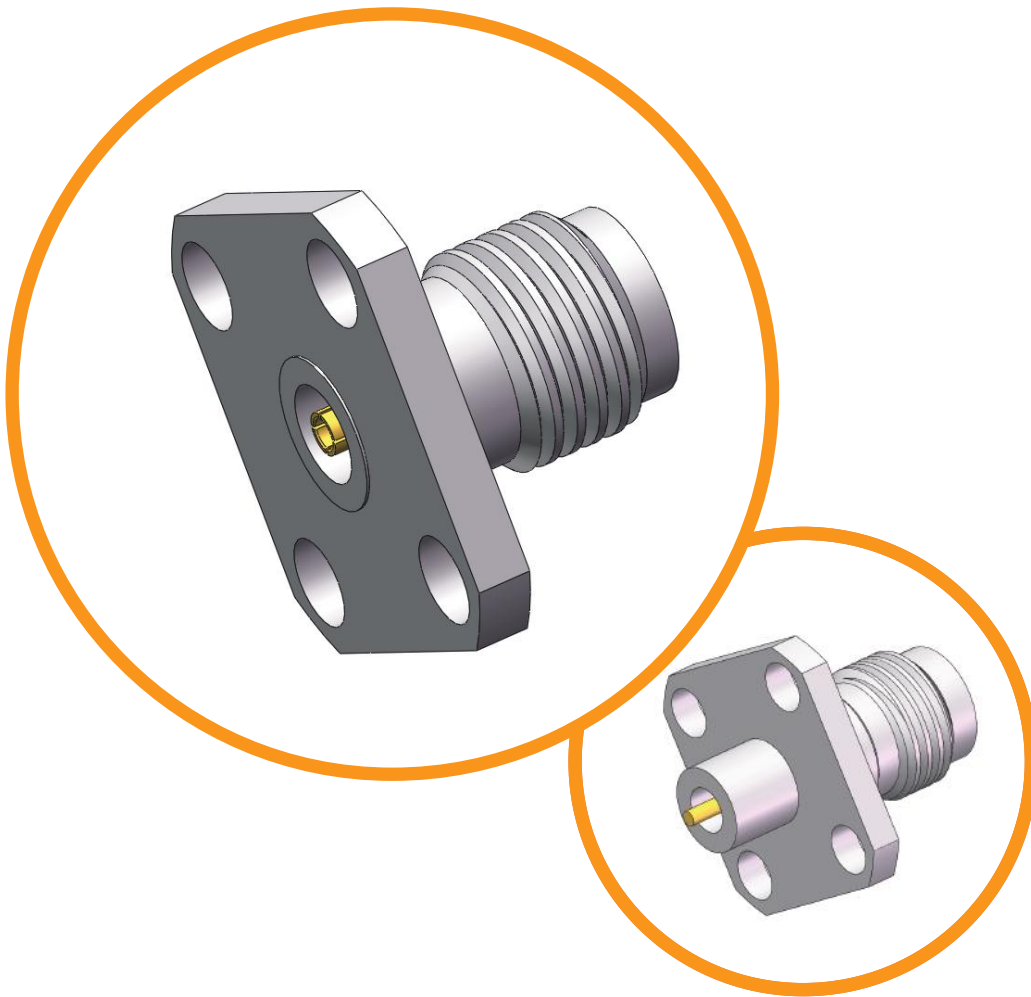


Accepts PIN DIA.	Model No.
Φ0.23mm	1.0-JFD1



Accepts PIN DIA.	Model No.
Φ0.23mm	1.0-JFD2

1.85mm DC to 67 GHz



Low VSWR

Ultra-low loss

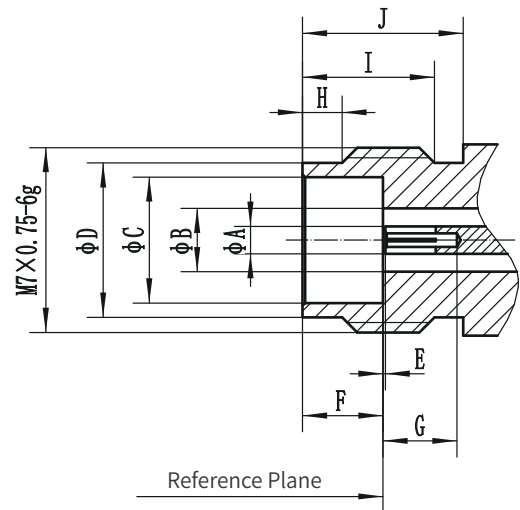
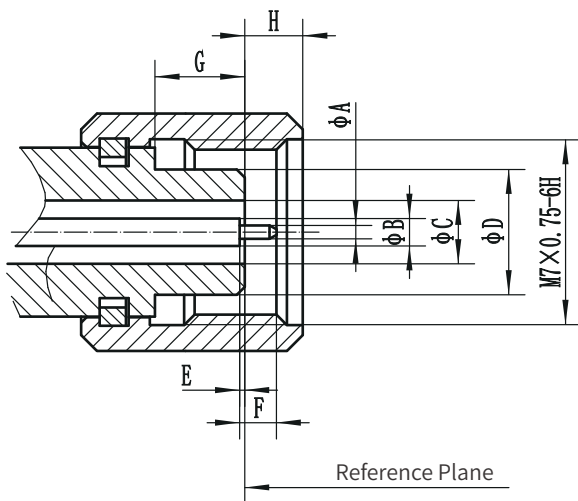
Durable & rugged

Extremely long service life

1.85mm Connector

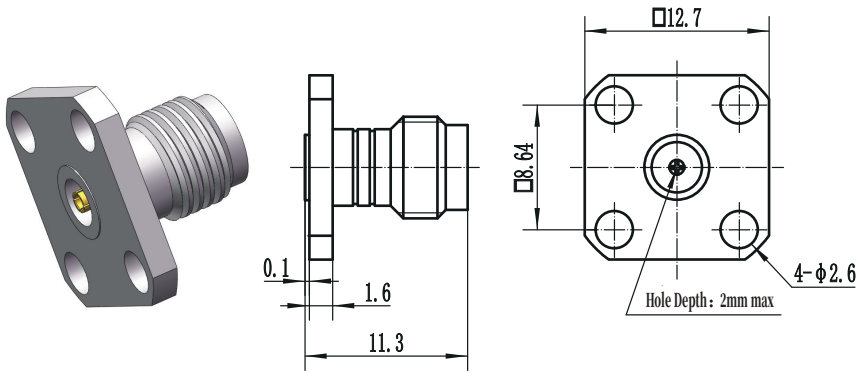
Electrical Data	Impedance	50 Ω	
	Frequency Range	DC ~ 67 GHz	
	VSWR	1.25 (Typical)	
	IL	$\leq 0.06 \sqrt{F(\text{GHz})}$ dB	
	Contact Resistance	Center Contact	≤ 4 mΩ
		Outer Contact	≤ 2 mΩ
	Insulation Resistance	≥ 5000 MΩ	
	Dielectric Withstanding Voltage	≥ 500 Vrms	
Environmental Data	Temperature Range	-55°C ~ + 165°C	
Material / Plating	Bodies, Outer Contacts	Stainless Steel / Passivated; Brass / Gold, Nickel	
	Center Contacts	Beryllium Copper, Brass / Gold	
	Insulators	PEI, PTFE	

Interface Dimensions

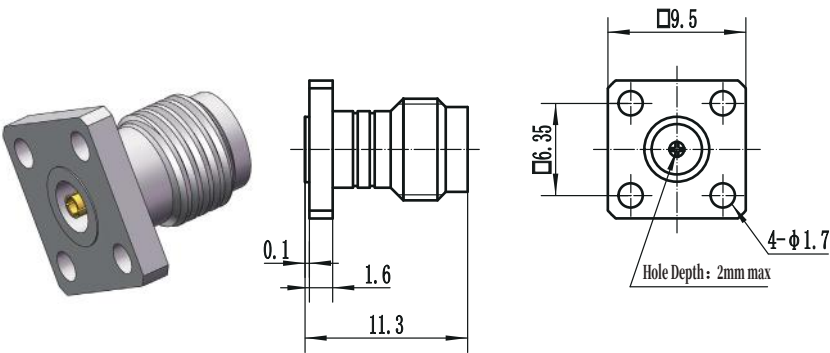


Plug (male)		
	Min (mm)	Max (mm)
A	0.506	0.516
B	0.8016	0.8056
C	1.8475	1.8525
D	4.7475	4.75
E	0.00	0.13
F	1.335	1.445
G	3.38	3.48
H	1.849	2.449

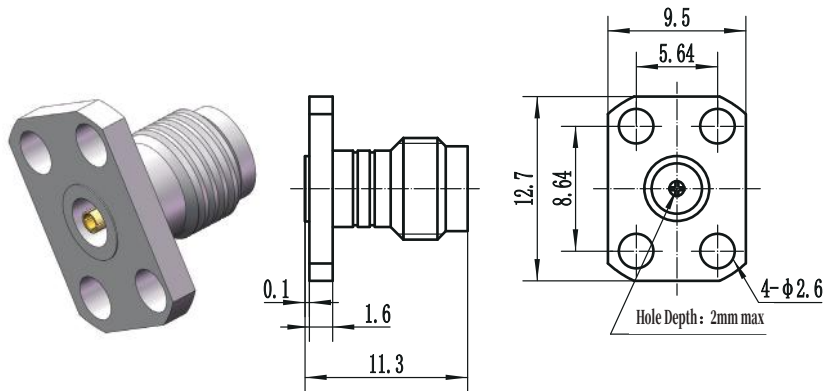
Jack (female)		
	Min (mm)	Max (mm)
A	0.8016	0.8056
B	1.8525	1.8575
C	4.745	4.795
D	5.79	5.89
E	0.00	0.13
F	3.00	3.10
G	2.65	-
H	1.37	1.63
I	4.80	5.06
J	6.00	-



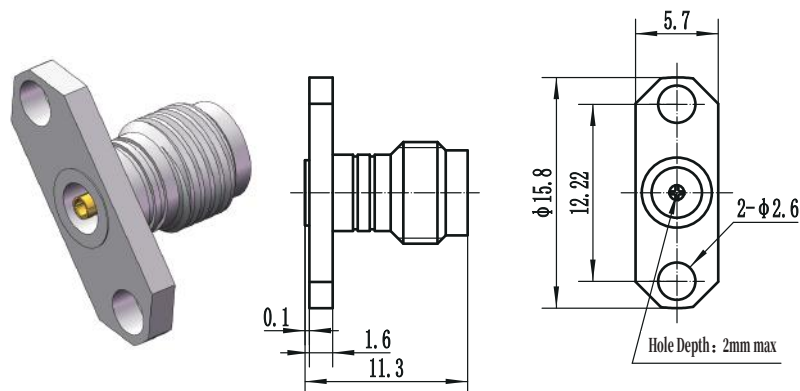
Accepts PIN DIA.	Model No.
Φ0.23mm	1.85-KFD1
Φ0.30mm	1.85-KFD2



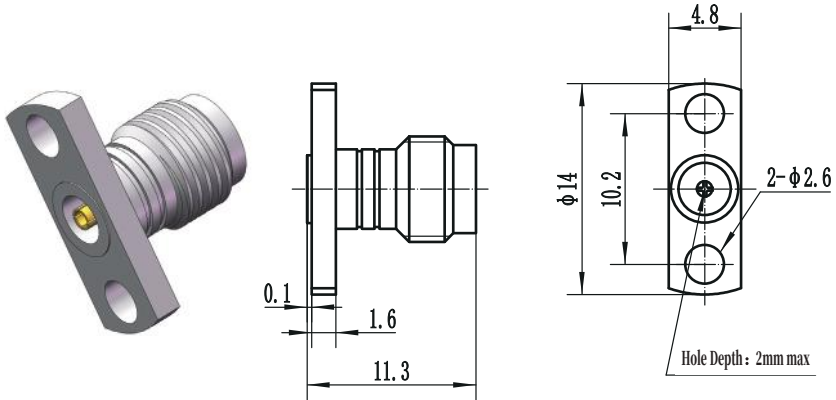
Accepts PIN DIA.	Model No.
Φ0.23mm	1.85-KFD3
Φ0.30mm	1.85-KFD4



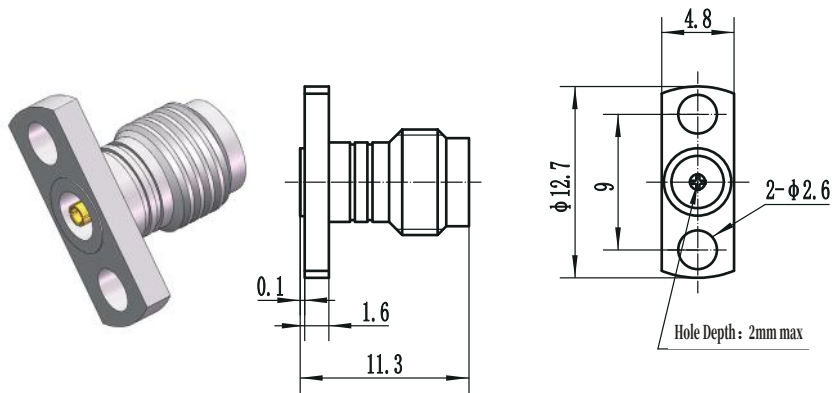
Accepts PIN DIA.	Model No.
Φ0.23mm	1.85-KFD5
Φ0.30mm	1.85-KFD6



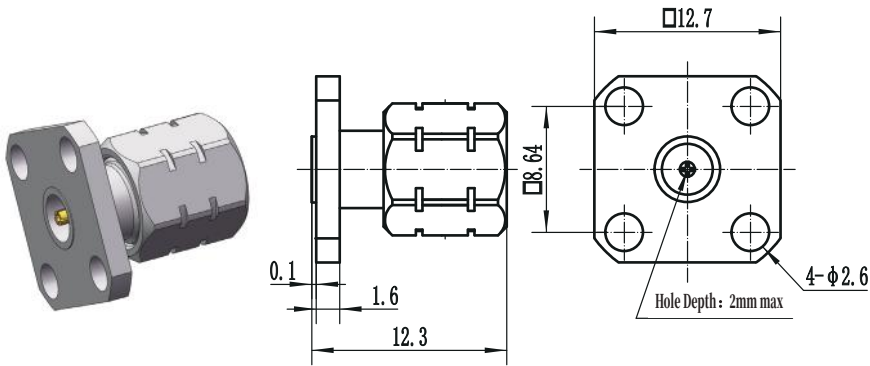
Accepts PIN DIA.	Model No.
Φ0.23mm	1.85-KFD7
Φ0.30mm	1.85-KFD8



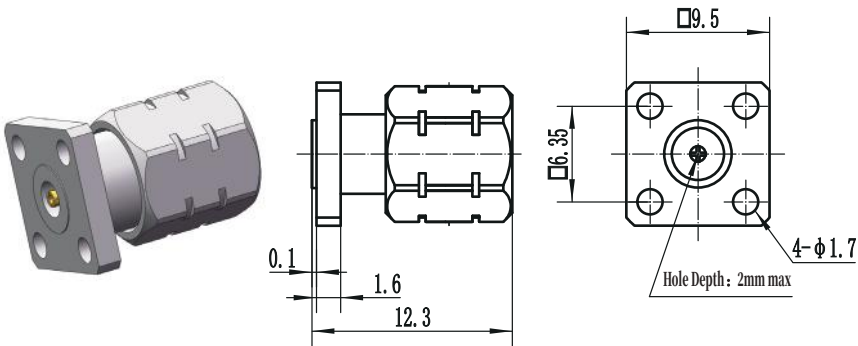
Accepts PIN DIA.	Model No.
Φ0.23mm	1.85-KFD9
Φ0.30mm	1.85-KFD10



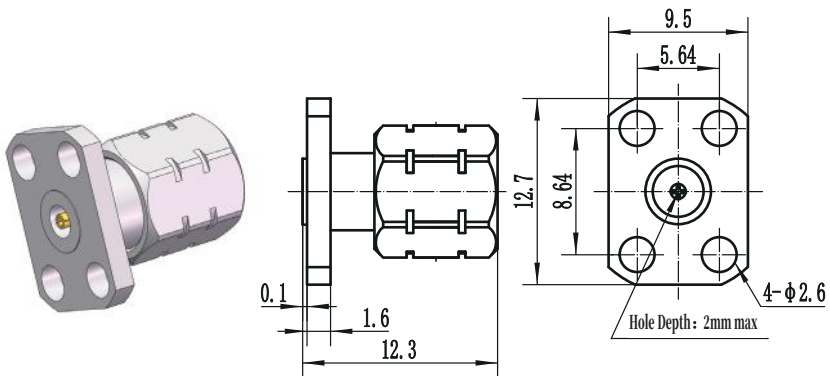
Accepts PIN DIA.	Model No.
Φ0.23mm	1.85-KFD11
Φ0.30mm	1.85-KFD12



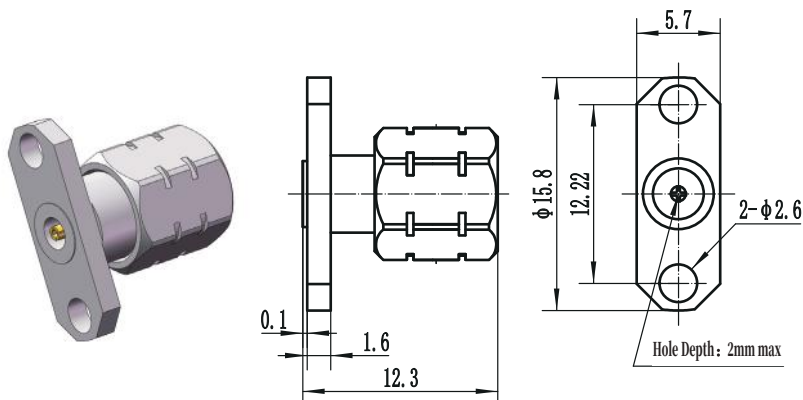
Accepts PIN DIA.	Model No.
ϕ 0.23mm	1.85-JFD1
ϕ 0.30mm	1.85-JFD2



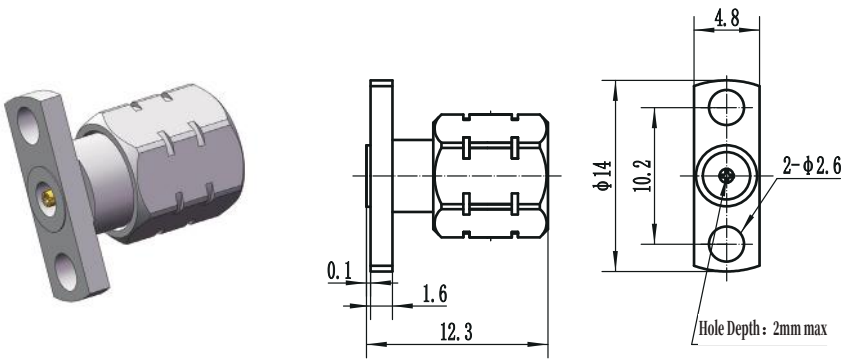
Accepts PIN DIA.	Model No.
ϕ 0.23mm	1.85-JFD3
ϕ 0.30mm	1.85-JFD4



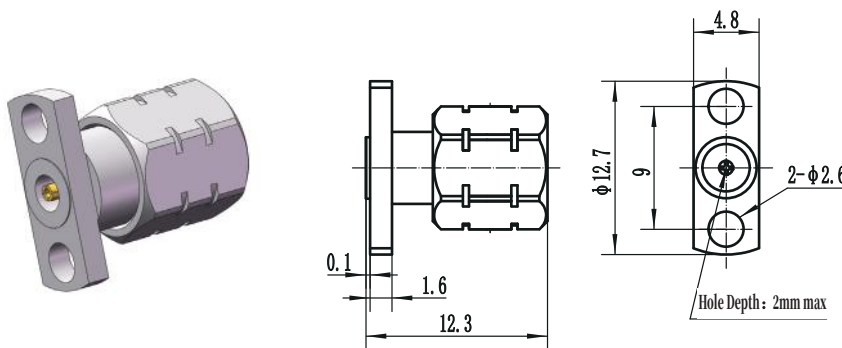
Accepts PIN DIA.	Model No.
ϕ 0.23mm	1.85-JFD5
ϕ 0.30mm	1.85-JFD6



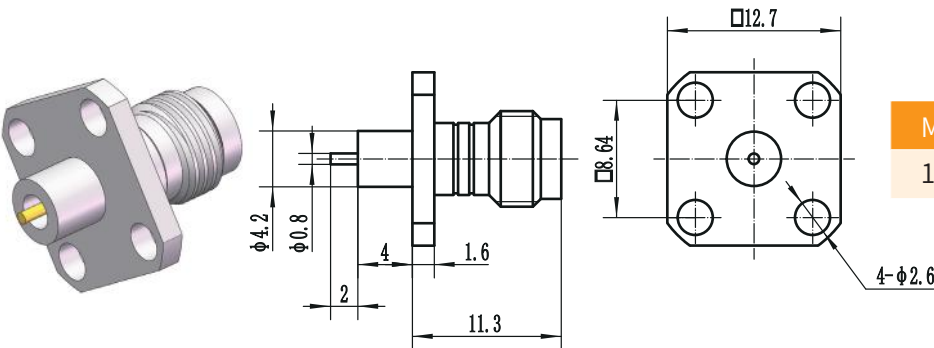
Accepts PIN DIA.	Model No.
ϕ 0.23mm	1.85-JFD7
ϕ 0.30mm	1.85-JFD8



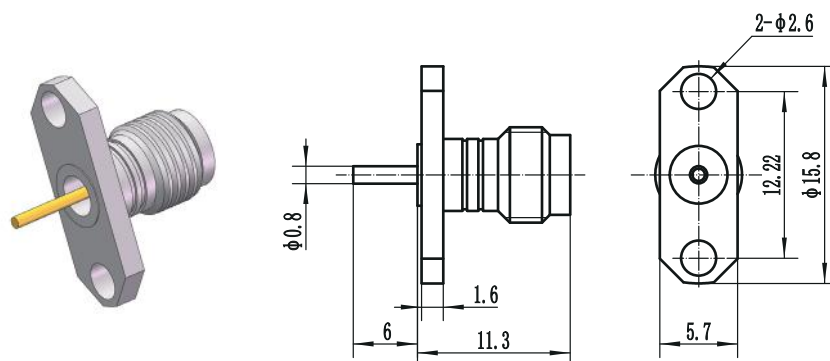
Accepts PIN DIA.	Model No.
Φ0.23mm	1.85-JFD9
Φ0.30mm	1.85-JFD10



Accepts PIN DIA.	Model No.
Φ0.23mm	1.85-JFD11
Φ0.30mm	1.85-JFD12

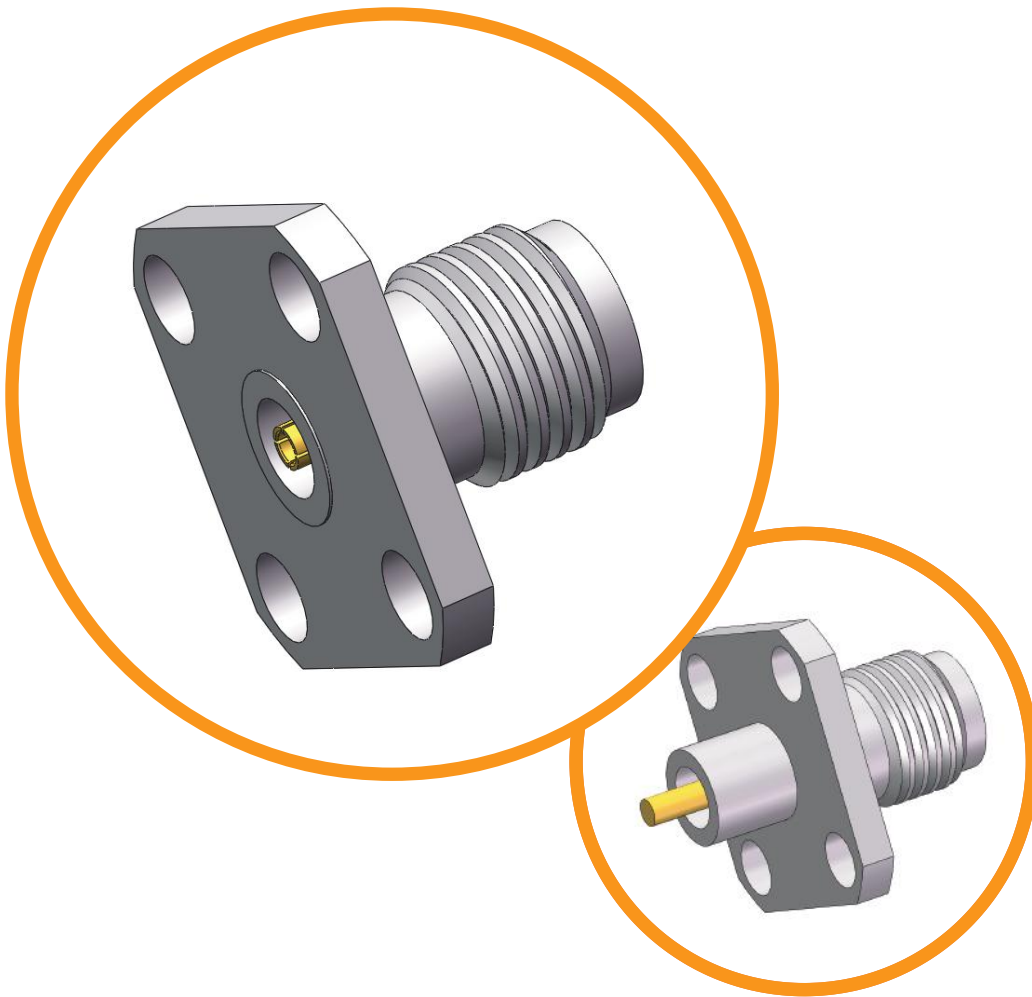


Model No.
1.85-KFD13



Model No.
1.85-KFD14

2.4mm DC to 50 GHz



Low VSWR

Ultra-low loss

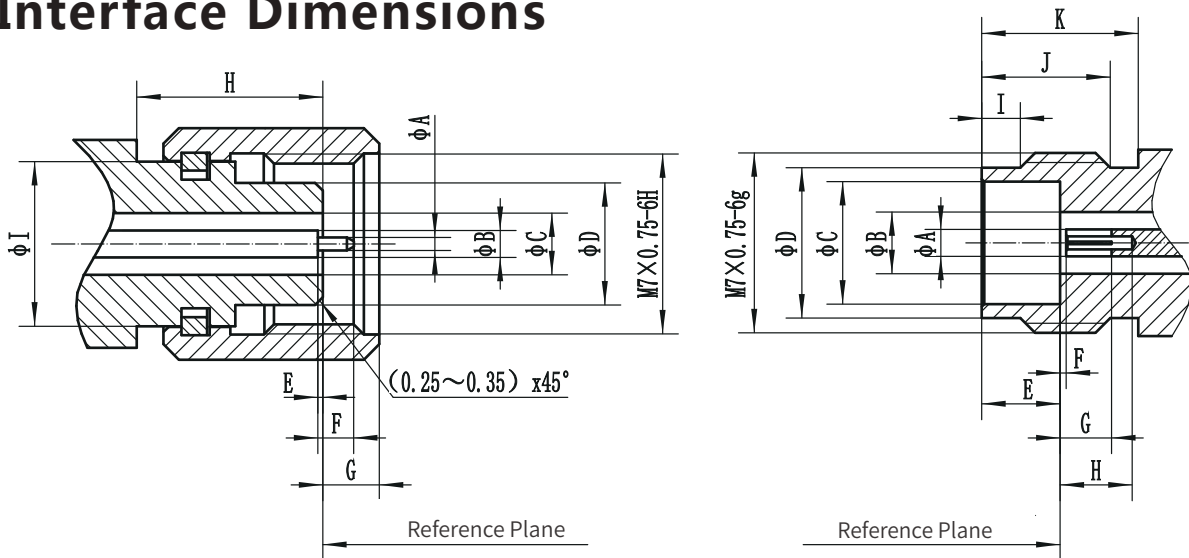
Durable & rugged

Extremely long service life

2.4mm Connector

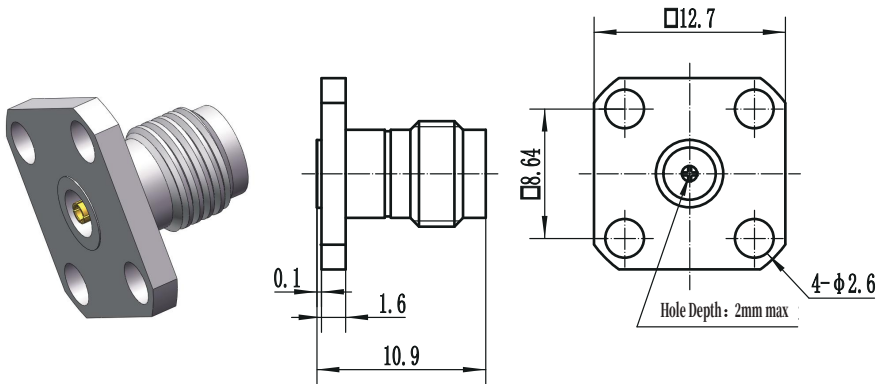
Electrical Data	Impedance	50 Ω	
	Frequency Range	DC ~ 50 GHz	
	VSWR	1.2 (Typical)	
	IL	$\leq 0.06 \sqrt{F(\text{GHz})}$ dB	
	Contact Resistance	Center Contact	$\leq 3 \text{ m}\Omega$
		Outer Contact	$\leq 2 \text{ m}\Omega$
	Insulation Resistance	$\geq 5000 \text{ M}\Omega$	
	Dielectric Withstanding Voltage	$\geq 500 \text{ Vrms}$	
Environmental Data	Temperature Range	-55C° ~+ 165C°	
Material / Plating	Bodies, Outer Contacts	Stainless Steel / Passivated; Brass / Gold, Nickel	
	Center Contacts	Beryllium Copper, Brass / Gold	
	Insulators	PEI, PTFE	

Interface Dimensions

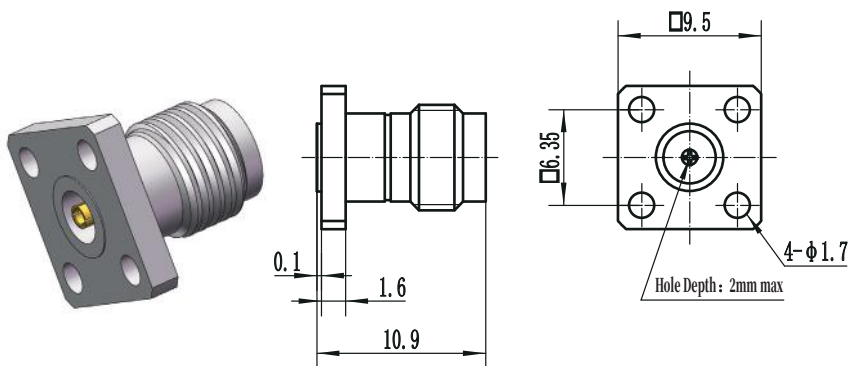


Plug (male)		
	Min (mm)	Max (mm)
A	0.498	0.523
B	1.039	1.054
C	2.39	2.41
D	4.72	4.75
E	0.00	0.08
F	1.35	1.45
G	1.85	2.44
H	7.37	-
I	6.32	6.37

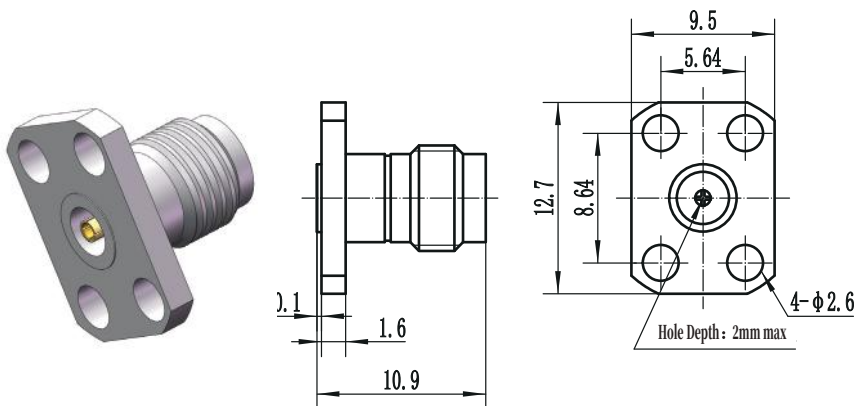
Jack (female)		
	Min (mm)	Max (mm)
A	1.039	1.054
B	2.39	2.41
C	4.770	4.795
D	5.79	5.89
E	3.00	3.10
F	0.00	0.08
G	1.52	-
H	2.64	-
I	1.37	1.62
J	4.80	5.05
K	5.99	-



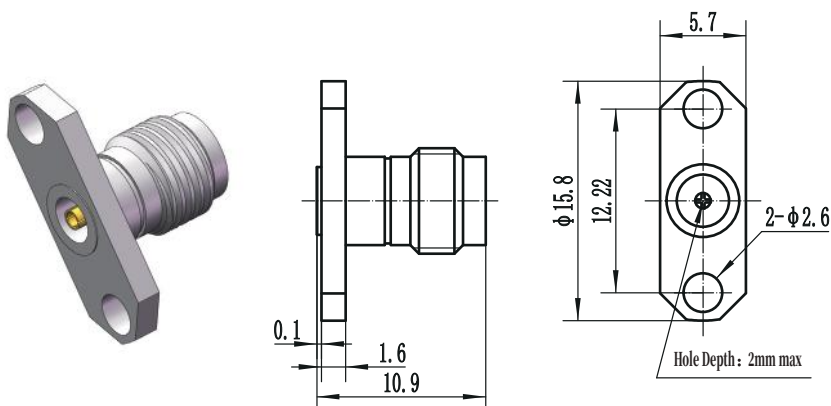
Accepts PIN DIA.	Model No.
Φ0.23mm	2.4-KFD1
Φ0.30mm	2.4-KFD2
Φ0.38mm	2.4-KFD3
Φ0.46mm	2.4-KFD4
Φ0.51mm	2.4-KFD5



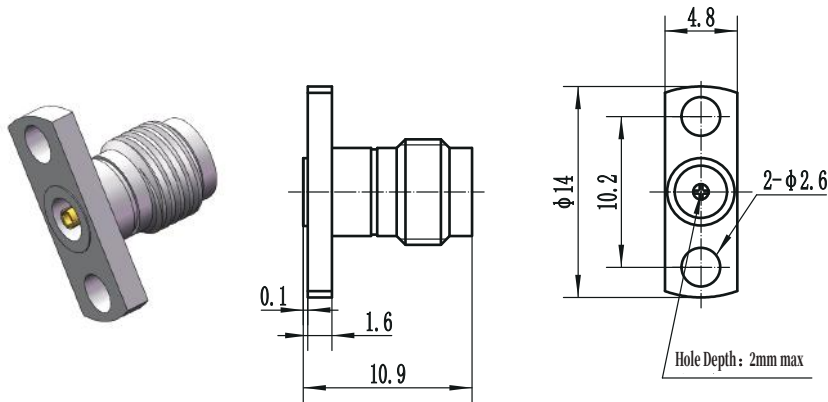
Accepts PIN DIA.	Model No.
Φ0.23mm	2.4-KFD6
Φ0.30mm	2.4-KFD7
Φ0.38mm	2.4-KFD8
Φ0.46mm	2.4-KFD9
Φ0.51mm	2.4-KFD10



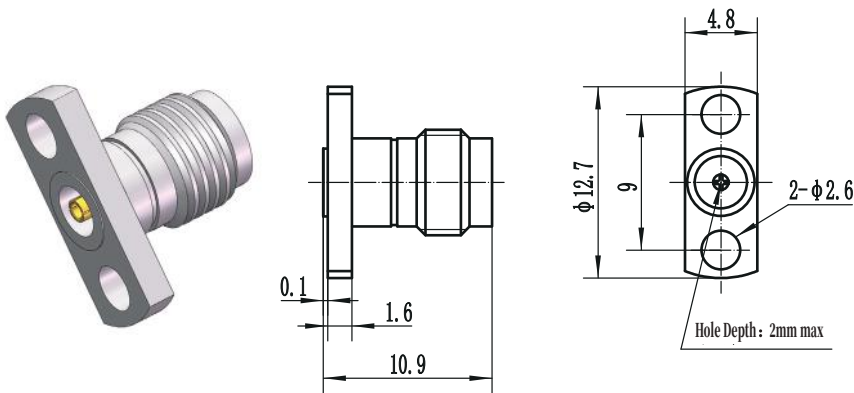
Accepts PIN DIA.	Model No.
Φ0.23mm	2.4-KFD11
Φ0.30mm	2.4-KFD12
Φ0.38mm	2.4-KFD13
Φ0.46mm	2.4-KFD14
Φ0.51mm	2.4-KFD15



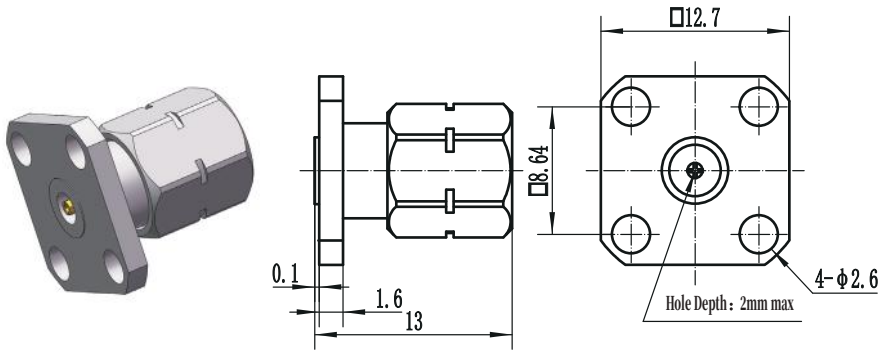
Accepts PIN DIA.	Model No.
Φ0.23mm	2.4-KFD16
Φ0.30mm	2.4-KFD17
Φ0.38mm	2.4-KFD18
Φ0.46mm	2.4-KFD19
Φ0.51mm	2.4-KFD20



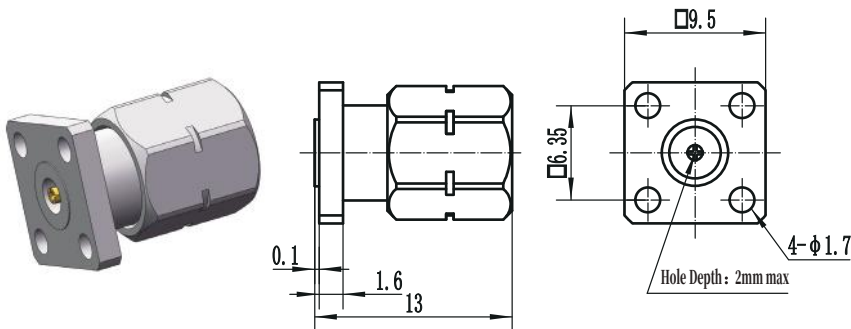
Accepts PIN DIA.	Model No.
Φ0.23mm	2.4-KFD21
Φ0.30mm	2.4-KFD22
Φ0.38mm	2.4-KFD23
Φ0.46mm	2.4-KFD24
Φ0.51mm	2.4-KFD25



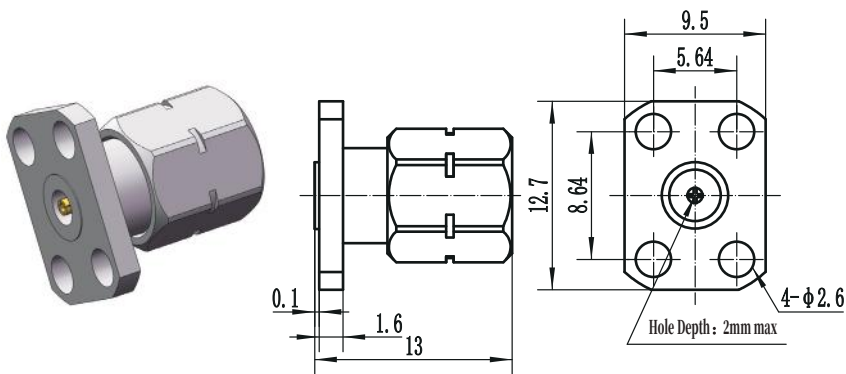
Accepts PIN DIA.	Model No.
Φ0.23mm	2.4-KFD26
Φ0.30mm	2.4-KFD27
Φ0.38mm	2.4-KFD28
Φ0.46mm	2.4-KFD29
Φ0.51mm	2.4-KFD30



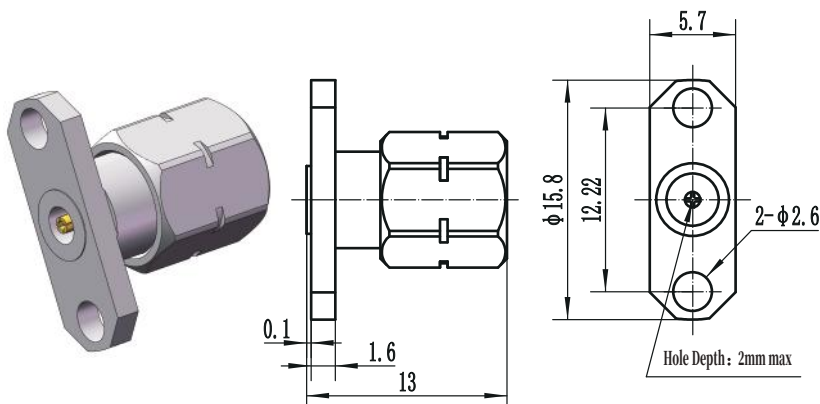
Accepts PIN DIA.	Model No.
Φ0.23mm	2.4-JFD1
Φ0.30mm	2.4-JFD2
Φ0.38mm	2.4-JFD3
Φ0.46mm	2.4-JFD4
Φ0.51mm	2.4-JFD5



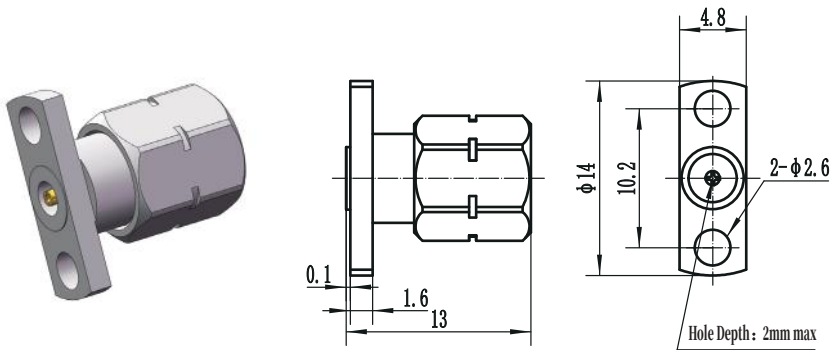
Accepts PIN DIA.	Model No.
Φ0.23mm	2.4-JFD6
Φ0.30mm	2.4-JFD7
Φ0.38mm	2.4-JFD8
Φ0.46mm	2.4-JFD9
Φ0.51mm	2.4-JFD10



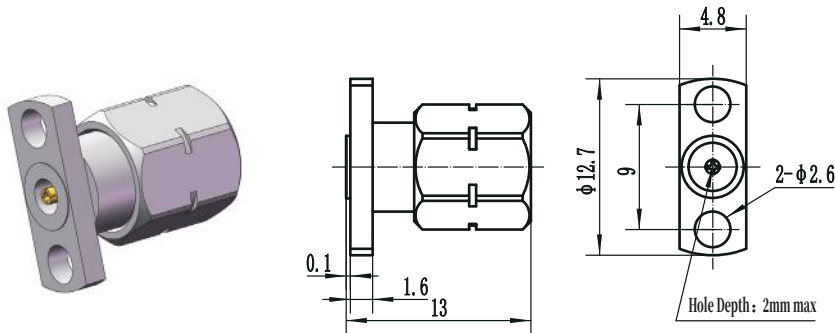
Accepts PIN DIA.	Model No.
Φ0.23mm	2.4-JFD11
Φ0.30mm	2.4-JFD12
Φ0.38mm	2.4-JFD13
Φ0.46mm	2.4-JFD14
Φ0.51mm	2.4-JFD15



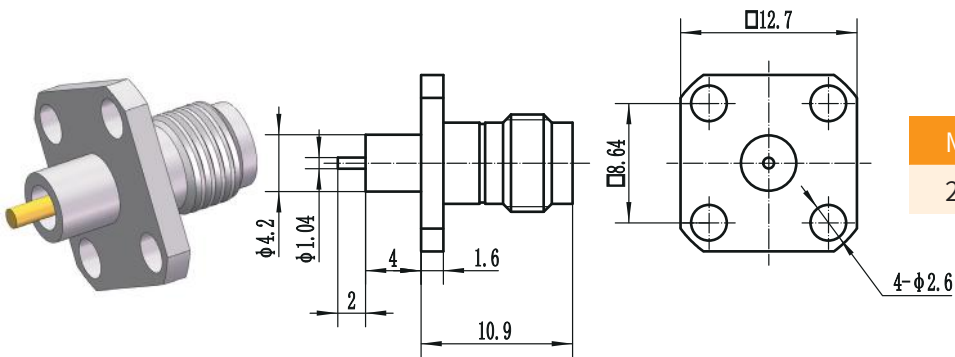
Accepts PIN DIA.	Model No.
Φ0.23mm	2.4-JFD16
Φ0.30mm	2.4-JFD17
Φ0.38mm	2.4-JFD18
Φ0.46mm	2.4-JFD19
Φ0.51mm	2.4-JFD20



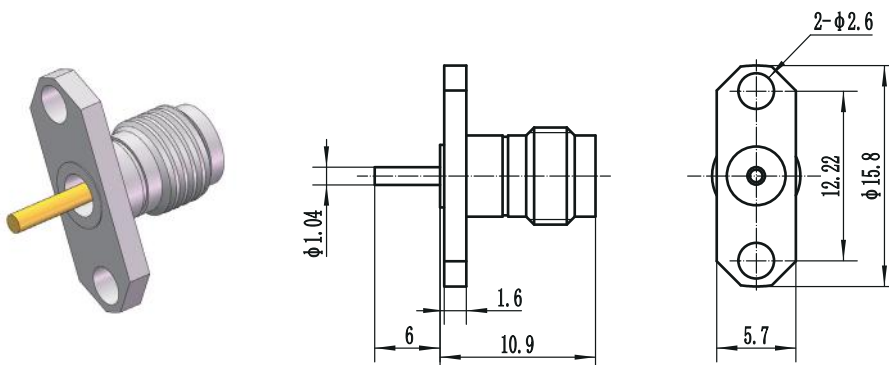
Accepts PIN DIA.	Model No.
Φ0.23mm	2.4-JFD21
Φ0.30mm	2.4-JFD22
Φ0.38mm	2.4-JFD23
Φ0.46mm	2.4-JFD24
Φ0.51mm	2.4-JFD25



Accepts PIN DIA.	Model No.
Φ0.23mm	2.4-JFD26
Φ0.30mm	2.4-JFD27
Φ0.38mm	2.4-JFD28
Φ0.46mm	2.4-JFD29
Φ0.51mm	2.4-JFD30

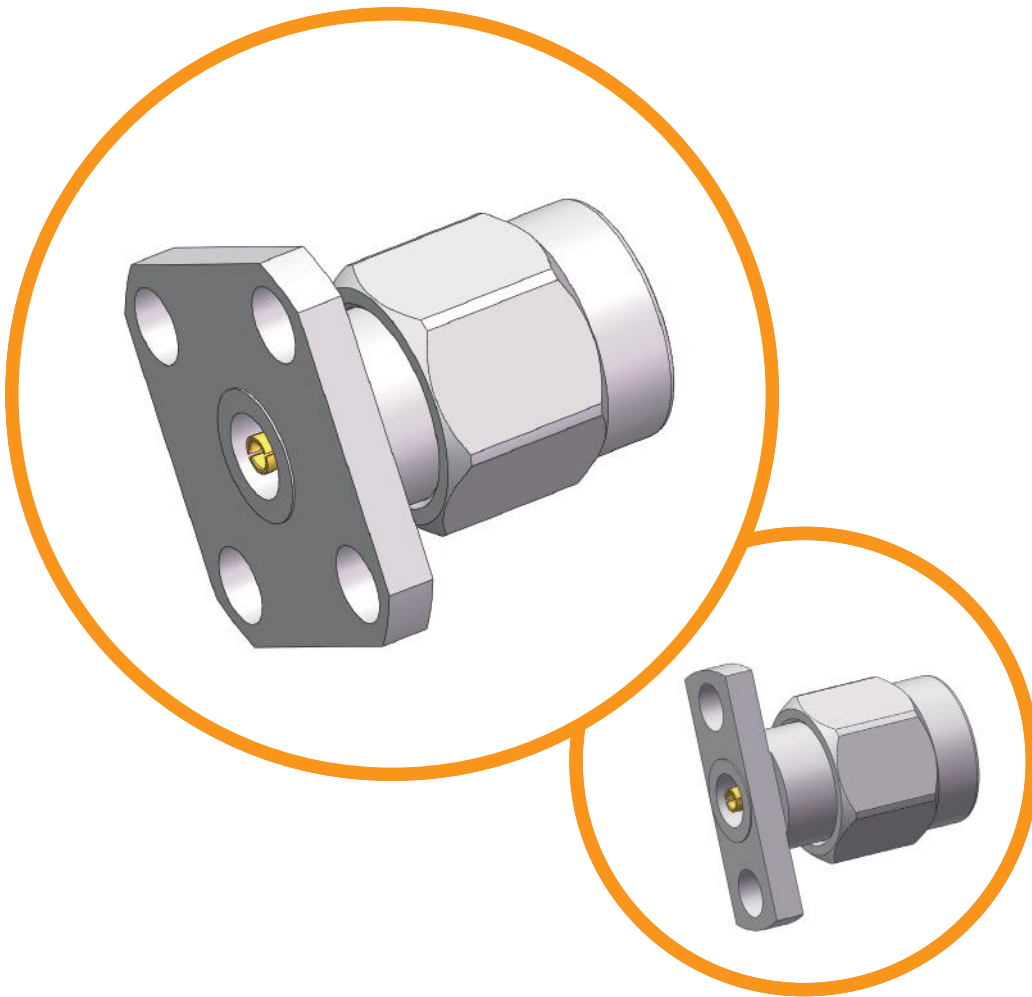


Model No.
2.4-KFD31



Model No.
2.4-KFD32

2.92mm DC to 40 GHz



Low VSWR

Ultra-low loss

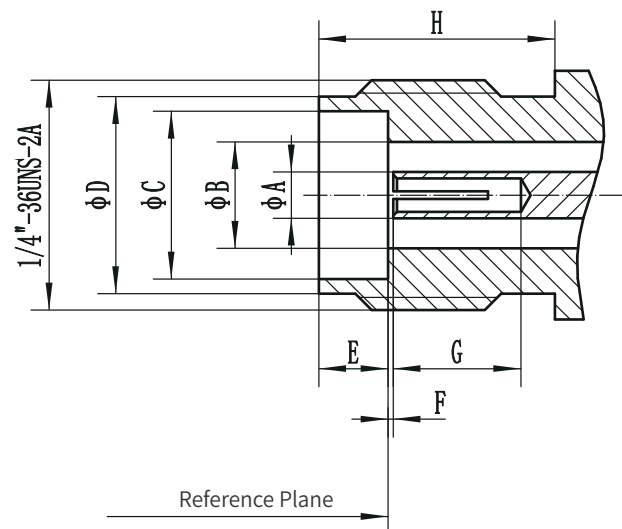
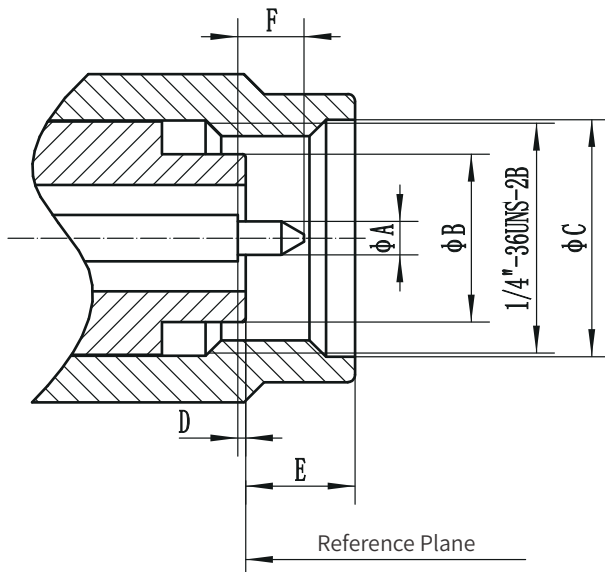
Durable & rugged

Extremely long service life

2.92mm Connector

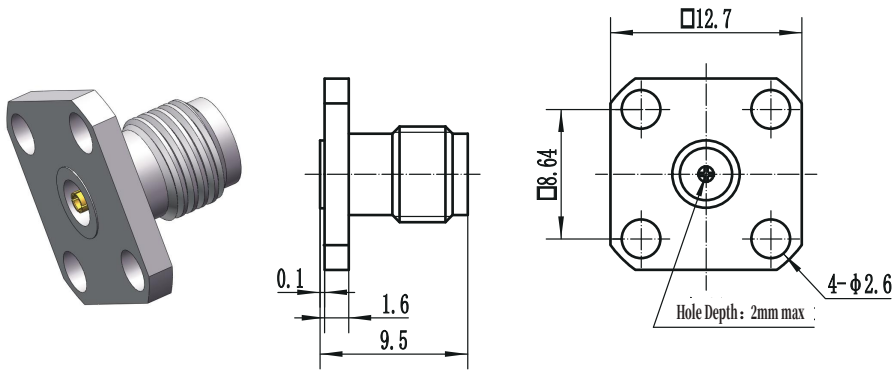
Electrical Data	Impedance	50 Ω
	Frequency Range	DC ~ 40 GHz
	VSWR	1.2 (Typical)
	IL	$\leq 0.06 \sqrt{F(\text{GHz})}$ dB
	Contact Resistance	Center Contact ≤ 4 m Ω Outer Contact ≤ 2 m Ω
	Insulation Resistance	≥ 5000 M Ω
	Dielectric Withstanding Voltage	≥ 500 Vrms
	Environmental Data	Temperature Range
Material / Plating	Bodies, Outer Contacts	Stainless Steel / Passivated; Brass / Gold, Nickel
	Center Contacts	Beryllium Copper, Brass / Gold
	Insulators	PEI, PTFE

Interface Dimensions

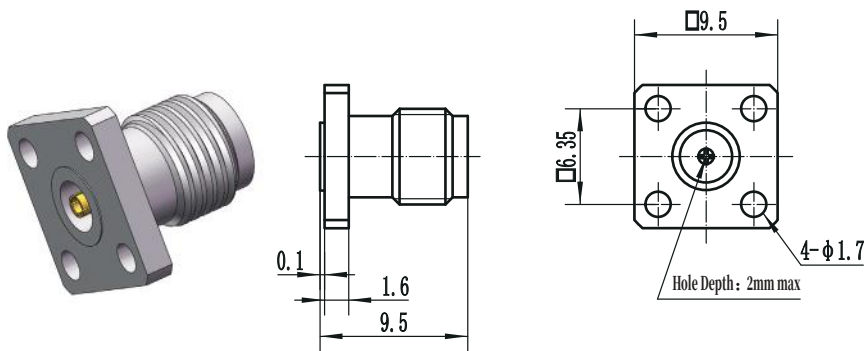


Plug (male)		
	Min (mm)	Max (mm)
A	0.90	0.94
B	4.52	4.57
C	6.48	-
D	0.00	0.13
E	-	3.43
F	1.40	1.65

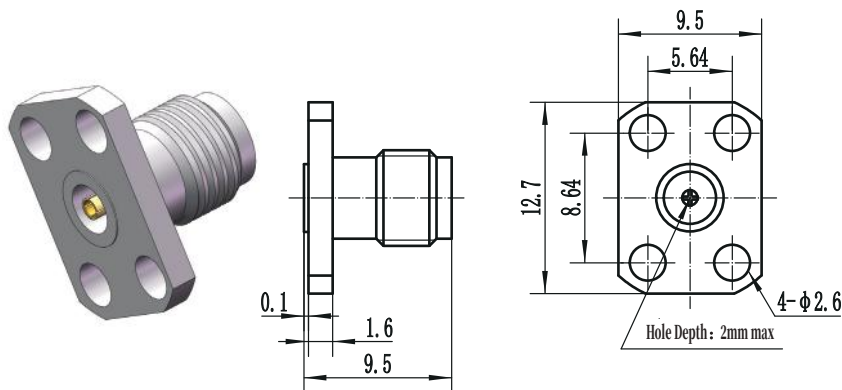
Jack (female)		
	Min (mm)	Max (mm)
A	(1.27)	
B	2.90	2.95
C	4.60	4.65
D	5.23	5.44
E	1.88	1.98
F	0.00	0.13
G	2.67	-
H	5.54	-



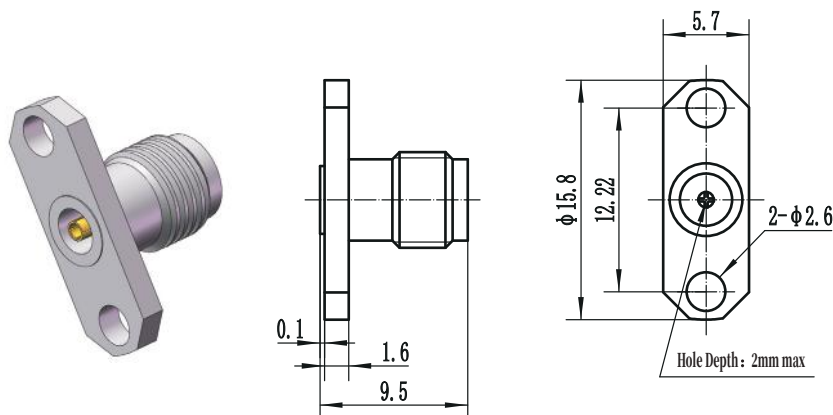
Accepts PIN DIA.	Model No.
ϕ 0.23mm	2.92-KFD1
ϕ 0.30mm	2.92-KFD2
ϕ 0.38mm	2.92-KFD3
ϕ 0.46mm	2.92-KFD4
ϕ 0.51mm	2.92-KFD5



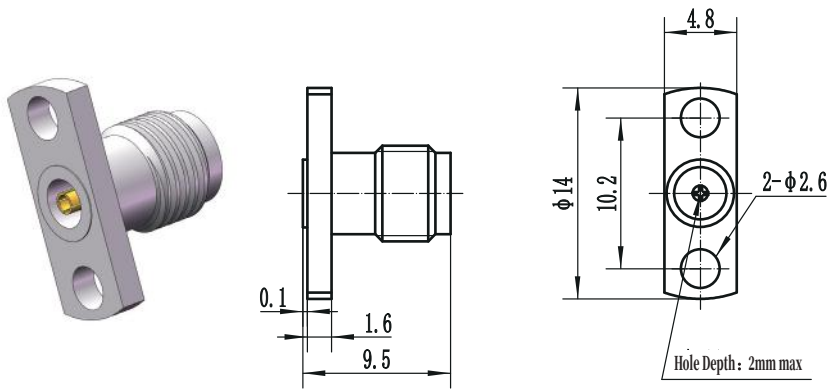
Accepts PIN DIA.	Model No.
ϕ 0.23mm	2.92-KFD6
ϕ 0.30mm	2.92-KFD7
ϕ 0.38mm	2.92-KFD8
ϕ 0.46mm	2.92-KFD9
ϕ 0.51mm	2.92-KFD10



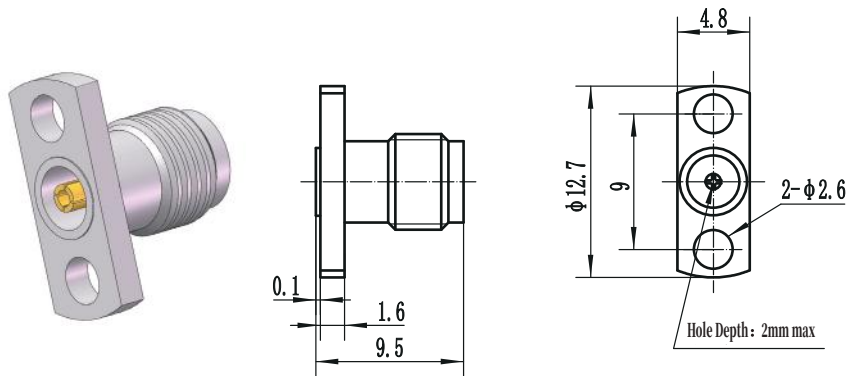
Accepts PIN DIA.	Model No.
ϕ 0.23mm	2.92-KFD11
ϕ 0.30mm	2.92-KFD12
ϕ 0.38mm	2.92-KFD13
ϕ 0.46mm	2.92-KFD14
ϕ 0.51mm	2.92-KFD15



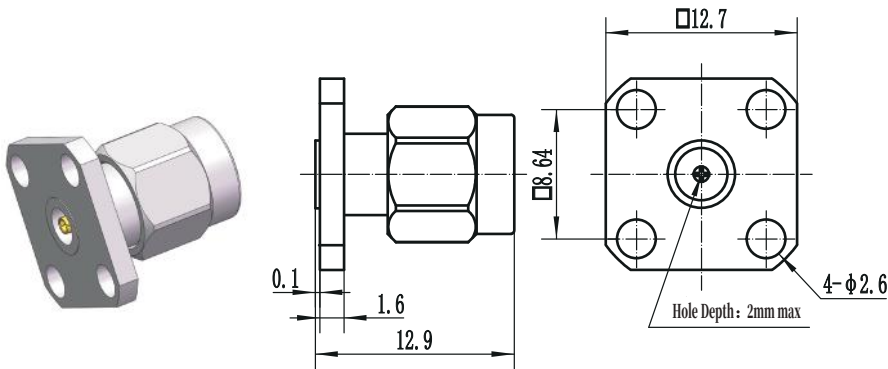
Accepts PIN DIA.	Model No.
ϕ 0.23mm	2.92-KFD16
ϕ 0.30mm	2.92-KFD17
ϕ 0.38mm	2.92-KFD18
ϕ 0.46mm	2.92-KFD19
ϕ 0.51mm	2.92-KFD20



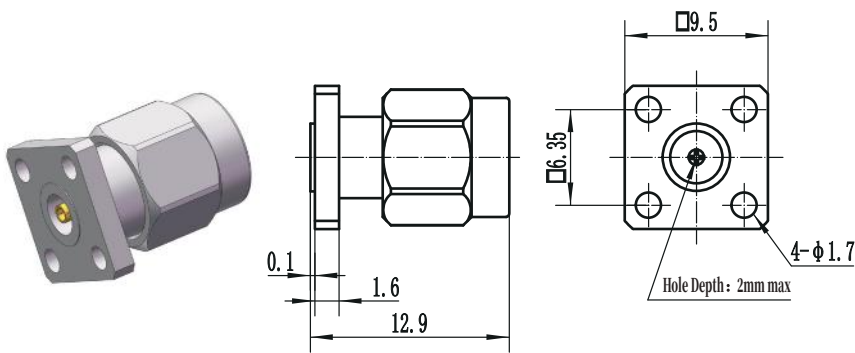
Accepts PIN DIA.	Model No.
Φ0.23mm	2.92-KFD21
Φ0.30mm	2.92-KFD22
Φ0.38mm	2.92-KFD23
Φ0.46mm	2.92-KFD24
Φ0.51mm	2.92-KFD25



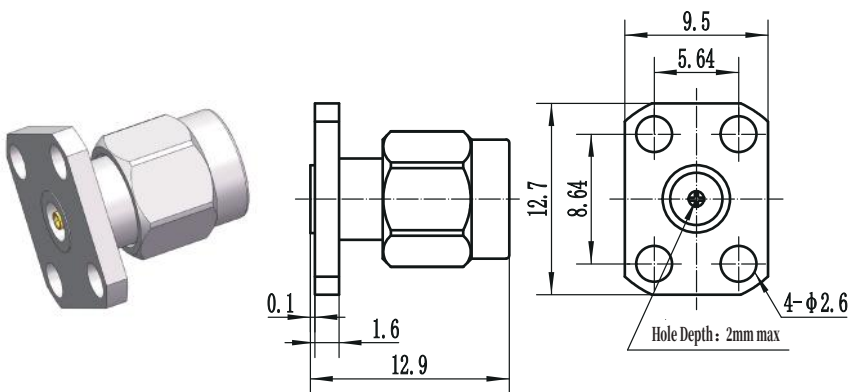
Accepts PIN DIA.	Model No.
Φ0.23mm	2.92-KFD26
Φ0.30mm	2.92-KFD27
Φ0.38mm	2.92-KFD28
Φ0.46mm	2.92-KFD29
Φ0.51mm	2.92-KFD30



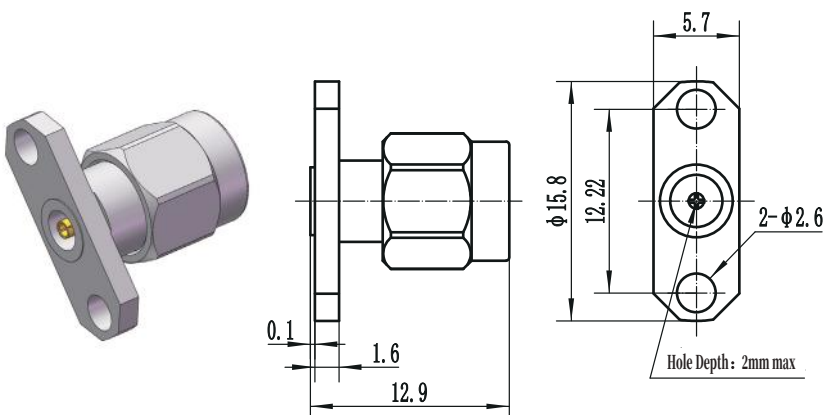
Accepts PIN DIA.	Model No.
Φ0.23mm	2.92-JFD1
Φ0.30mm	2.92-JFD2
Φ0.38mm	2.92-JFD3
Φ0.46mm	2.92-JFD4
Φ0.51mm	2.92-JFD5



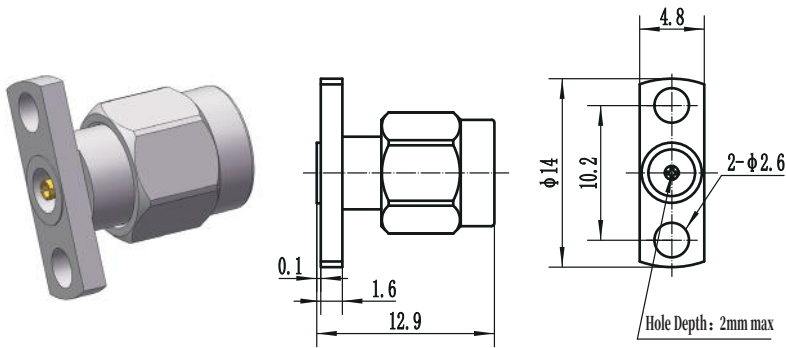
Accepts PIN DIA.	Model No.
Φ0.23mm	2.92-JFD6
Φ0.30mm	2.92-JFD7
Φ0.38mm	2.92-JFD8
Φ0.46mm	2.92-JFD9
Φ0.51mm	2.92-JFD10



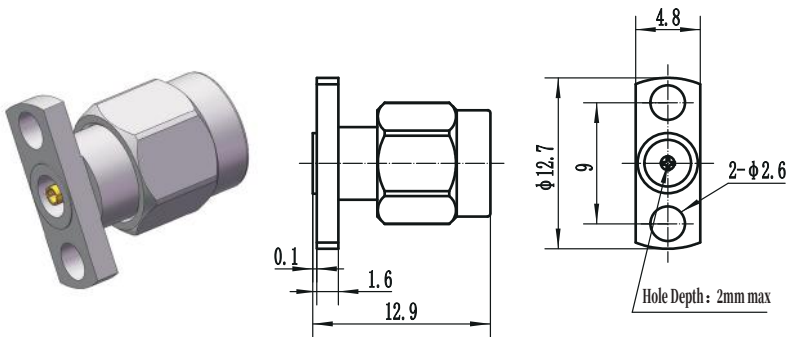
Accepts PIN DIA.	Model No.
Φ0.23mm	2.92-JFD11
Φ0.30mm	2.92-JFD12
Φ0.38mm	2.92-JFD13
Φ0.46mm	2.92-JFD14
Φ0.51mm	2.92-JFD15



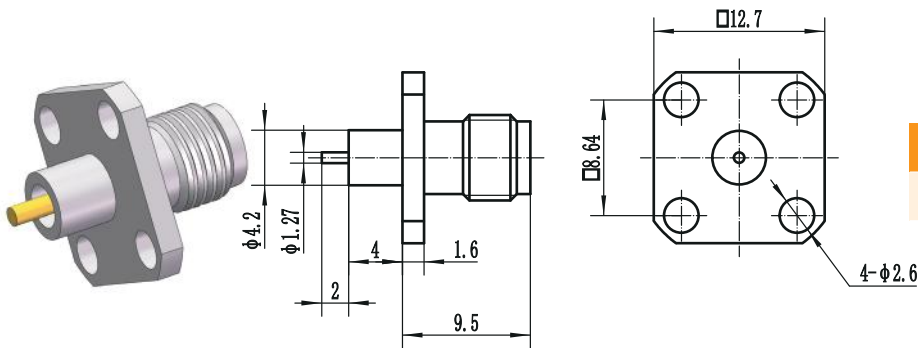
Accepts PIN DIA.	Model No.
Φ0.23mm	2.92-JFD16
Φ0.30mm	2.92-JFD17
Φ0.38mm	2.92-JFD18
Φ0.46mm	2.92-JFD19
Φ0.51mm	2.92-JFD20



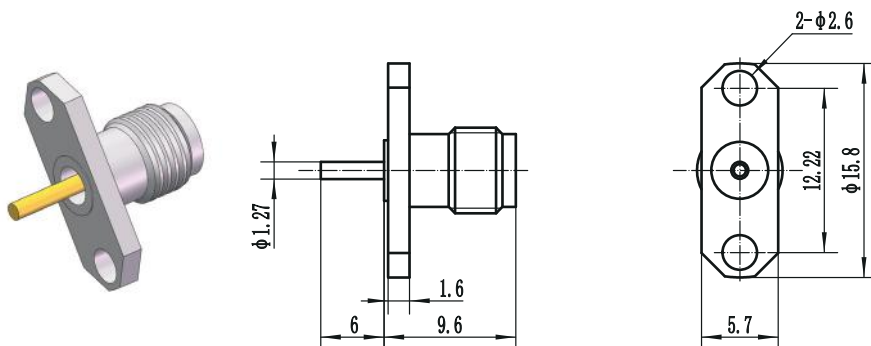
Accepts PIN DIA.	Model No.
Φ0.23mm	2.92-JFD21
Φ0.30mm	2.92-JFD22
Φ0.38mm	2.92-JFD23
Φ0.46mm	2.92-JFD24
Φ0.51mm	2.92-JFD25



Accepts PIN DIA.	Model No.
Φ0.23mm	2.92-JFD26
Φ0.30mm	2.92-JFD27
Φ0.38mm	2.92-JFD28
Φ0.46mm	2.92-JFD29
Φ0.51mm	2.92-JFD30

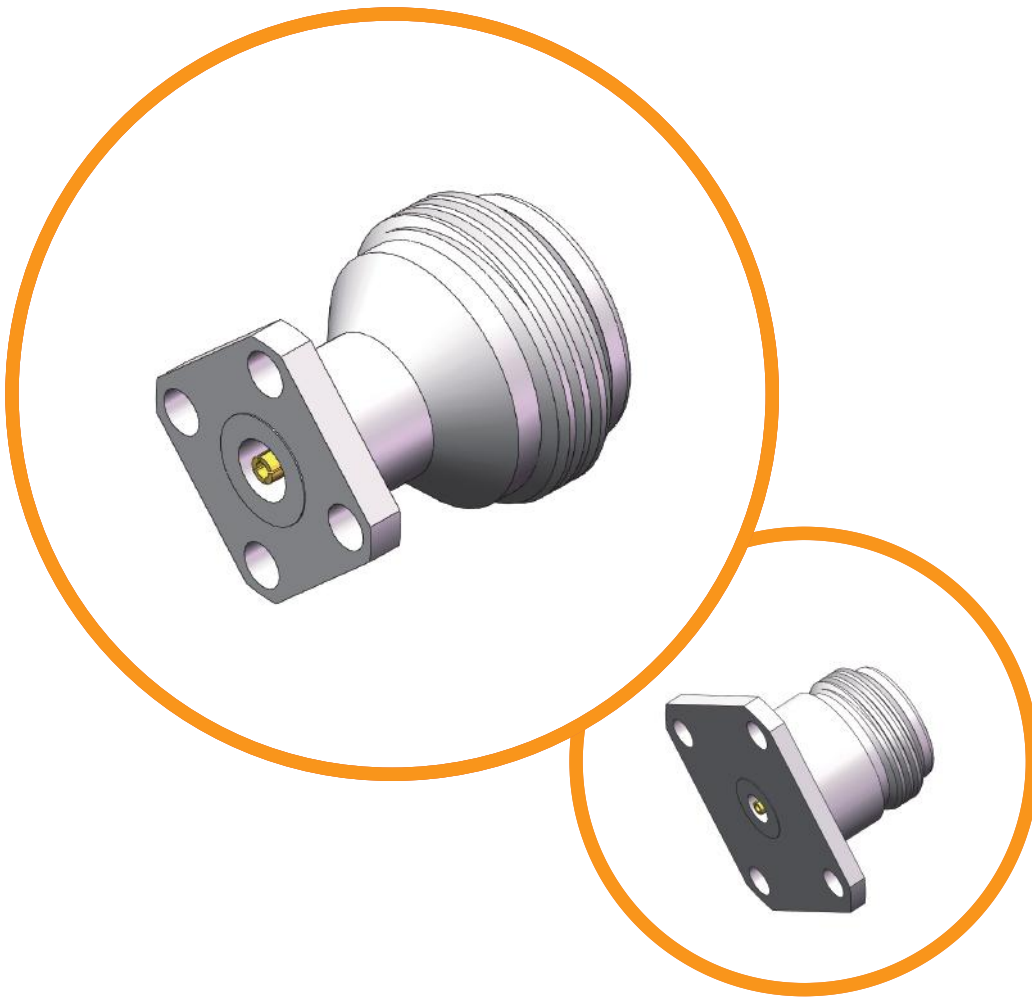


Model No.
2.92-KFD31



Model No.
2.92-KFD32

N DC to 18 GHz

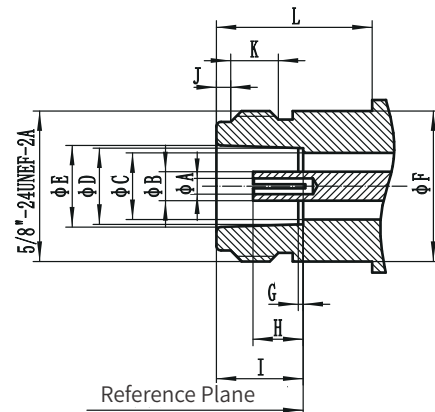
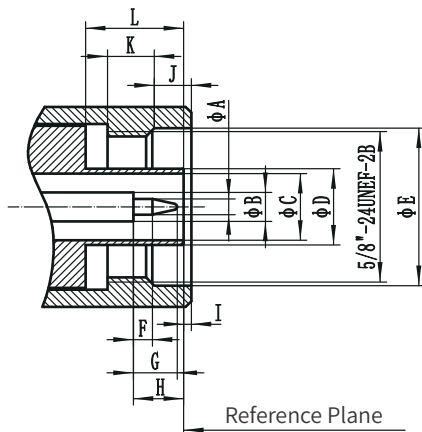


- Low VSWR
- Ultra-low loss
- Durable & rugged
- Extremely long service life

N Connector

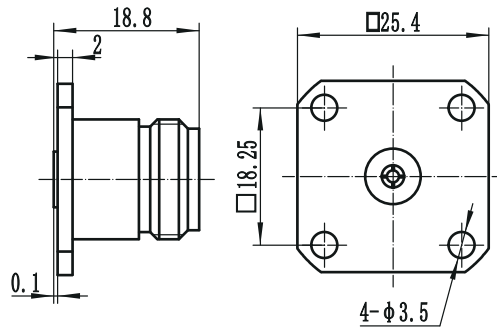
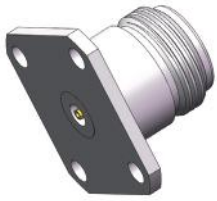
Electrical Data	Impedance	50 Ω	
	Frequency Range	DC ~ 18 GHz	
	VSWR	1.2 (Typical)	
	IL	$\leq 0.06 \sqrt{F(\text{GHz})}$ dB	
	Contact Resistance	Center Contact	≤ 1.5 m Ω
		Outer Contact	≤ 0.5 m Ω
	Insulation Resistance	≥ 5000 M Ω	
	Dielectric Withstanding Voltage	≥ 1500 Vrms	
Environmental Data	Temperature Range	-55C° ~+ 165C°	
Material / Plating	Bodies, Outer Contacts	Stainless Steel / Passivated	
		Brass / Gold, Nickel, Ternary Alloy	
	Center Contacts	Beryllium Copper, Brass / Gold, Silver	
	Insulators	PTFE, PEI	

Interface Dimensions

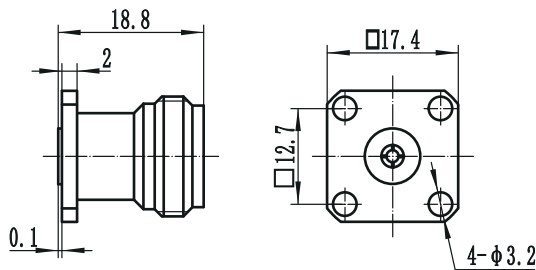


Plug (male)		
	Min (mm)	Max (mm)
A	1.64	1.67
B	3.03	3.05
C	6.99	7.01
D	7.98	8.04
E	16.00	-
F	1.78	2.03
G	(4.52)	
H	5.33	5.84
I	0.28	1.30
J	4.01	4.27
K	4.50	5.00
L	9.19	9.58

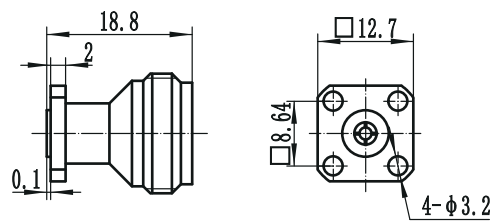
Jack (female)		
	Min (mm)	Max (mm)
A	1.60	1.68
B	3.02	3.15
C	6.99	7.01
D	8.05	8.10
E	8.53	8.74
F	-	15.93
G	0.51	1.02
H	4.75	5.26
I	4.57	5.59
J	1.19	1.96
K	4.57	5.59
L	11.23	-



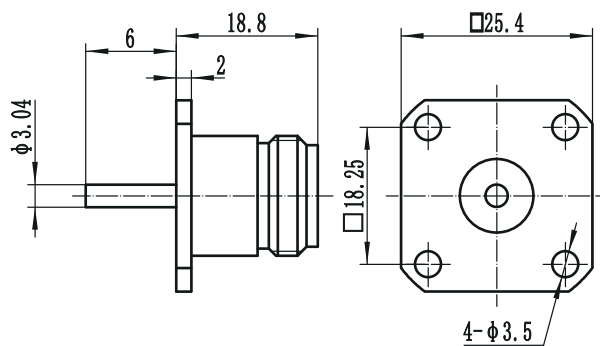
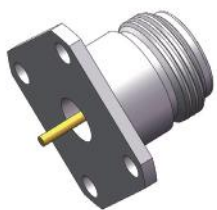
Accepts PIN DIA.	Model No.
Φ0.90mm	N-KFD1
Φ0.51mm	N-KFD2
Φ0.46mm	N-KFD3
Φ0.38mm	N-KFD4



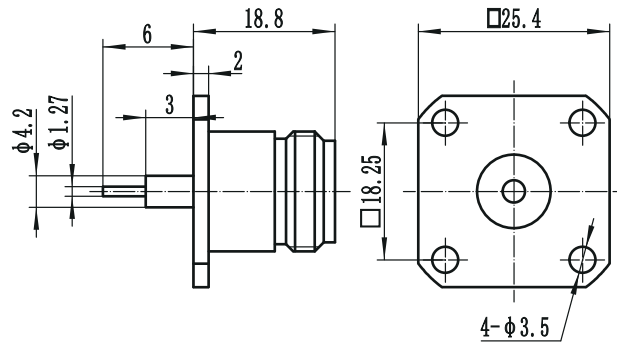
Accepts PIN DIA.	Model No.
Φ0.90mm	N-KFD5
Φ0.51mm	N-KFD6
Φ0.46mm	N-KFD7
Φ0.38mm	N-KFD8



Accepts PIN DIA.	Model No.
Φ0.90mm	N-KFD9
Φ0.51mm	N-KFD10
Φ0.46mm	N-KFD11
Φ0.38mm	N-KFD12



Model No.
N-KFD13

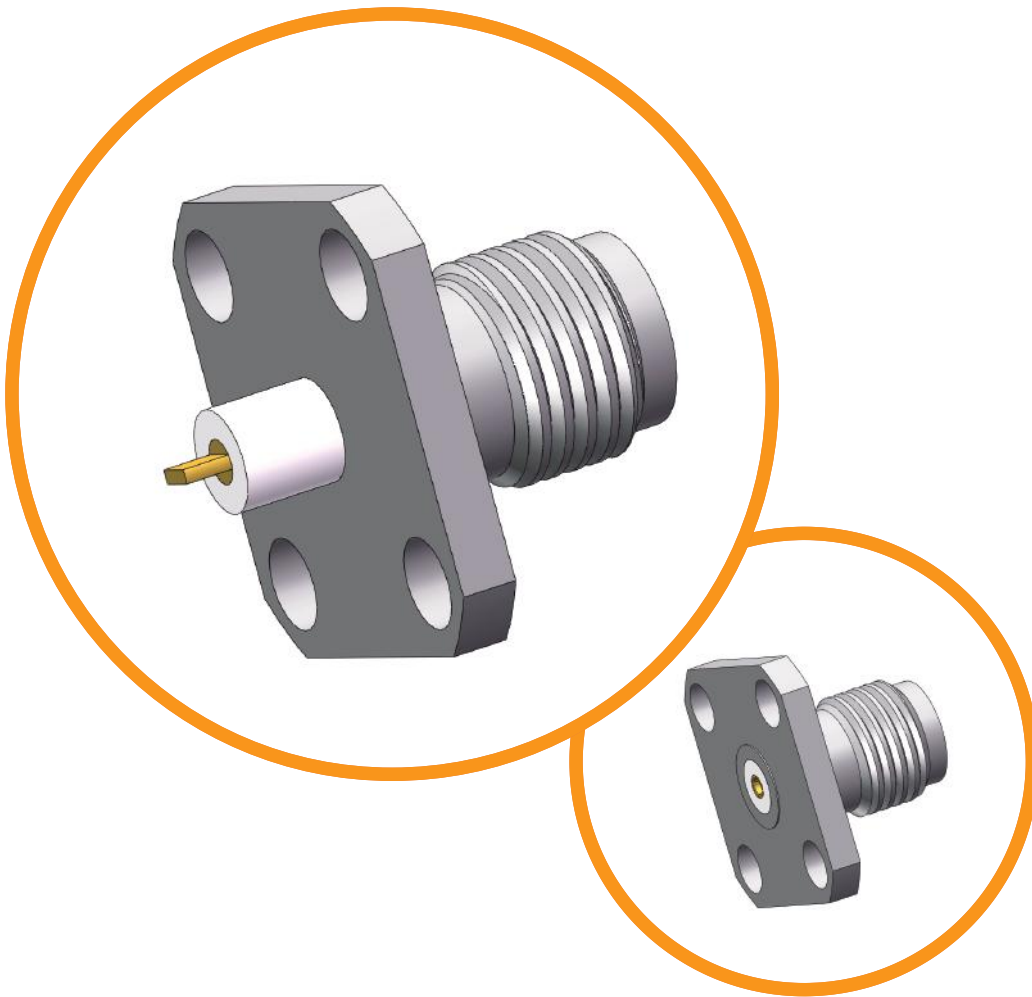


Model No.

N-KFD14

SMA

DC to 18 GHz



Low VSWR

Ultra-low loss

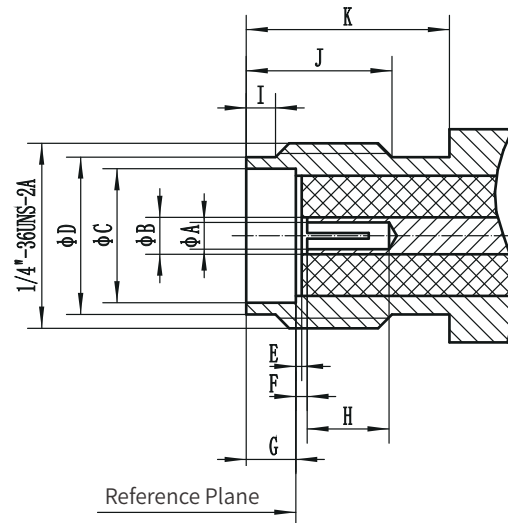
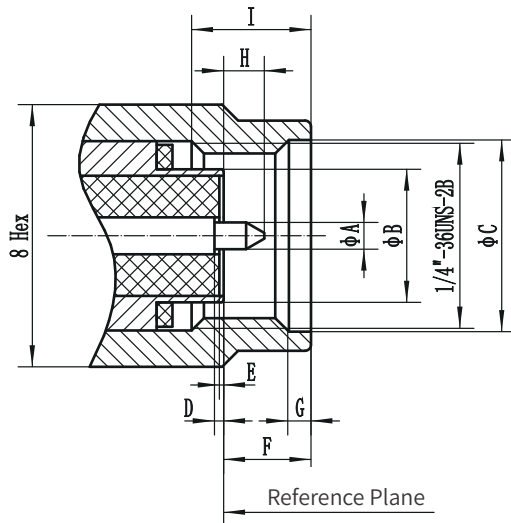
Durable & rugged

Extremely long service life

SMA Connector

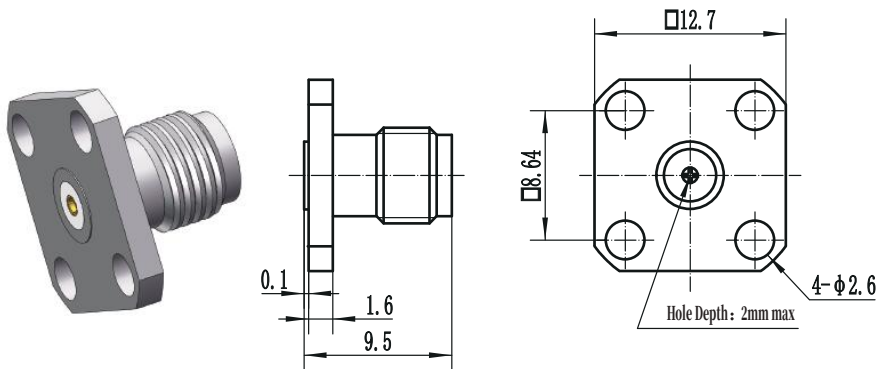
Electrical Data	Impedance	50 Ω
	Frequency Range	DC ~ 18 GHz
	VSWR	1.15 (Typical)
	IL	$\leq 0.06 \sqrt{F(\text{GHz})}$ dB
	Contact Resistance	Center Contact ≤ 3 mΩ Outer Contact ≤ 2 mΩ
	Insulation Resistance	≥ 5000 MΩ
	Dielectric Withstanding Voltage	≥ 500 Vrms
	Environmental Data	Temperature Range
Material / Plating	Bodies, Outer Contacts	Stainless Steel / Passivated; Brass / Gold, Nickel
	Center Contacts	Beryllium Copper, Brass / Gold
	Insulators	PTFE

Interface Dimensions

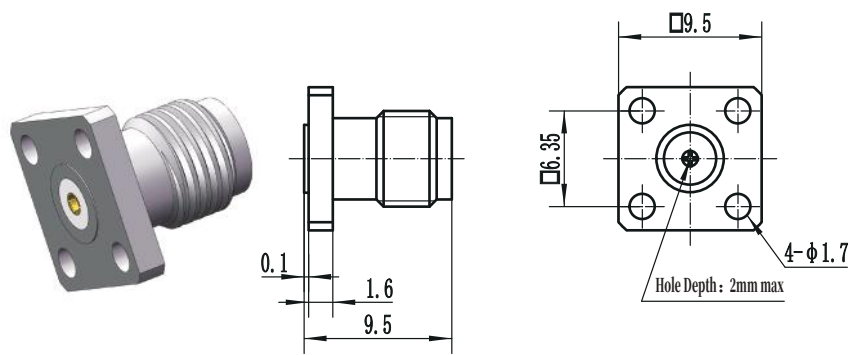


Plug (male)		
	Min (mm)	Max (mm)
A	0.902	0.94
B	-	4.592
C	6.35	-
D	0.00	0.25
E	0.00	0.25
F	-	3.43
G	0.38	1.14
H	-	2.54
I	3.30	-

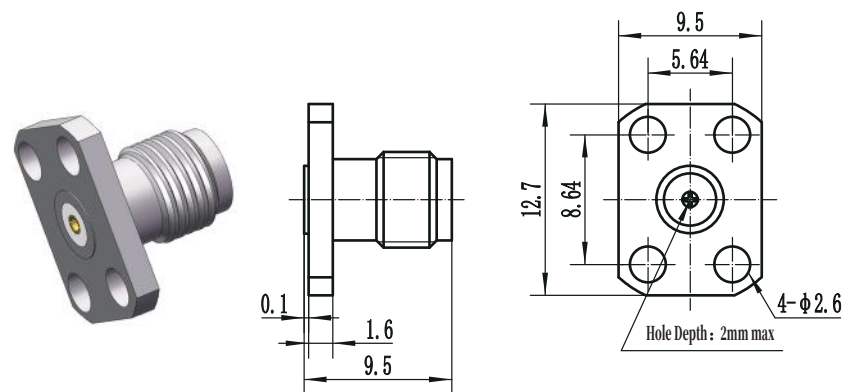
Jack (female)		
	Min (mm)	Max (mm)
A	0.902	0.94
B	1.24	1.30
C	4.597	-
D	5.28	5.49
E	0.00	0.25
F	0.00	0.25
G	1.88	1.98
H	2.67	-
I	0.38	1.14
J	4.32	-
K	5.54	-



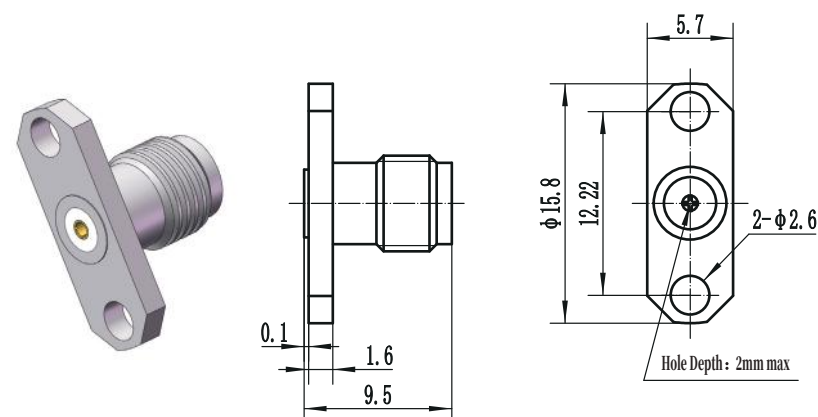
Accepts PIN DIA.	Model No.
Φ0.23mm	SMA-KFD1
Φ0.30mm	SMA-KFD2
Φ0.38mm	SMA-KFD3
Φ0.46mm	SMA-KFD4
Φ0.51mm	SMA-KFD5
Φ0.90mm	SMA-KFD6



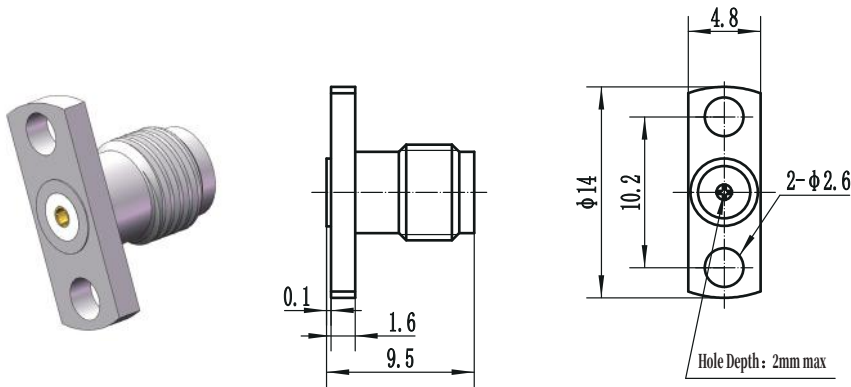
Accepts PIN DIA.	Model No.
Φ0.23mm	SMA-KFD7
Φ0.30mm	SMA-KFD8
Φ0.38mm	SMA-KFD9
Φ0.46mm	SMA-KFD10
Φ0.51mm	SMA-KFD11
Φ0.90mm	SMA-KFD12



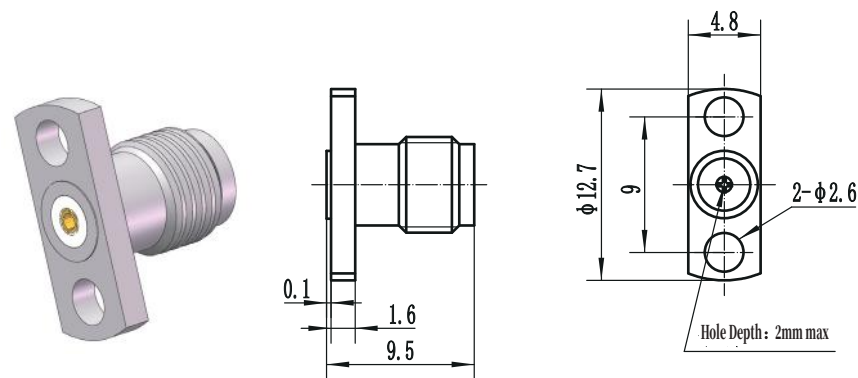
Accepts PIN DIA.	Model No.
Φ0.23mm	SMA-KFD13
Φ0.30mm	SMA-KFD14
Φ0.38mm	SMA-KFD15
Φ0.46mm	SMA-KFD16
Φ0.51mm	SMA-KFD17
Φ0.90mm	SMA-KFD18



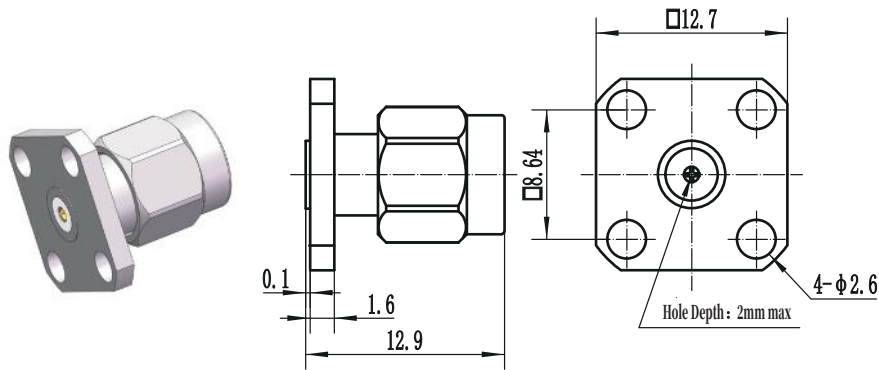
Accepts PIN DIA.	Model No.
Φ0.23mm	SMA-KFD19
Φ0.30mm	SMA-KFD20
Φ0.38mm	SMA-KFD21
Φ0.46mm	SMA-KFD22
Φ0.51mm	SMA-KFD23
Φ0.90mm	SMA-KFD24



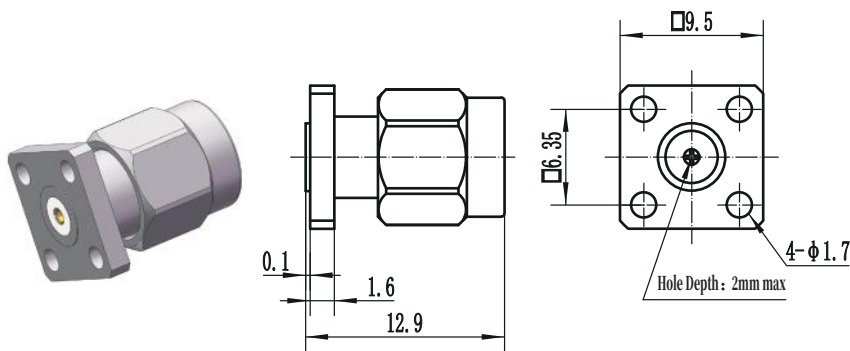
Accepts PIN DIA.	Model No.
Φ0.23mm	SMA-KFD25
Φ0.30mm	SMA-KFD26
Φ0.38mm	SMA-KFD27
Φ0.46mm	SMA-KFD28
Φ0.51mm	SMA-KFD29
Φ0.90mm	SMA-KFD30



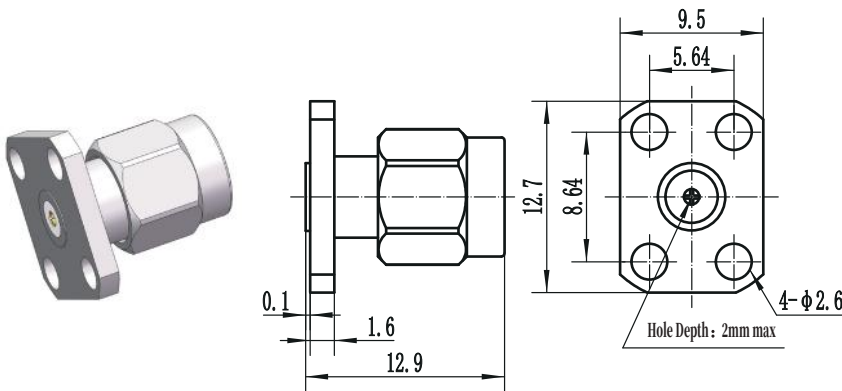
Accepts PIN DIA.	Model No.
Φ0.23mm	SMA-KFD31
Φ0.30mm	SMA-KFD32
Φ0.38mm	SMA-KFD33
Φ0.46mm	SMA-KFD34
Φ0.51mm	SMA-KFD35
Φ0.90mm	SMA-KFD36



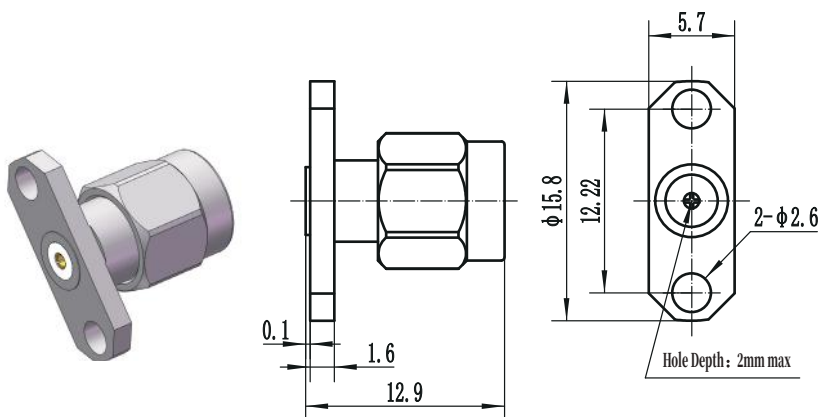
Accepts PIN DIA.	Model No.
Φ0.23mm	SMA-JFD1
Φ0.30mm	SMA-JFD2
Φ0.38mm	SMA-JFD3
Φ0.46mm	SMA-JFD4
Φ0.51mm	SMA-JFD5
Φ0.90mm	SMA-JFD6



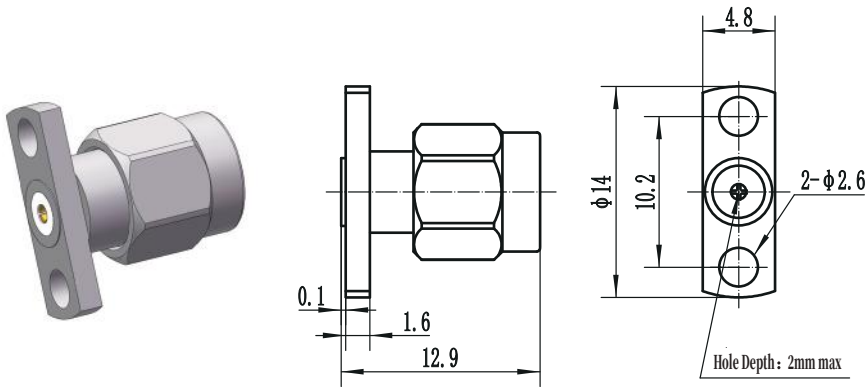
Accepts PIN DIA.	Model No.
Φ0.23mm	SMA-JFD7
Φ0.30mm	SMA-JFD8
Φ0.38mm	SMA-JFD9
Φ0.46mm	SMA-JFD10
Φ0.51mm	SMA-JFD11
Φ0.90mm	SMA-JFD12



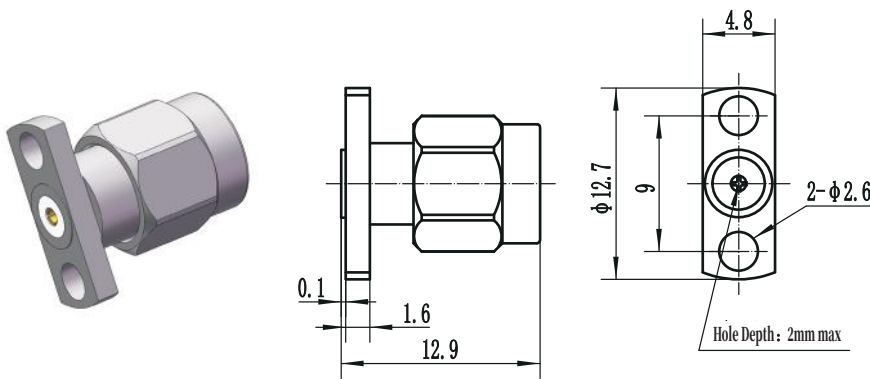
Accepts PIN DIA.	Model No.
Φ0.23mm	SMA-JFD13
Φ0.30mm	SMA-JFD14
Φ0.38mm	SMA-JFD15
Φ0.46mm	SMA-JFD16
Φ0.51mm	SMA-JFD17
Φ0.90mm	SMA-JFD18



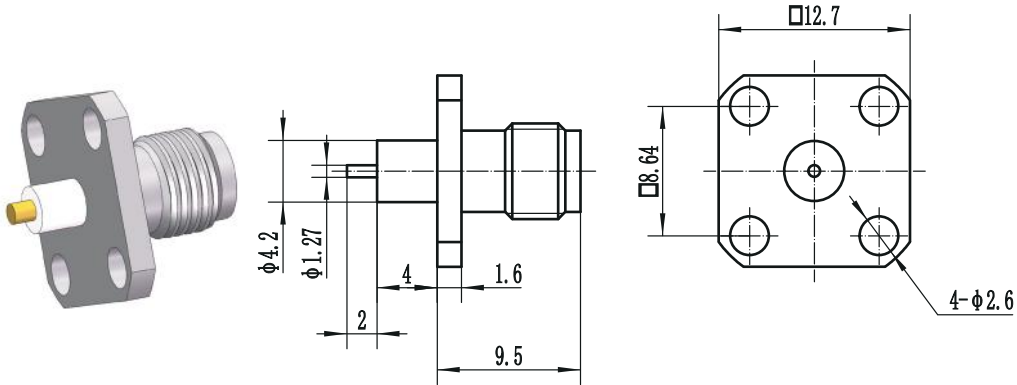
Accepts PIN DIA.	Model No.
Φ0.23mm	SMA-JFD19
Φ0.30mm	SMA-JFD20
Φ0.38mm	SMA-JFD21
Φ0.46mm	SMA-JFD22
Φ0.51mm	SMA-JFD23
Φ0.90mm	SMA-JFD24



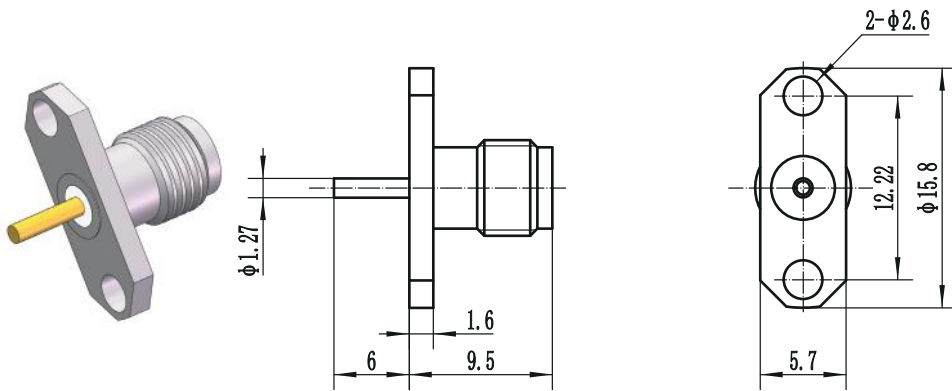
Accepts PIN DIA.	Model No.
Φ0.23mm	SMA-JFD25
Φ0.30mm	SMA-JFD26
Φ0.38mm	SMA-JFD27
Φ0.46mm	SMA-JFD28
Φ0.51mm	SMA-JFD29
Φ0.90mm	SMA-JFD30



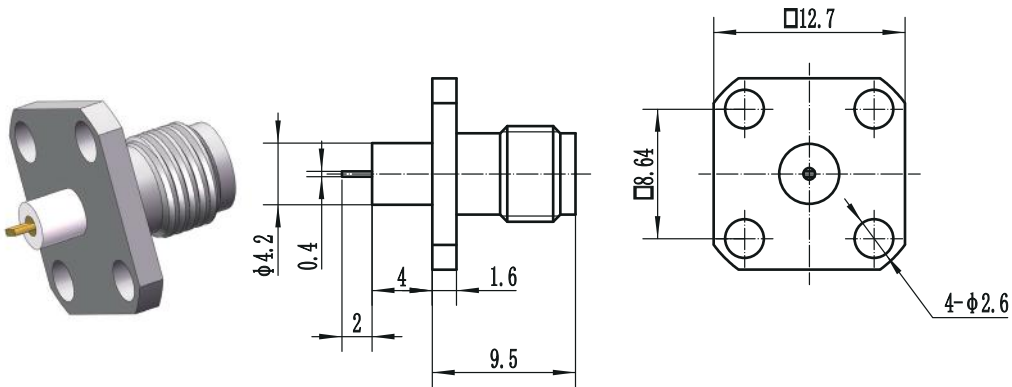
Accepts PIN DIA.	Model No.
Φ0.23mm	SMA-JFD31
Φ0.30mm	SMA-JFD32
Φ0.38mm	SMA-JFD33
Φ0.46mm	SMA-JFD34
Φ0.51mm	SMA-JFD35
Φ0.90mm	SMA-JFD36



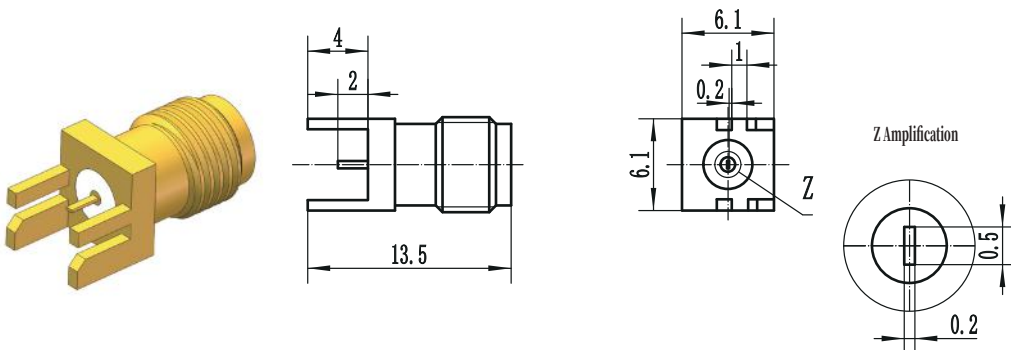
Model No.
SMA-KFD37



Model No.
SMA-KFD38



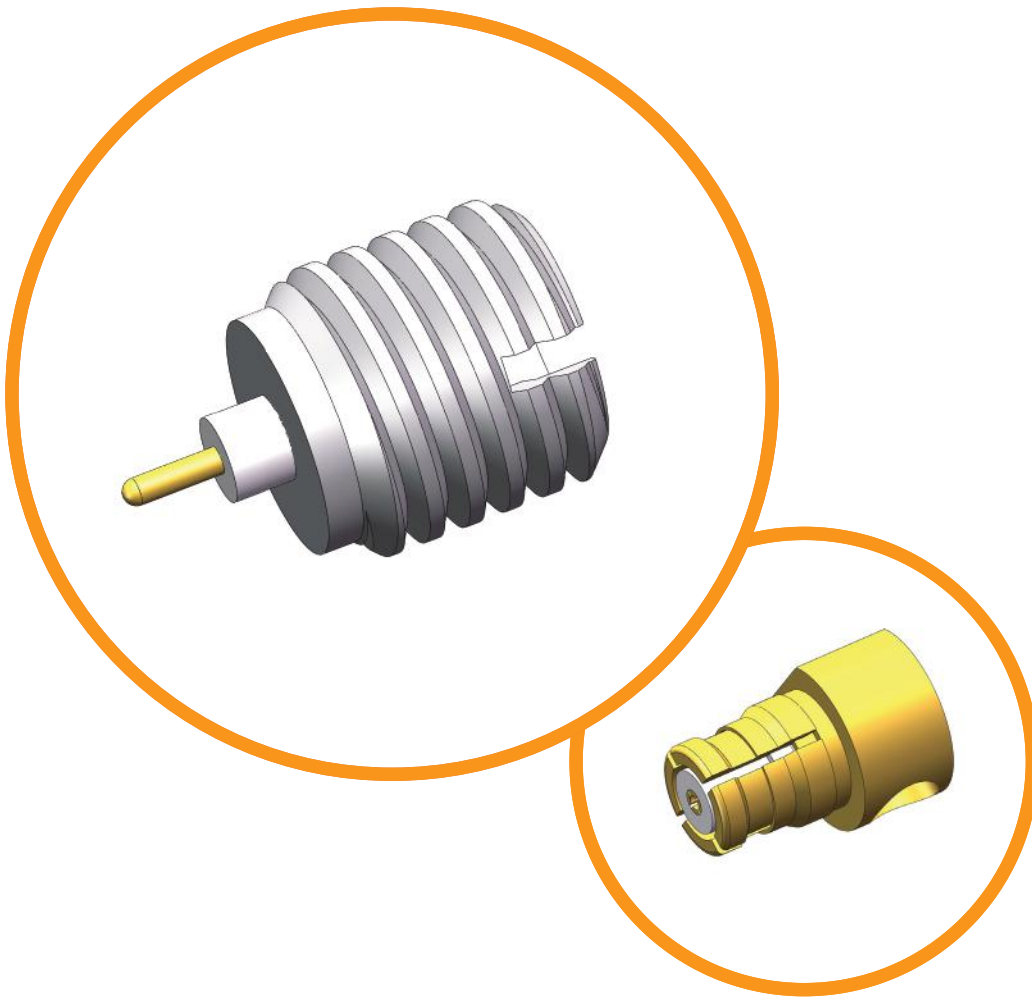
Model No.
SMA-KFD39



Model No.
SMA-KHD1

SMP

DC to 40 GHz



Low VSWR

Ultra-low loss

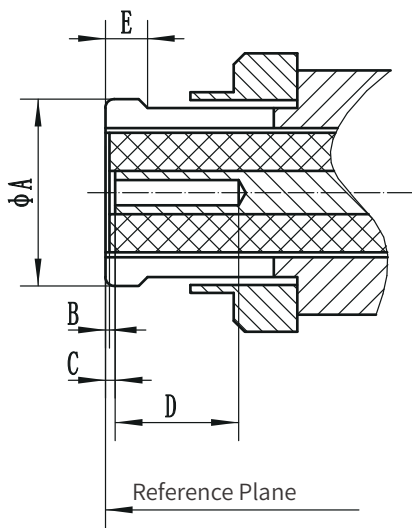
Durable & rugged

Extremely long service life

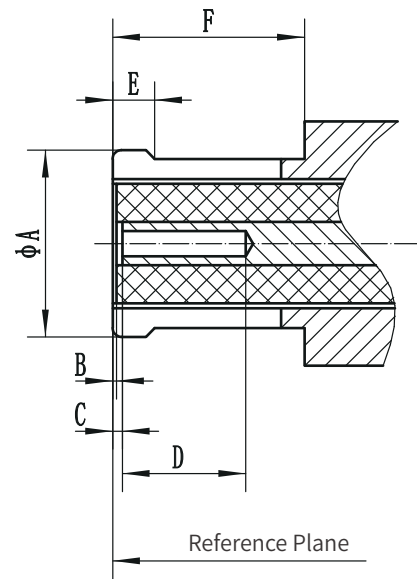
SMP Connector

Electrical Data	Impedance	50 Ω	
	Frequency Range	DC ~ 40 GHz	
	VSWR	1.3 (Typical)	
	IL	$\leq 0.06 \sqrt{F(\text{GHz})}$ dB	
	Contact Resistance	Center Contact	$\leq 6 \text{ m}\Omega$
		Outer Contact	$\leq 2.5 \text{ m}\Omega$
	Insulation Resistance	$\geq 5000 \text{ M}\Omega$	
	Dielectric Withstanding Voltage	$\geq 500 \text{ Vrms}$	
Environmental Data	Temperature Range	-55C° ~+ 165C°	
Material / Plating	Bodies, Outer Contacts	Beryllium Copper, Brass / Gold; Stainless Steel / Passivated	
	Center Contacts	Beryllium Copper, Brass / Gold	
	Insulators	PTFE, Glass	

Interface Dimensions



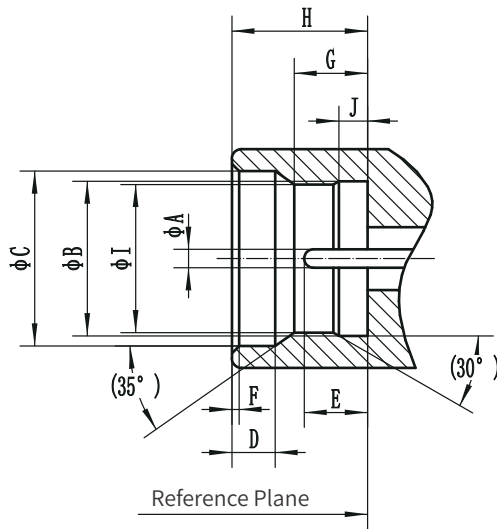
Interface of matching cable connector



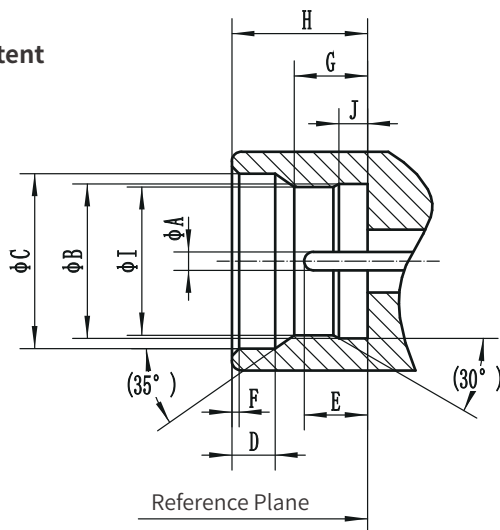
Interface without cable connector

Jack (female)		
	Min (mm)	Max (mm)
A		3.43
B	---(0.00)	
C		0.20
D	0.00	-
E	1.78	0.89
F	0.64	

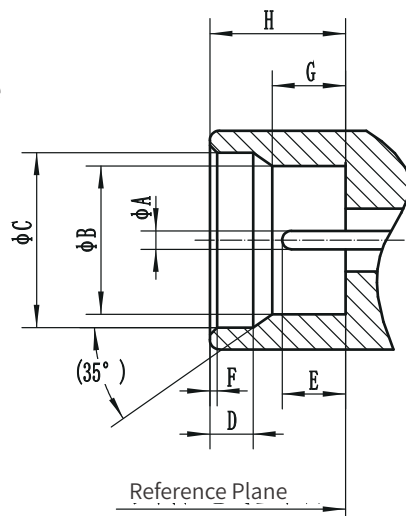
Jack (female)		
	Min (mm)	Max (mm)
A	-	3.43
B	---(0.00)	
C	0.00	0.20
D	1.78	-
E	0.64	0.89
F	2.84	-

Full Detent

Plug (male)

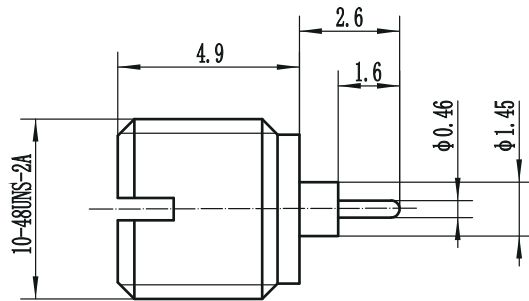
	Min (mm)	Max (mm)
A	0.36	0.41
B	3.15	3.20
C	3.53	3.68
D	0.84	0.94
E	1.14	1.40
F	0.08	0.20
G	1.30	1.45
H	2.74	2.84
I	2.90	3.00
J	0.521	0.597

Limited Detent

Plug (male)

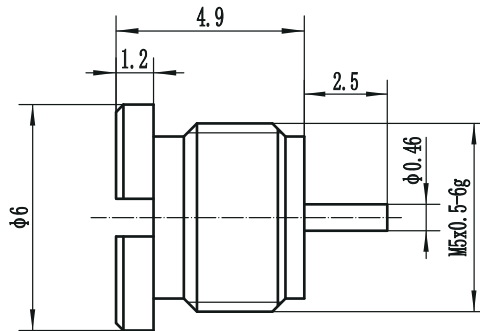
	Min (mm)	Max (mm)
A	0.36	0.41
B	3.15	3.20
C	3.53	3.68
D	0.84	0.94
E	1.14	1.40
F	0.08	0.20
G	1.37	1.52
H	2.74	2.84
I	3.00	3.10
J	0.521	0.597

Smooth Bore

Plug (male)

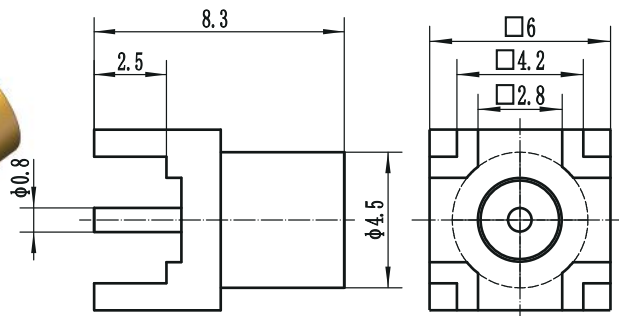
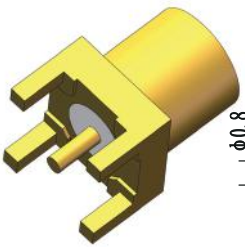
	Min (mm)	Max (mm)
A	0.36	0.41
B	3.12	3.23
C	3.53	3.68
D	0.84	0.94
E	1.14	1.40
F	0.08	0.20
G	1.50	1.65
H	2.74	2.84



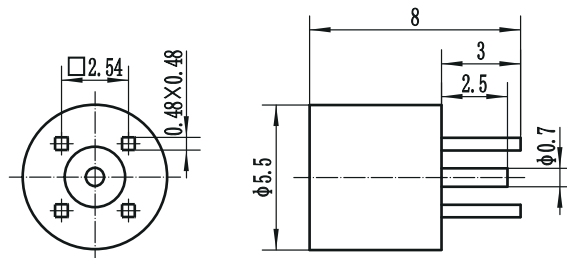
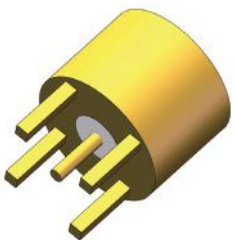
Model No.	Remarks
SMP-JYD1-S	Smooth Bore
SMP-JYD1-L	Limited Detent
SMP-JYD1-F	Full Detent



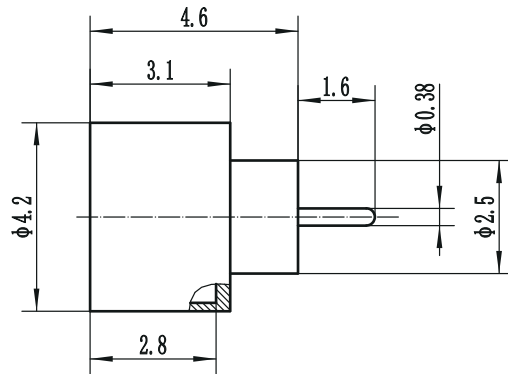
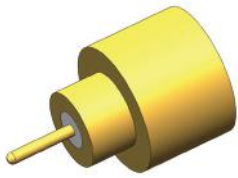
Model No.	Remarks
SMP-JYD2-S	Smooth Bore
SMP-JYD2-L	Limited Detent
SMP-JYD2-F	Full Detent



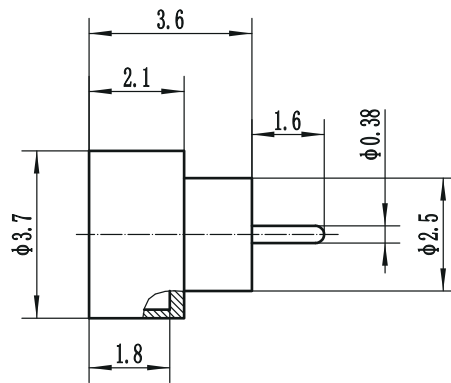
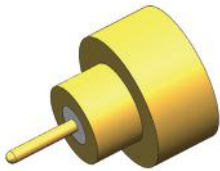
Model No.	Remarks
SMP-JHD1-S	Smooth Bore
SMP-JHD1-L	Limited Detent
SMP-JHD1-F	Full Detent



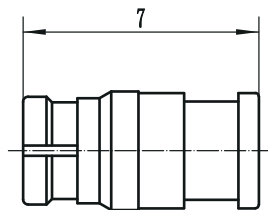
Model No.	Remarks
SMP-JHD2-S	Smooth Bore
SMP-JHD2-L	Limited Detent
SMP-JHD2-F	Full Detent



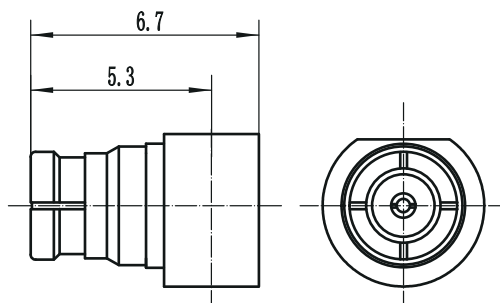
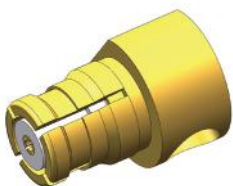
Model No.	Remarks
SMP(M)-JHD1-S	Smooth Bore
SMP(M)-JHD1-L	Limited Detent
SMP(M)-JHD1-F	Full Detent



Model No.	Remarks
SMP(M)-JHD2-S	Smooth Bore
SMP(M)-JHD2-L	Limited Detent
SMP(M)-JHD2-F	Full Detent

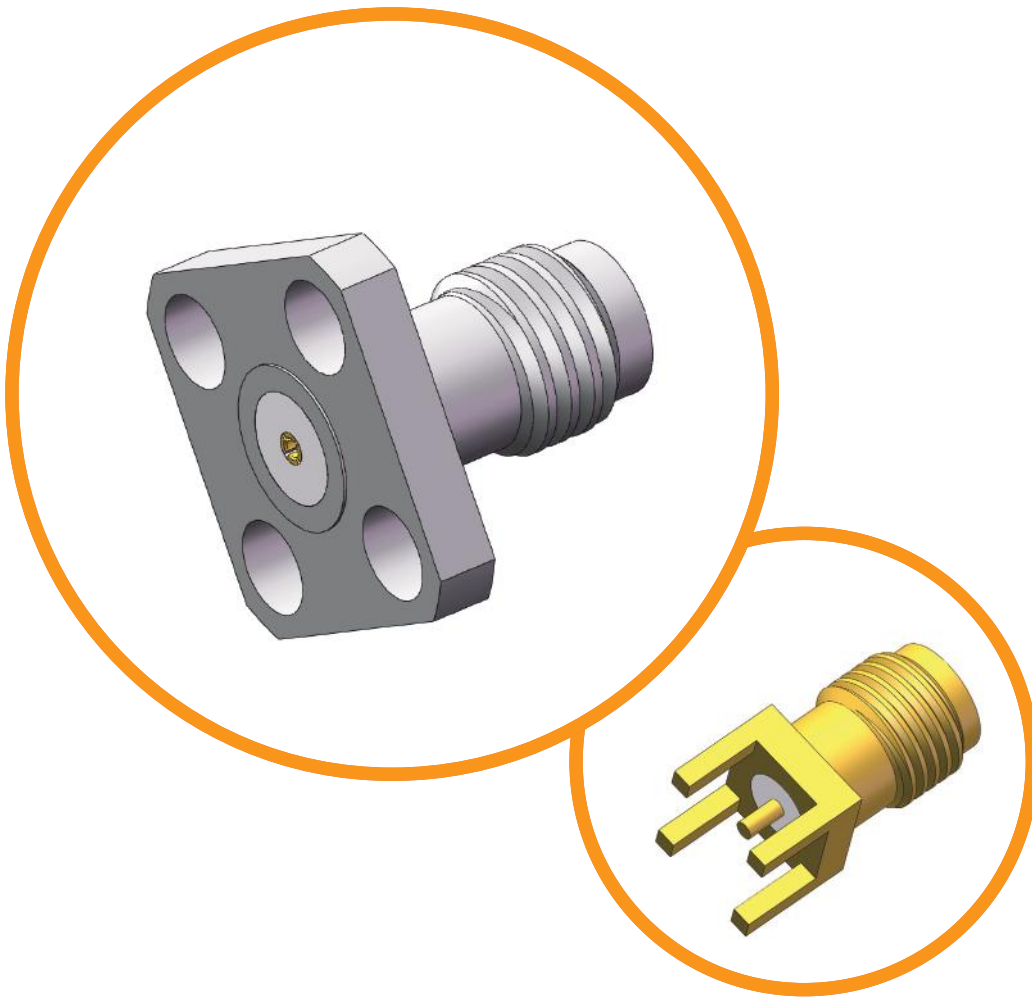


Model No.	Matching Cable
SMP-KB2-1	0.086" S/R Cable



Model No.	Matching Cable
SMP-KWB2-1	0.086" S/R Cable

SSMA DC to 36 GHz

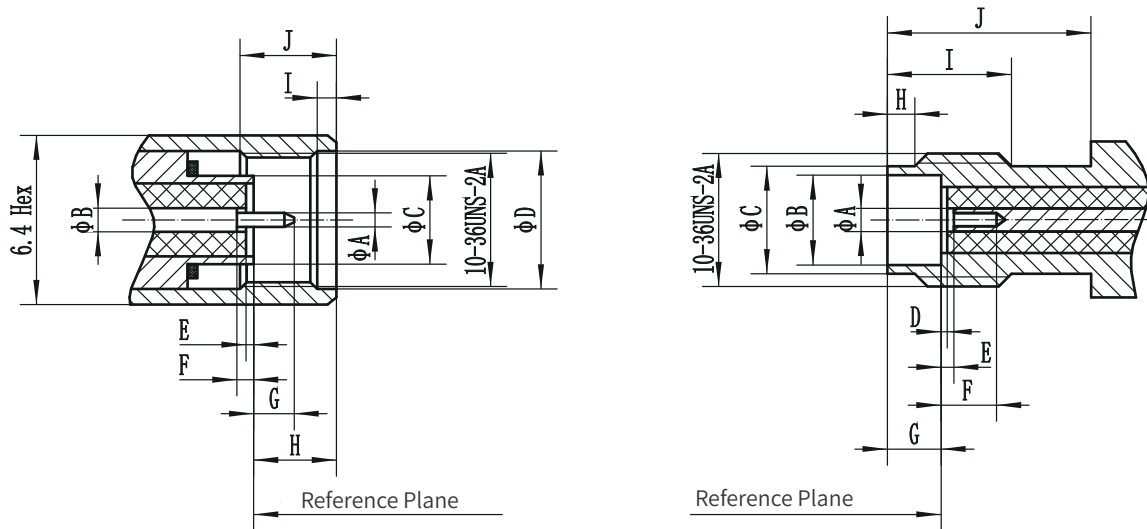


- Low VSWR
- Ultra-low loss
- Durable & rugged
- Extremely long service life

SSMA Connector

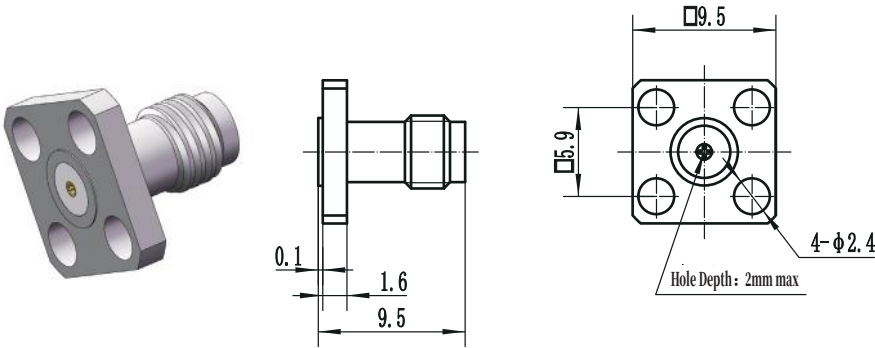
Electrical Data	Impedance	50 Ω
	Frequency Range	DC ~ 36 GHz
	VSWR	1.3 (Typical)
	IL	$\leq 0.06 \sqrt{F(\text{GHz})}$ dB
	Contact Resistance	Center Contact ≤ 4 m Ω Outer Contact ≤ 2.5 m Ω
	Insulation Resistance	≥ 5000 M Ω
	Dielectric Withstanding Voltage	≥ 500 Vrms
	Environmental Data	Temperature Range
Material / Plating	Bodies, Outer Contacts	Stainless Steel / Passivated; Brass / Gold, Nickel
	Center Contacts	Beryllium Copper, Brass / Gold
	Insulators	PTFE

Interface Dimensions

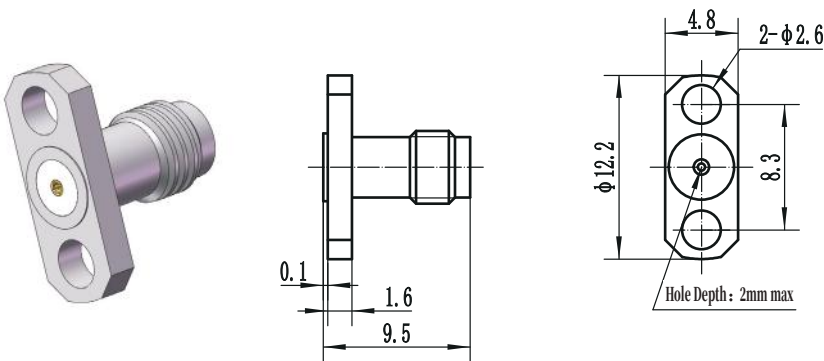


Plug (male)		
	Min (mm)	Max (mm)
A	0.50	0.53
B	0.85	0.88
C	3.15	3.22
D	4.98	5.13
E	0.00	0.25
F	0.00	0.25
G	1.27	1.65
H	2.54	3.38
I	0.38	1.14
J	3.30	-

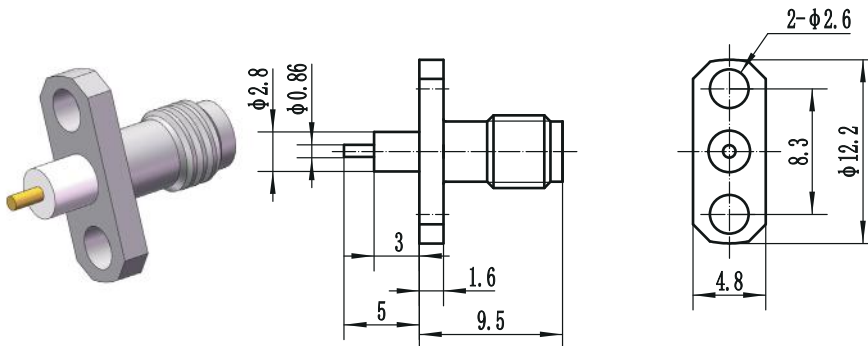
Jack (female)		
	Min (mm)	Max (mm)
A	0.85	0.88
B	3.23	3.30
C	3.73	4.06
D	0.00	0.25
E	0.00	0.25
F	1.91	-
G	1.91	1.96
H	0.51	1.02
I	4.32	-
J	5.84	-



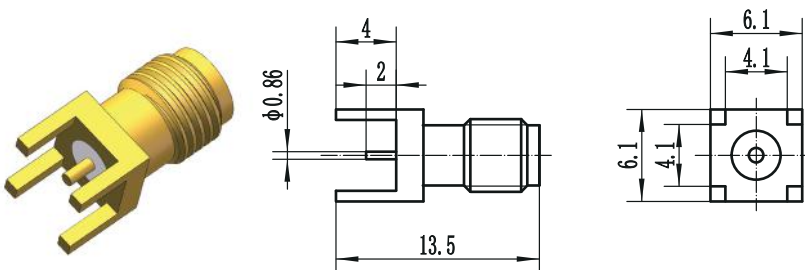
Accepts PIN DIA.	Model No.
Φ0.23mm	SSMA-KFD1
Φ0.30mm	SSMA-KFD2
Φ0.38mm	SSMA-KFD3
Φ0.46mm	SSMA-KFD4
Φ0.51mm	SSMA-KFD5
Φ0.90mm	SSMA-KFD6



Accepts PIN DIA.	Model No.
Φ0.23mm	SSMA-KFD7
Φ0.30mm	SSMA-KFD8
Φ0.38mm	SSMA-KFD9
Φ0.46mm	SSMA-KFD10
Φ0.51mm	SSMA-KFD11
Φ0.90mm	SSMA-KFD12

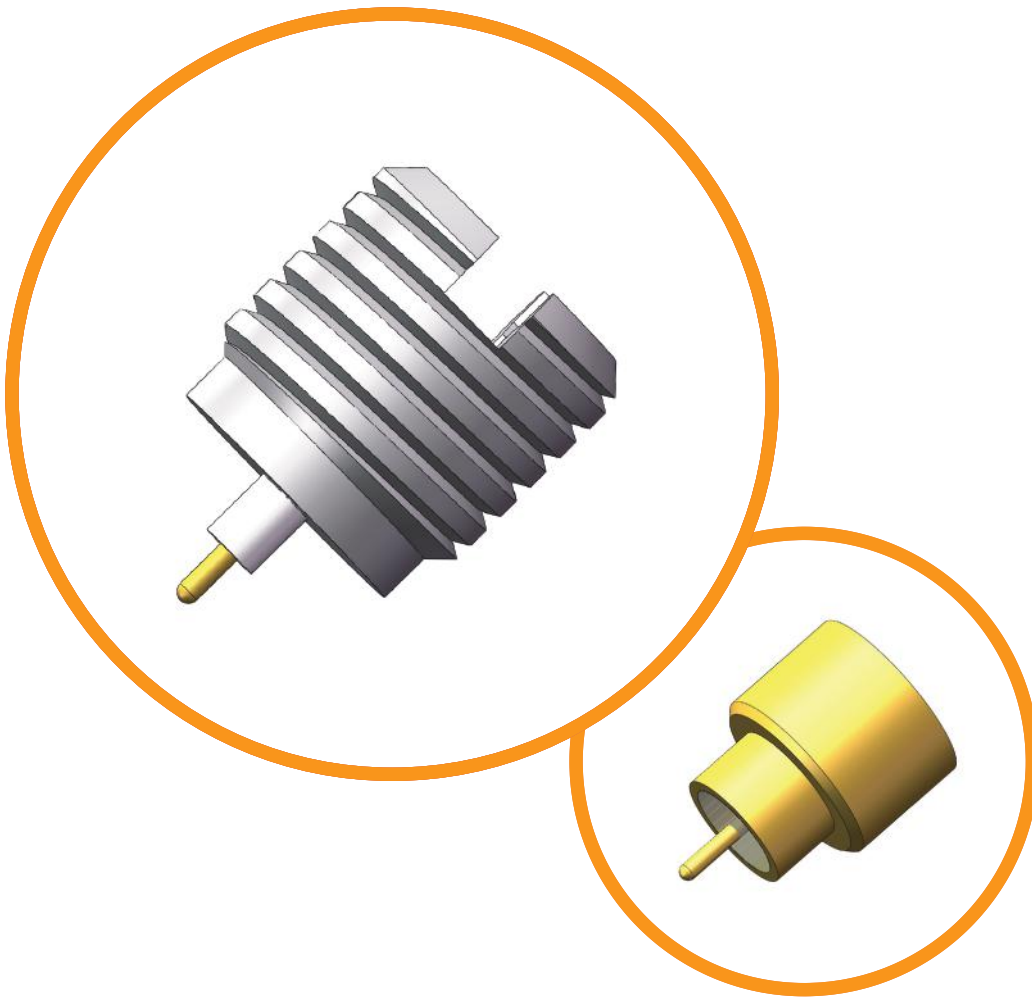


Model No.
SSMA-KFD13



Model No.
SSMA-KHD1

SSMP DC to 50 GHz

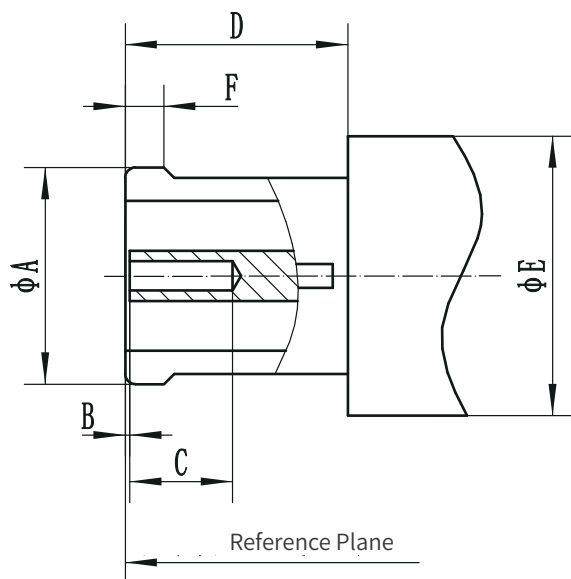


- Low VSWR
- Ultra-low loss
- Durable & rugged
- Extremely long service life

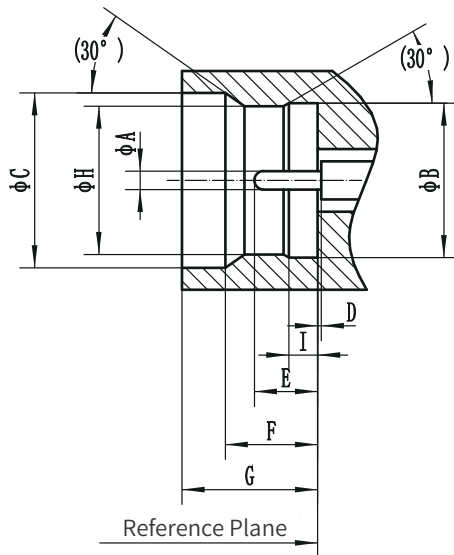
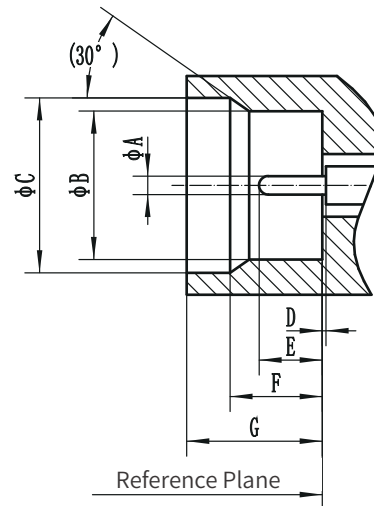
SSMP Connector

Electrical Data	Impedance	50 Ω	
	Frequency Range	DC ~ 50 GHz	
	VSWR	1.25 (Typical)	
	IL	$\leq 0.06 \sqrt{F(\text{GHz})}$ dB	
	Contact Resistance	Center Contact	$\leq 6 \text{ m}\Omega$
		Outer Contact	$\leq 2.5 \text{ m}\Omega$
	Insulation Resistance	$\geq 5000 \text{ M}\Omega$	
	Dielectric Withstanding Voltage	$\geq 325 \text{ Vrms}$	
Environmental Data	Temperature Range	-55°C ~+ 165°C	
Material / Plating	Bodies, Outer Contacts	Beryllium Copper, Brass / Gold; Stainless Steel / Passivated	
	Center Contacts	Beryllium Copper, Brass / Gold	
	Insulators	PTFE, Glass	

Interface Dimensions

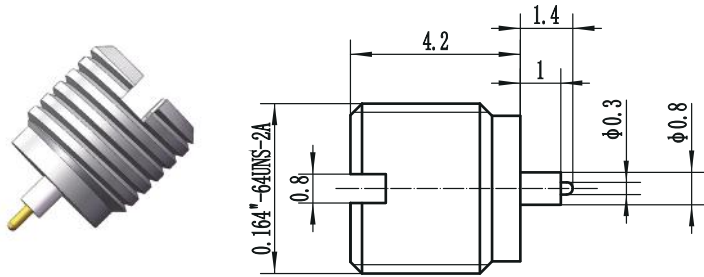


Jack (female)		
	Min (mm)	Max (mm)
A	-	2.41
B	0.00	0.20
C	1.27	-
D	1.73	-
E	-	2.79
F	-	0.58

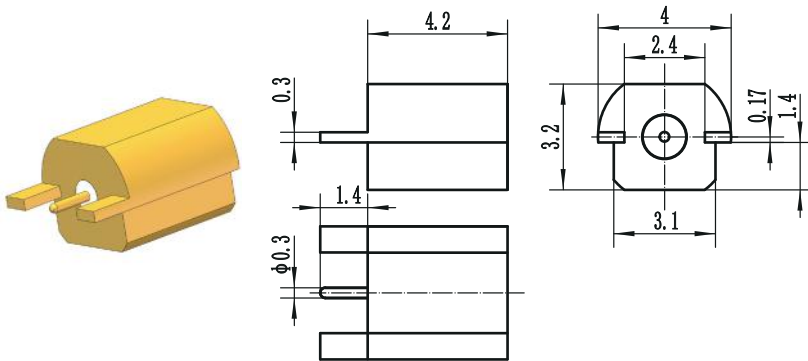
Full Detent

Smooth Bore


Plug (male)		
	Min (mm)	Max (mm)
A	0.28	0.33
B	2.18	2.24
C	2.82	2.92
D	0.00	----
E	0.76	1.14
F	1.57	1.83
G	2.08	2.13
H	2.11	2.16
I	0.53	0.58

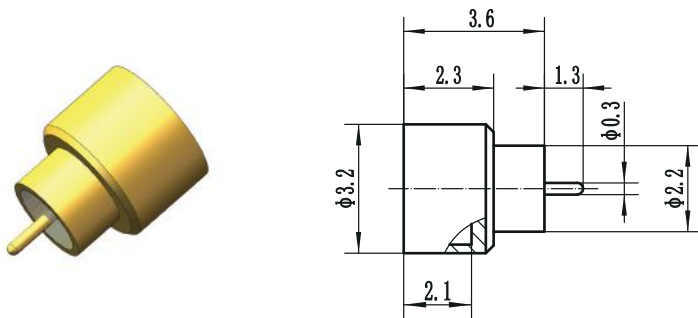
Plug (male)		
	Min (mm)	Max (mm)
A	0.28	0.33
B	2.18	2.24
C	2.82	2.92
D	0.00	----
E	0.76	1.14
F	1.57	1.83
G	2.08	2.13



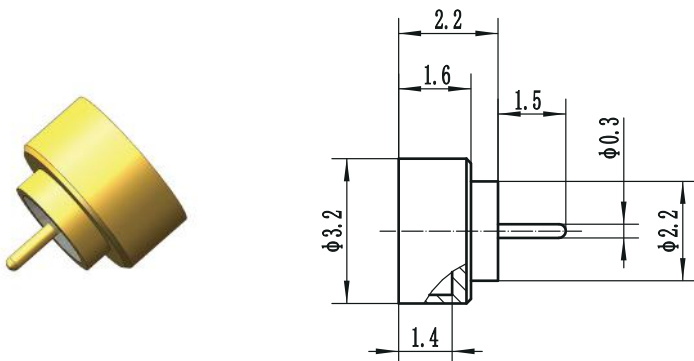
Model No.	Remarks
SSMP-JYD1-S	Smooth Bore
SSMP-JYD1-F	Full Detent



Model No.	Remarks
SSMP-JHD1-S	Smooth Bore
SSMP-JHD1-F	Full Detent



Model No.	Remarks
SSMP(M)-JHD1-S	Smooth Bore
SSMP(M)-JHD1-F	Full Detent



Model No.	Remarks
SSMP(M)-JHD2-S	Smooth Bore
SSMP(M)-JHD2-F	Full Detent