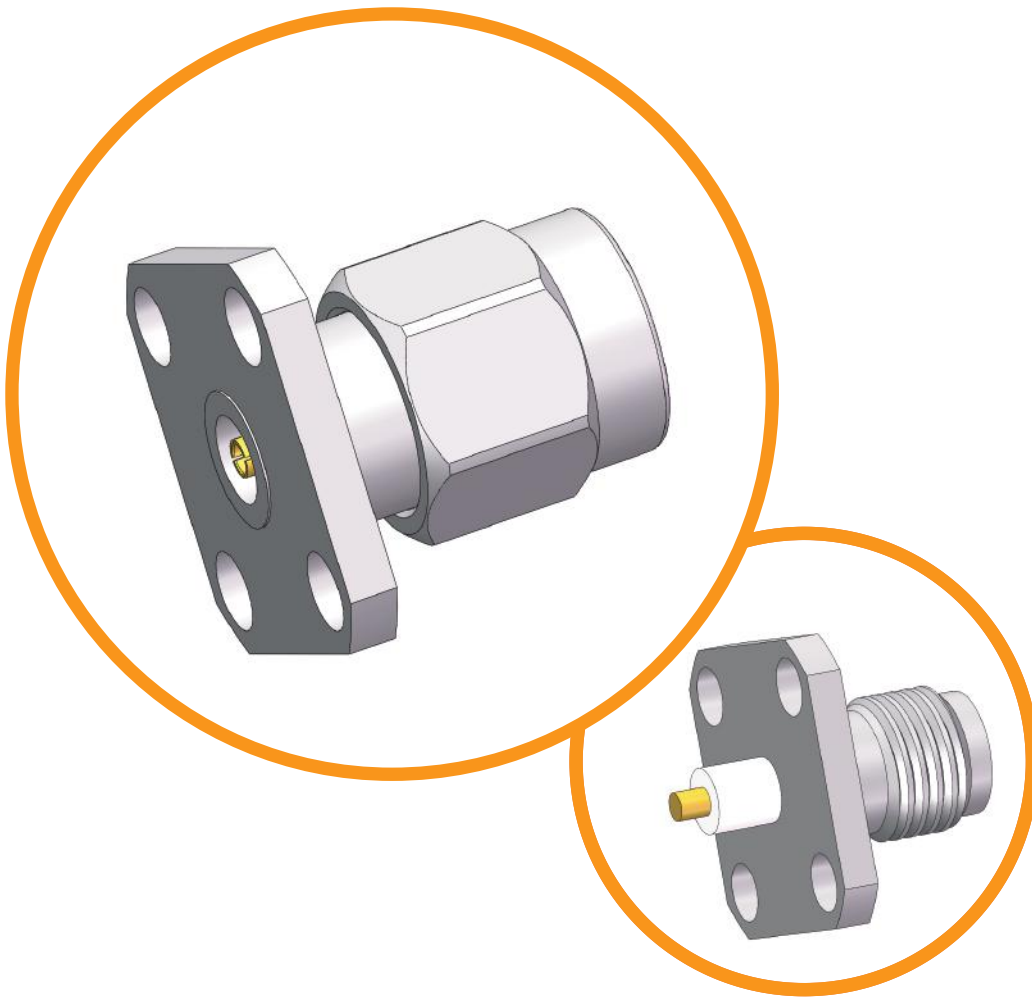


# 3.5mm DC to 26.5 GHz

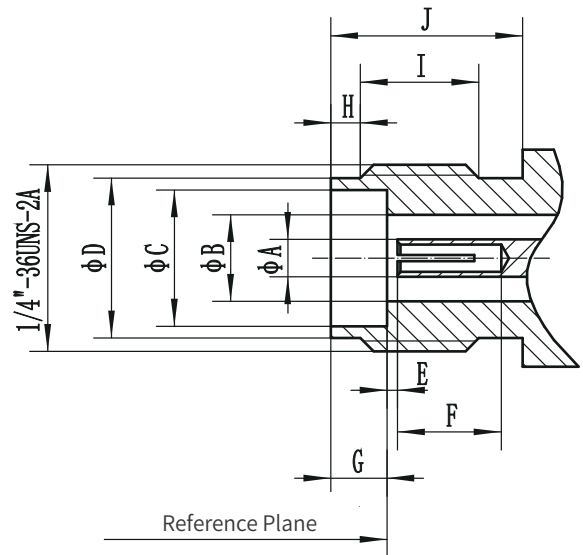
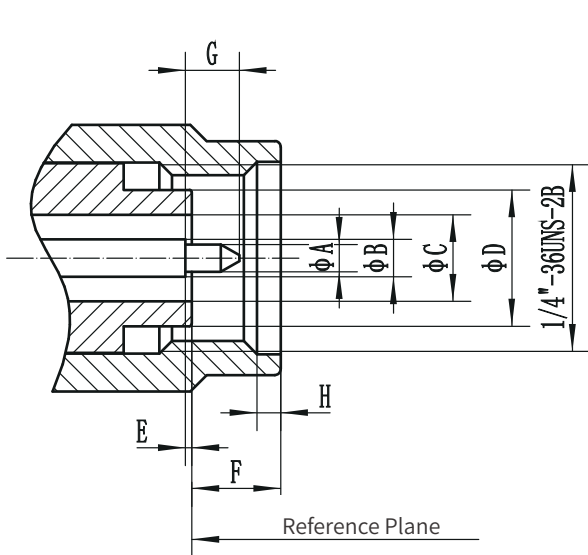


- Low VSWR
- Ultra-low loss
- Durable & rugged
- Extremely long service life

## 3.5mm Connector

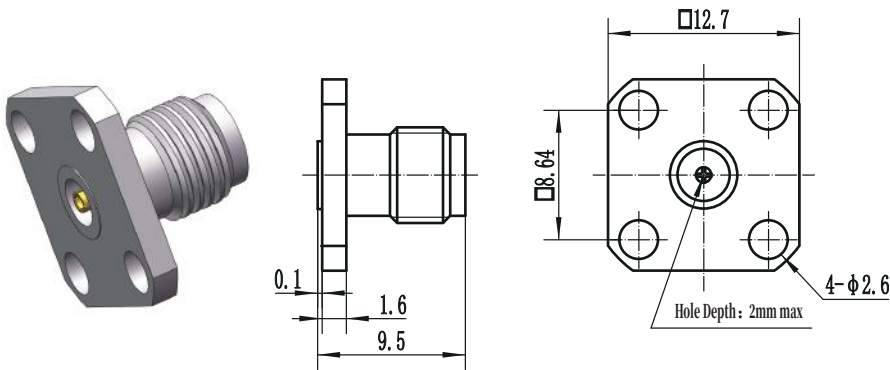
<b>Electrical Data</b>	Impedance	50 $\Omega$
	Frequency Range	DC ~ 26.5 GHz
	VSWR	1.2 ( Typical )
	IL	$\leq 0.06 \sqrt{F(\text{GHz})}$ dB
	Contact Resistance	Center Contact $\leq 3 \text{ m}\Omega$ Outer Contact $\leq 2 \text{ m}\Omega$
	Insulation Resistance	$\geq 5000 \text{ M}\Omega$
	Dielectric Withstanding Voltage	$\geq 500 \text{ Vrms}$
	<b>Environmental Data</b>	Temperature Range
<b>Material / Plating</b>	Bodies, Outer Contacts	Stainless Steel / Passivated; Brass / Gold, Nickel
	Center Contacts	Beryllium Copper, Brass / Gold
	Insulators	PEI, PTFE

## Interface Dimensions

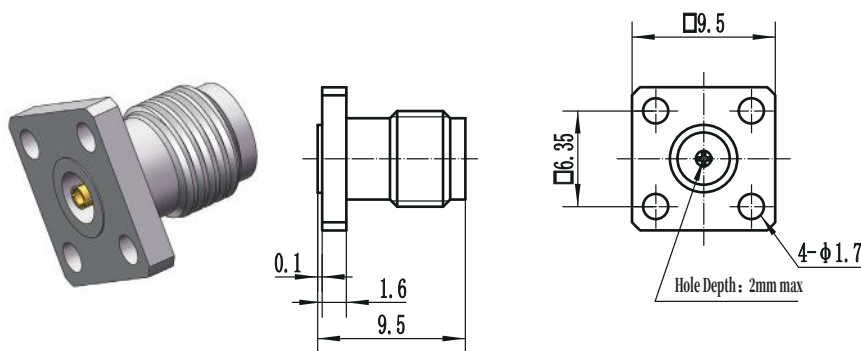


Plug ( male )		
	Min ( mm )	Max ( mm )
A	0.92	0.93
B	1.509	1.519
C	3.49	3.51
D	4.55	4.58
E	0.00	0.08
F	2.36	3.43
G	2.03	2.29
H	0.38	1.14

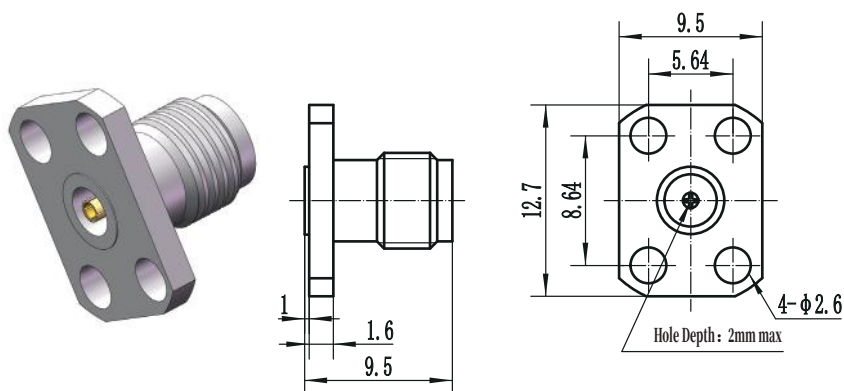
Jack ( female )		
	Min ( mm )	Max ( mm )
A	1.509	1.519
B	3.49	3.51
C	4.60	4.63
D	5.3	5.4
E	0.00	0.08
F	2.79	3.18
G	1.88	1.98
H	0.38	1.14
I	3.35	4.62
J	5.54	-



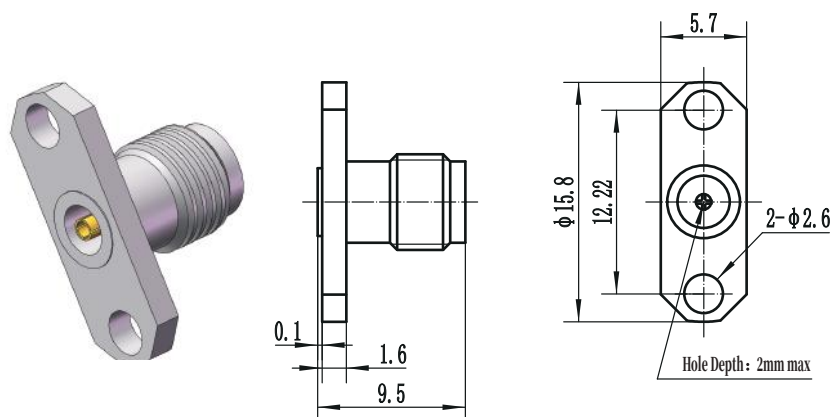
Accepts PIN DIA.	Model No.
Φ0.23mm	3.5-KFD1
Φ0.30mm	3.5-KFD2
Φ0.38mm	3.5-KFD3
Φ0.46mm	3.5-KFD4
Φ0.51mm	3.5-KFD5
Φ0.90mm	3.5-KFD6



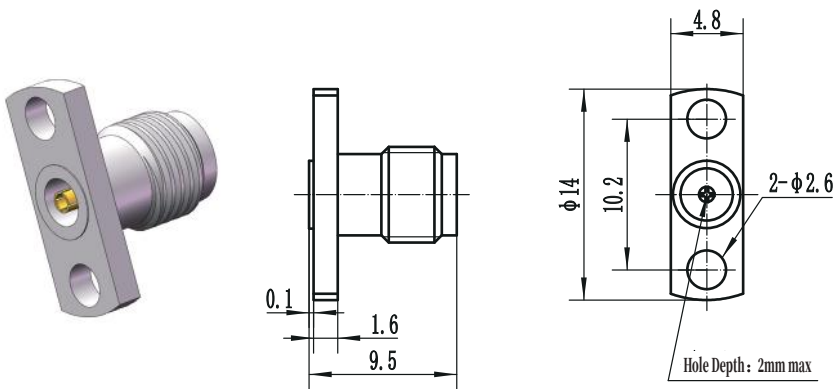
Accepts PIN DIA.	Model No.
Φ0.23mm	3.5-KFD7
Φ0.30mm	3.5-KFD8
Φ0.38mm	3.5-KFD9
Φ0.46mm	3.5-KFD10
Φ0.51mm	3.5-KFD11
Φ0.90mm	3.5-KFD12



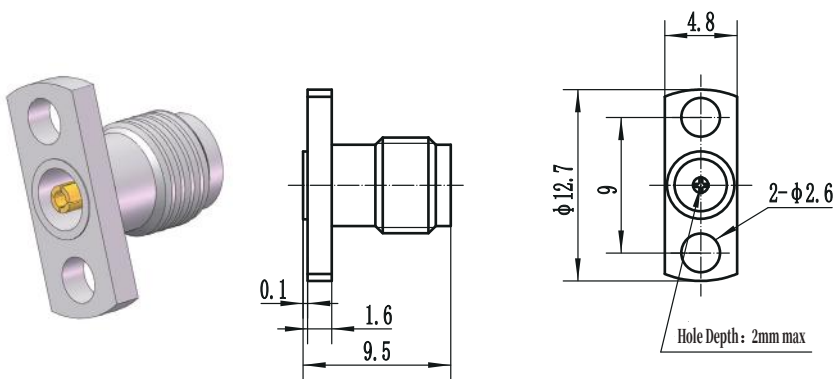
Accepts PIN DIA.	Model No.
Φ0.23mm	3.5-KFD13
Φ0.30mm	3.5-KFD14
Φ0.38mm	3.5-KFD15
Φ0.46mm	3.5-KFD16
Φ0.51mm	3.5-KFD17
Φ0.90mm	3.5-KFD18



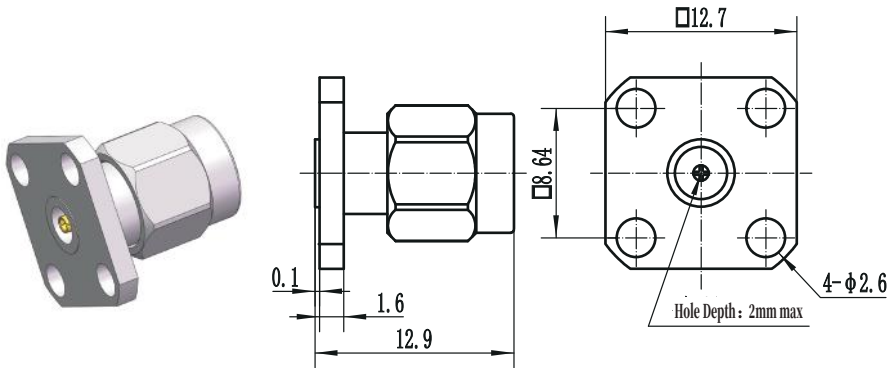
Accepts PIN DIA.	Model No.
Φ0.23mm	3.5-KFD19
Φ0.30mm	3.5-KFD20
Φ0.38mm	3.5-KFD21
Φ0.46mm	3.5-KFD22
Φ0.51mm	3.5-KFD23
Φ0.90mm	3.5-KFD24



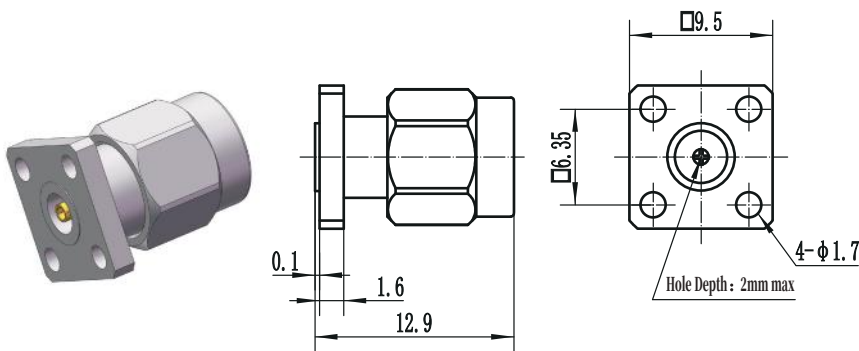
Accepts PIN DIA.	Model No.
Φ0.23mm	3.5-KFD25
Φ0.30mm	3.5-KFD26
Φ0.38mm	3.5-KFD27
Φ0.46mm	3.5-KFD28
Φ0.51mm	3.5-KFD29
Φ0.90mm	3.5-KFD30



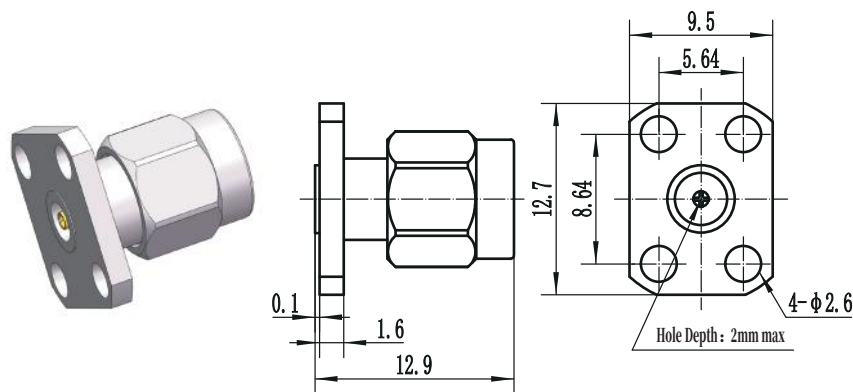
Accepts PIN DIA.	Model No.
Φ0.23mm	3.5-KFD31
Φ0.30mm	3.5-KFD32
Φ0.38mm	3.5-KFD33
Φ0.46mm	3.5-KFD34
Φ0.51mm	3.5-KFD35
Φ0.90mm	3.5-KFD36



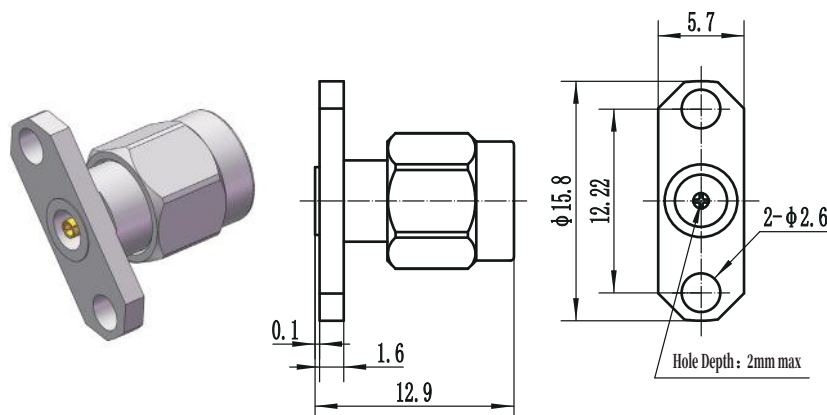
Accepts PIN DIA.	Model No.
Φ0.23mm	3.5-JFD1
Φ0.30mm	3.5-JFD2
Φ0.38mm	3.5-JFD3
Φ0.46mm	3.5-JFD4
Φ0.51mm	3.5-JFD5
Φ0.90mm	3.5-JFD6



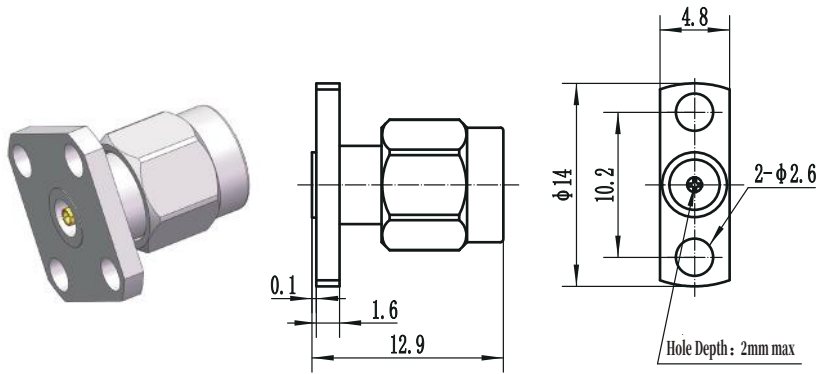
Accepts PIN DIA.	Model No.
Φ0.23mm	3.5-JFD7
Φ0.30mm	3.5-JFD8
Φ0.38mm	3.5-JFD9
Φ0.46mm	3.5-JFD10
Φ0.51mm	3.5-JFD11
Φ0.90mm	3.5-JFD12



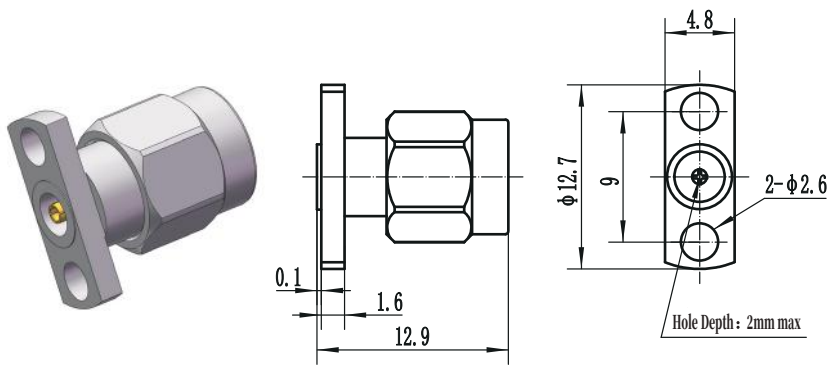
Accepts PIN DIA.	Model No.
Φ0.23mm	3.5-JFD13
Φ0.30mm	3.5-JFD14
Φ0.38mm	3.5-JFD15
Φ0.46mm	3.5-JFD16
Φ0.51mm	3.5-JFD17
Φ0.90mm	3.5-JFD18



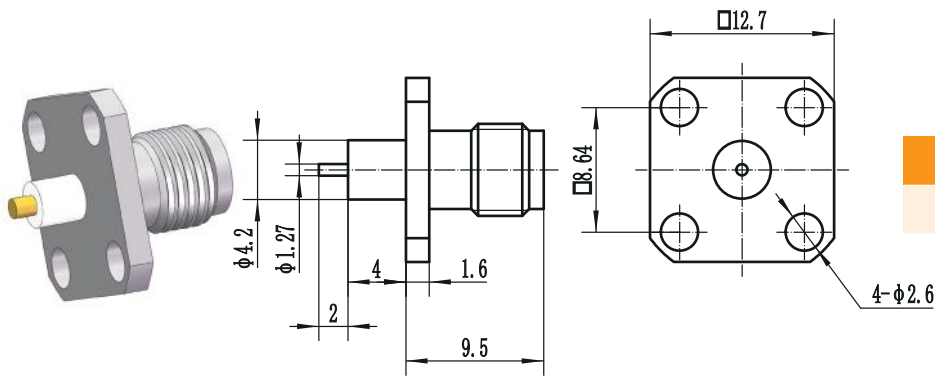
Accepts PIN DIA.	Model No.
Φ0.23mm	3.5-JFD19
Φ0.30mm	3.5-JFD20
Φ0.38mm	3.5-JFD21
Φ0.46mm	3.5-JFD22
Φ0.51mm	3.5-JFD23
Φ0.90mm	3.5-JFD24



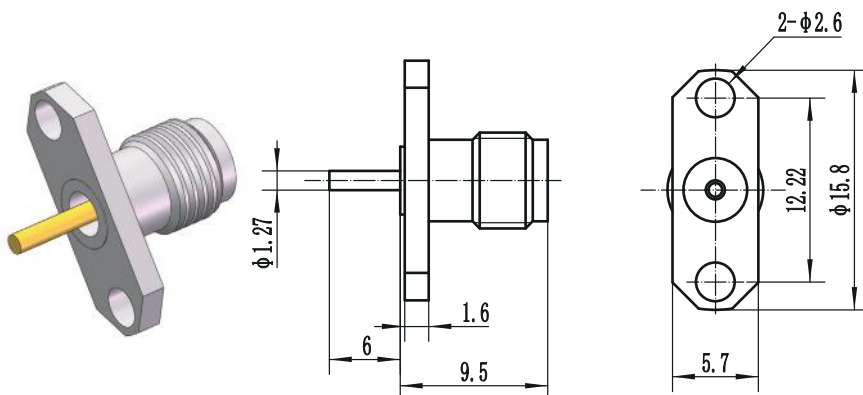
Accepts PIN DIA.	Model No.
Φ0.23mm	3.5-JFD25
Φ0.30mm	3.5-JFD26
Φ0.38mm	3.5-JFD27
Φ0.46mm	3.5-JFD28
Φ0.51mm	3.5-JFD29
Φ0.90mm	3.5-JFD30



Accepts PIN DIA.	Model No.
Φ0.23mm	3.5-JFD31
Φ0.30mm	3.5-JFD32
Φ0.38mm	3.5-JFD33
Φ0.46mm	3.5-JFD34
Φ0.51mm	3.5-JFD35
Φ0.90mm	3.5-JFD36



Model No.
3.5-KFD37



Model No.
3.5-KFD38