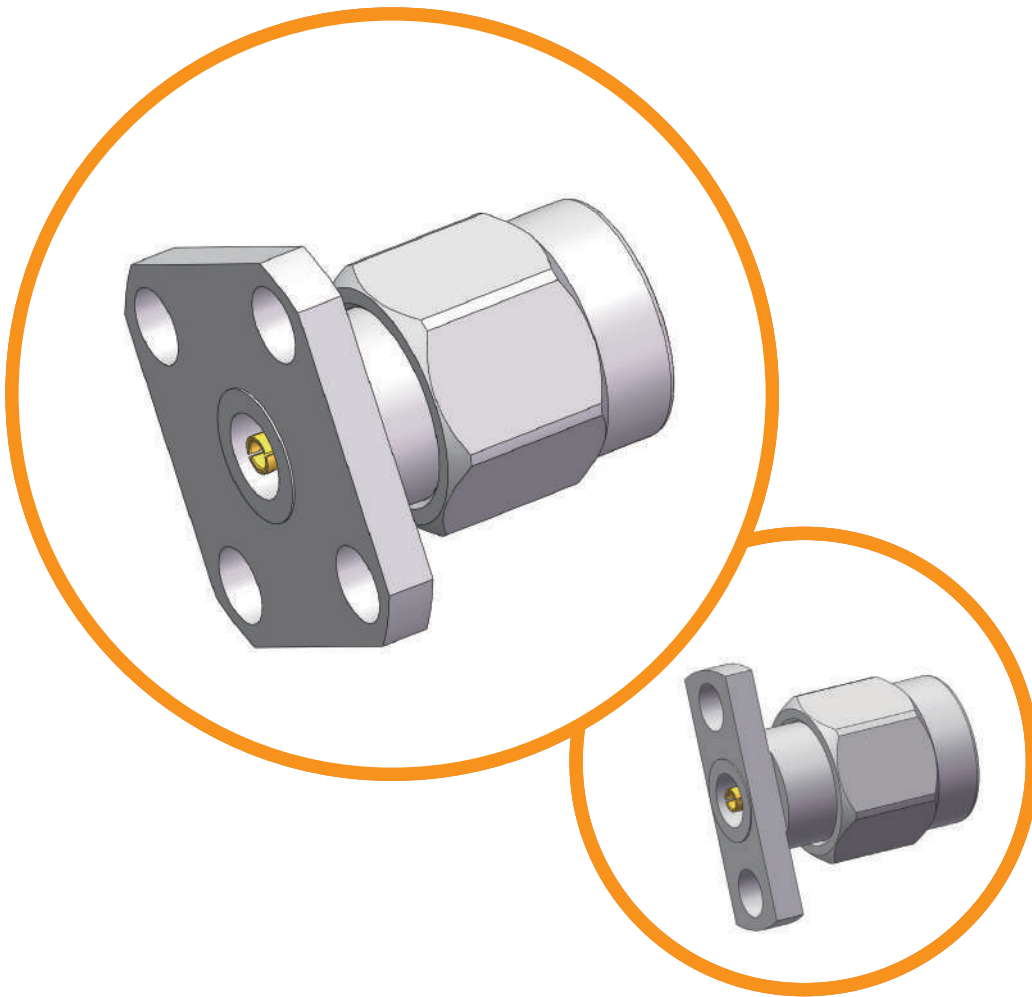


# 2.92mm DC to 40 GHz



Low VSWR

Ultra-low loss

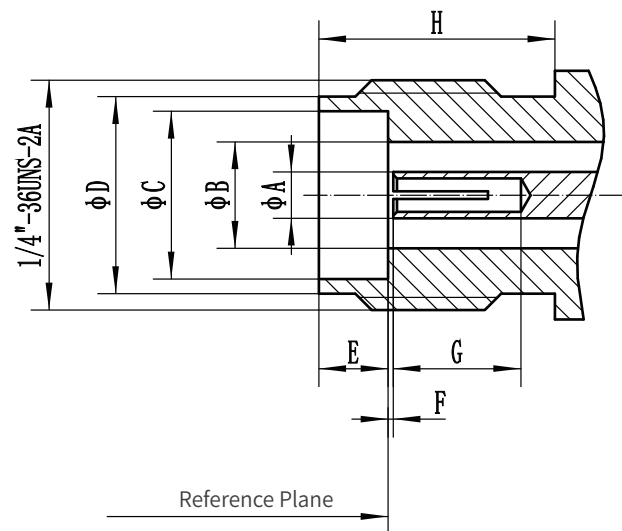
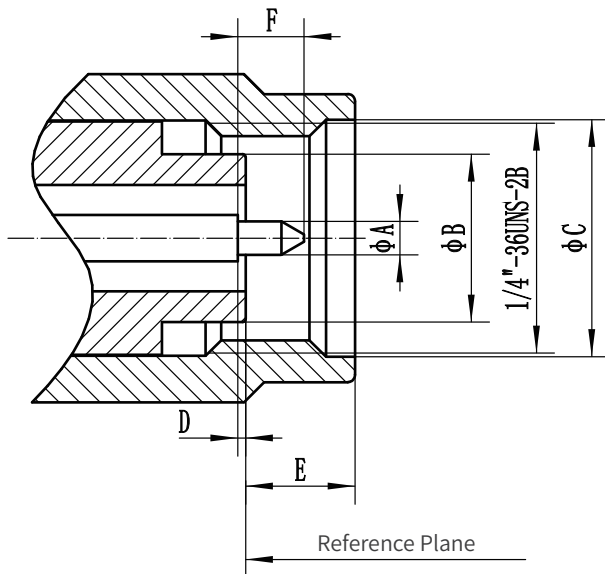
Durable & rugged

Extremely long service life

## 2.92mm Connector

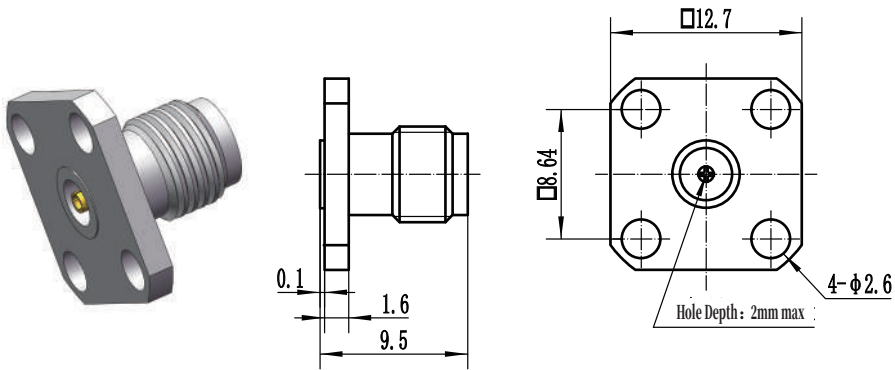
<b>Electrical Data</b>	Impedance	50 $\Omega$
	Frequency Range	DC ~ 40 GHz
	VSWR	1.2 ( Typical )
	IL	$\leq 0.06 \sqrt{F(\text{GHz})}$ dB
	Contact Resistance	Center Contact $\leq 4$ m $\Omega$ Outer Contact $\leq 2$ m $\Omega$
	Insulation Resistance	$\geq 5000$ M $\Omega$
	Dielectric Withstanding Voltage	$\geq 500$ Vrms
	<b>Environmental Data</b>	Temperature Range
<b>Material / Plating</b>	Bodies, Outer Contacts	Stainless Steel / Passivated; Brass / Gold, Nickel
	Center Contacts	Beryllium Copper, Brass / Gold
	Insulators	PEI, PTFE

## Interface Dimensions

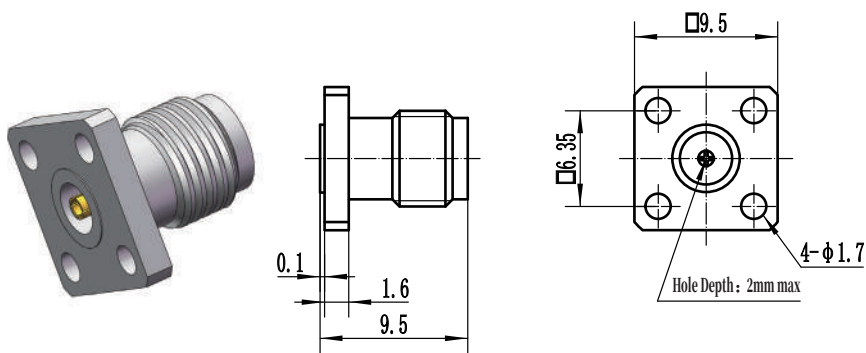


Plug ( male )		
	Min ( mm )	Max ( mm )
A	0.90	0.94
B	4.52	4.57
C	6.48	-
D	0.00	0.13
E	-	3.43
F	1.40	1.65

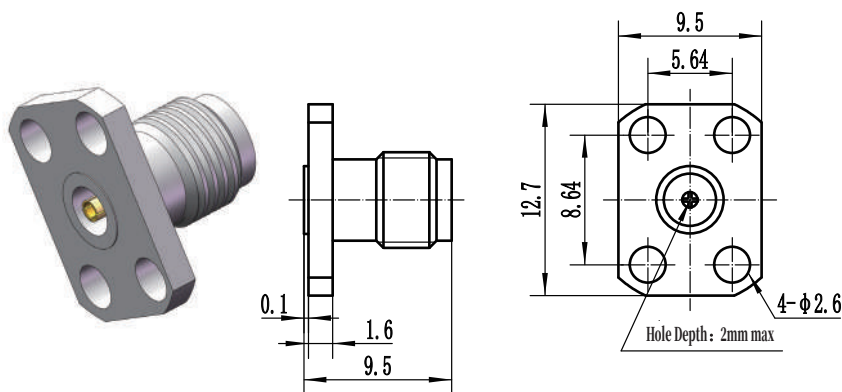
Jack ( female )		
	Min ( mm )	Max ( mm )
A	(1.27)	
B	2.90	2.95
C	4.60	4.65
D	5.23	5.44
E	1.88	1.98
F	0.00	0.13
G	2.67	-
H	5.54	-



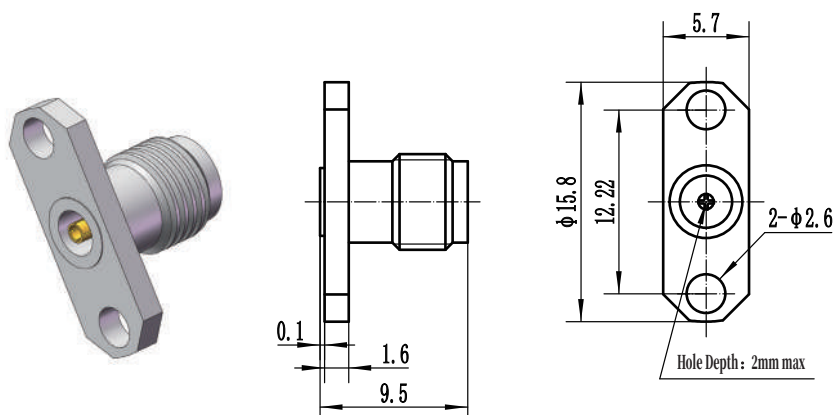
Accepts PIN DIA.	Model No.
$\phi$ 0.23mm	2.92-KFD1
$\phi$ 0.30mm	2.92-KFD2
$\phi$ 0.38mm	2.92-KFD3
$\phi$ 0.46mm	2.92-KFD4
$\phi$ 0.51mm	2.92-KFD5



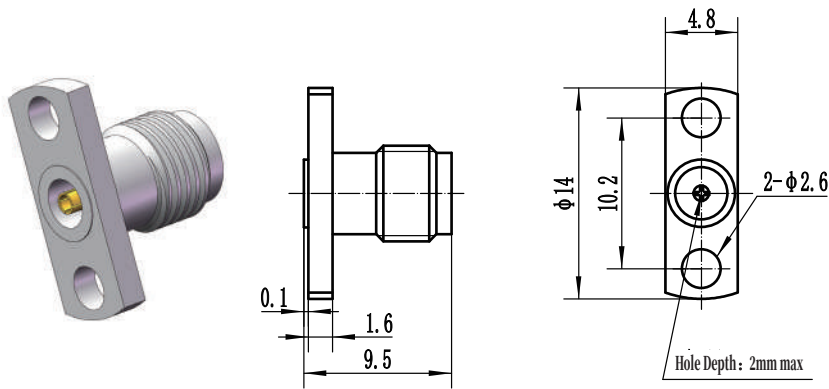
Accepts PIN DIA.	Model No.
$\phi$ 0.23mm	2.92-KFD6
$\phi$ 0.30mm	2.92-KFD7
$\phi$ 0.38mm	2.92-KFD8
$\phi$ 0.46mm	2.92-KFD9
$\phi$ 0.51mm	2.92-KFD10



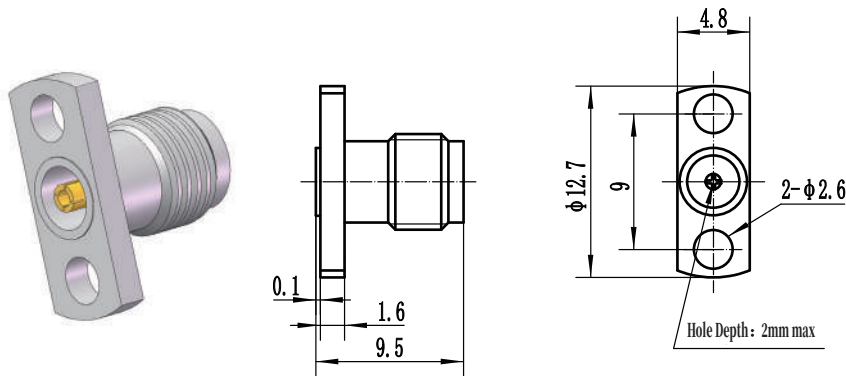
Accepts PIN DIA.	Model No.
$\phi$ 0.23mm	2.92-KFD11
$\phi$ 0.30mm	2.92-KFD12
$\phi$ 0.38mm	2.92-KFD13
$\phi$ 0.46mm	2.92-KFD14
$\phi$ 0.51mm	2.92-KFD15



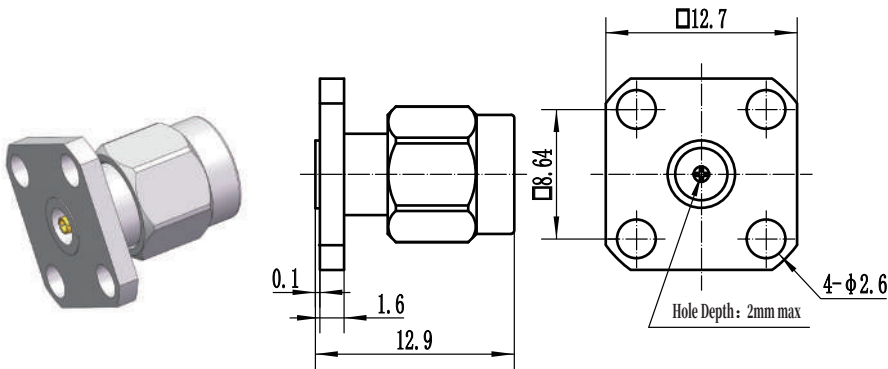
Accepts PIN DIA.	Model No.
$\phi$ 0.23mm	2.92-KFD16
$\phi$ 0.30mm	2.92-KFD17
$\phi$ 0.38mm	2.92-KFD18
$\phi$ 0.46mm	2.92-KFD19
$\phi$ 0.51mm	2.92-KFD20



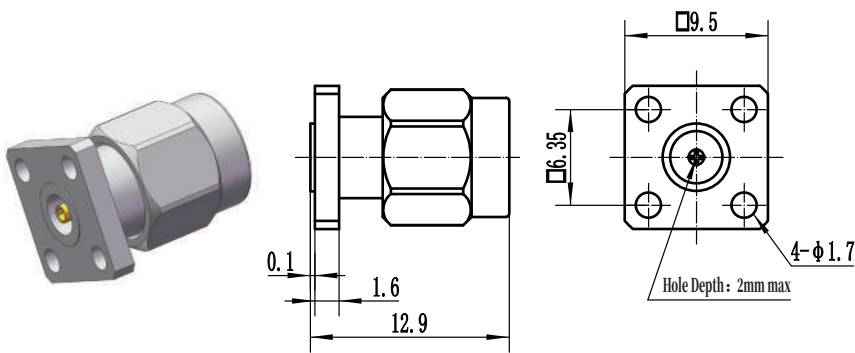
Accepts PIN DIA.	Model No.
Φ0.23mm	2.92-KFD21
Φ0.30mm	2.92-KFD22
Φ0.38mm	2.92-KFD23
Φ0.46mm	2.92-KFD24
Φ0.51mm	2.92-KFD25



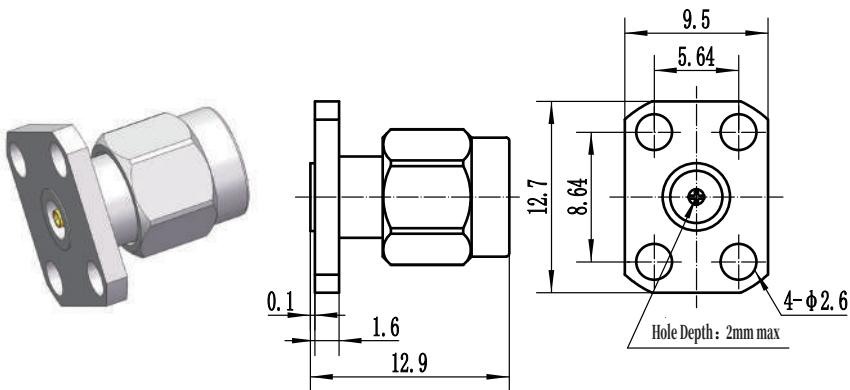
Accepts PIN DIA.	Model No.
Φ0.23mm	2.92-KFD26
Φ0.30mm	2.92-KFD27
Φ0.38mm	2.92-KFD28
Φ0.46mm	2.92-KFD29
Φ0.51mm	2.92-KFD30



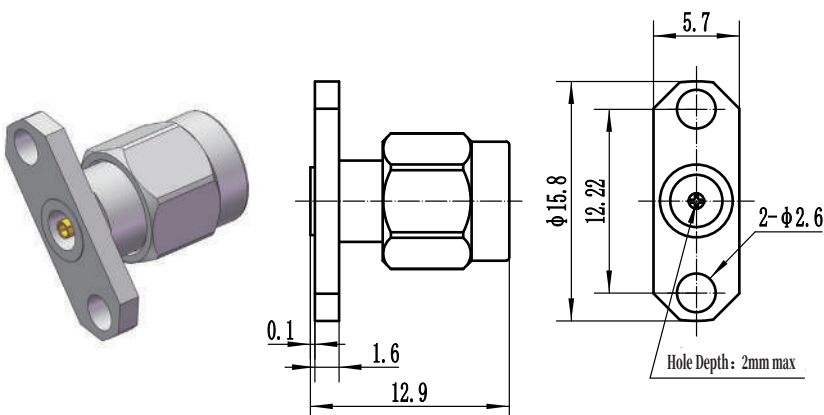
Accepts PIN DIA.	Model No.
Φ0.23mm	2.92-JFD1
Φ0.30mm	2.92-JFD2
Φ0.38mm	2.92-JFD3
Φ0.46mm	2.92-JFD4
Φ0.51mm	2.92-JFD5



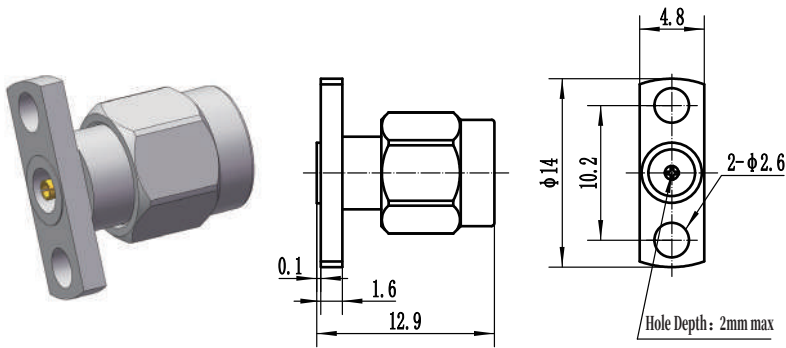
Accepts PIN DIA.	Model No.
Φ0.23mm	2.92-JFD6
Φ0.30mm	2.92-JFD7
Φ0.38mm	2.92-JFD8
Φ0.46mm	2.92-JFD9
Φ0.51mm	2.92-JFD10



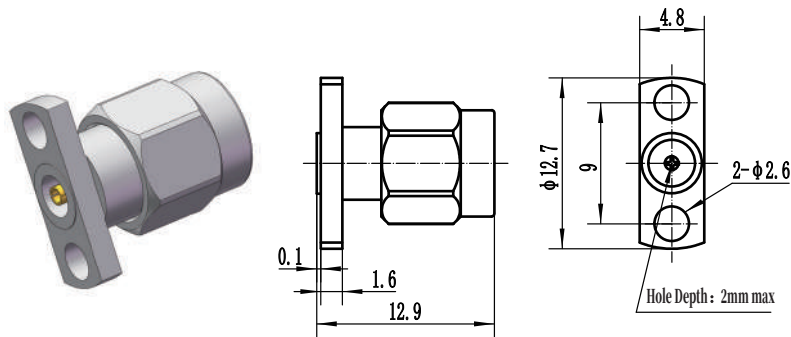
Accepts PIN DIA.	Model No.
Φ0.23mm	2.92-JFD11
Φ0.30mm	2.92-JFD12
Φ0.38mm	2.92-JFD13
Φ0.46mm	2.92-JFD14
Φ0.51mm	2.92-JFD15



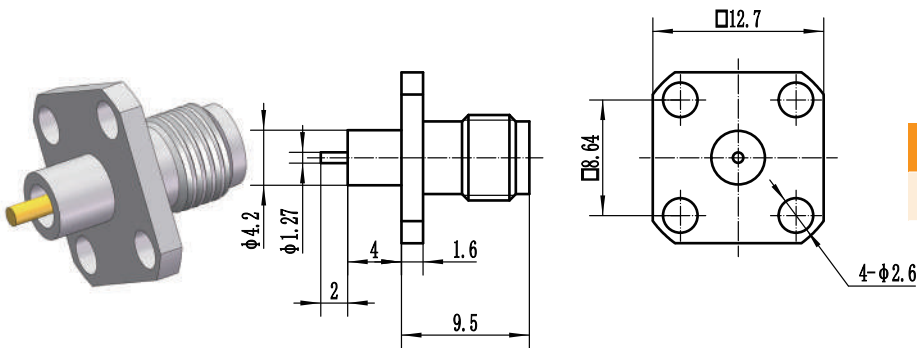
Accepts PIN DIA.	Model No.
Φ0.23mm	2.92-JFD16
Φ0.30mm	2.92-JFD17
Φ0.38mm	2.92-JFD18
Φ0.46mm	2.92-JFD19
Φ0.51mm	2.92-JFD20



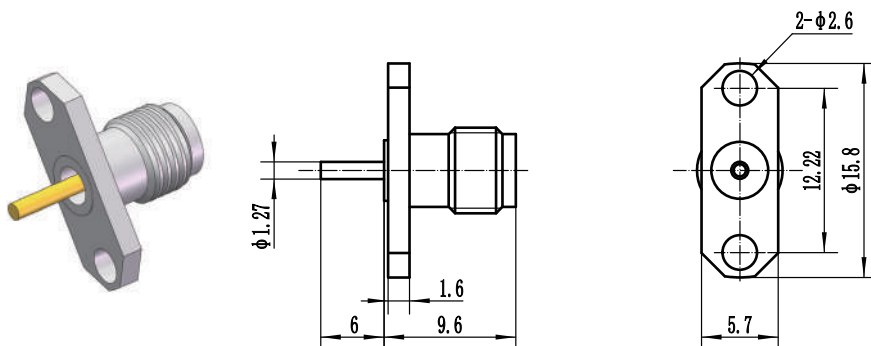
Accepts PIN DIA.	Model No.
Φ0.23mm	2.92-JFD21
Φ0.30mm	2.92-JFD22
Φ0.38mm	2.92-JFD23
Φ0.46mm	2.92-JFD24
Φ0.51mm	2.92-JFD25



Accepts PIN DIA.	Model No.
Φ0.23mm	2.92-JFD26
Φ0.30mm	2.92-JFD27
Φ0.38mm	2.92-JFD28
Φ0.46mm	2.92-JFD29
Φ0.51mm	2.92-JFD30



Model No.
2.92-KFD31



Model No.
2.92-KFD32